



Carters Mead, Harlow, CM17 9EU

GUIDE PRICE £325,000 - £335,000!

Geoffrey Matthew Estates are delighted to offer this very well presented, two bedroom, freehold house in the popular residential area of Carters Mead. Benefitting from driveway parking and a generous and low maintenance, landscaped rear garden, internal the property is decorated to a modern standard with two double bedrooms, the larger of which is currently split to utilise as both a bedroom and office.

Early viewings are very highly recommended!

Price Guide £325,000

Carters Mead, Harlow, CM17 9EU



- Driveway Parking
- Two Bedrooms
- Freehold
- Generous & Landscaped Rear Garden
- Conservatory

Entrance Porch

Hallway

Lounge

20'11 x 9'3 (6.38m x 2.82m)

Kitchen

9'3 x 7'1 (2.82m x 2.16m)

Conservatory

9' x 16'9 (2.74m x 5.11m)

First Floor Landing

Bedroom

11'8 x 9'3 (3.56m x 2.82m)

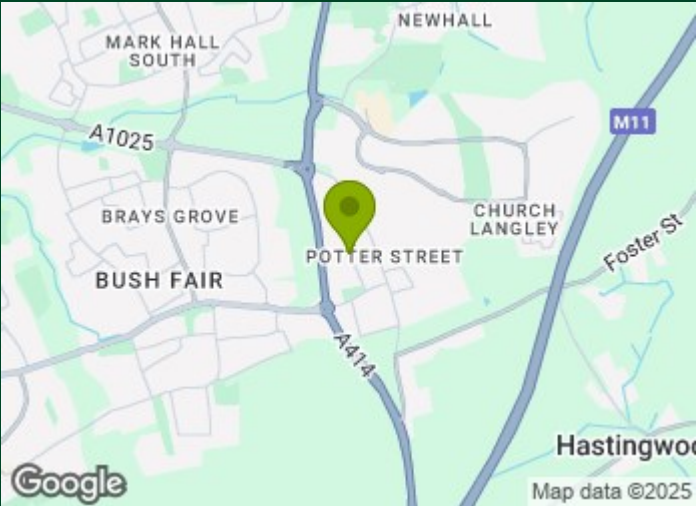
Bedroom/Office

8'9 x 8'3 & 8'9 x 5'6 (2.67m x 2.51m & 2.67m x 1.68m)

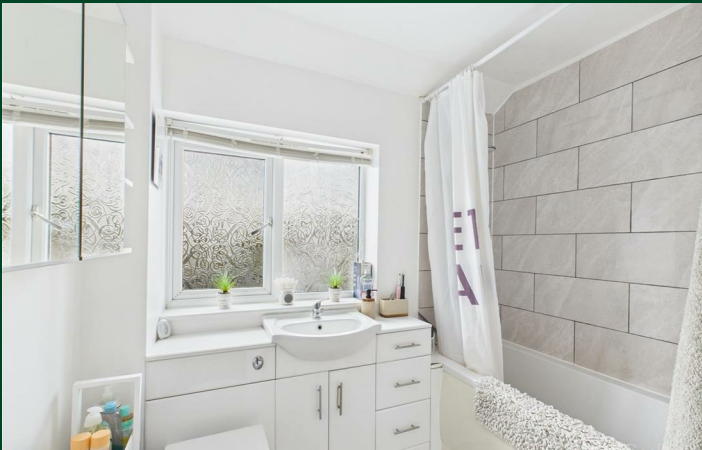
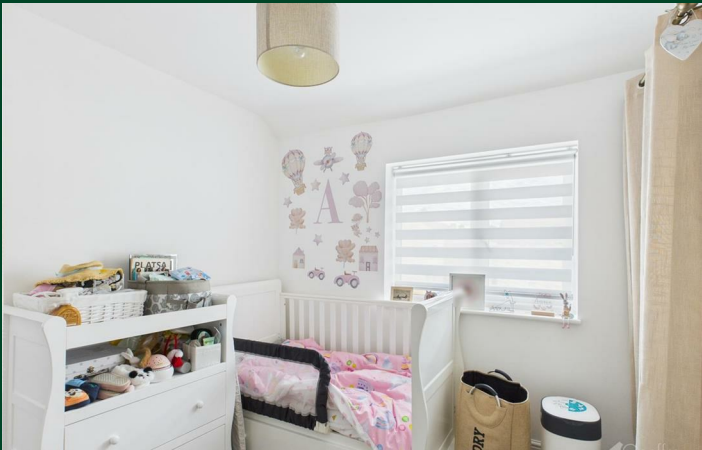
Bathroom

5'6 x 7'7 (1.68m x 2.31m)

Rear Garden



Directions



Floor Plan



Council Tax Details

Harlow Band C

These particulars, whilst believed to be accurate are set out as a general outline only for guidance and do not constitute any part of an offer or contract. Intending purchasers should not rely on them as statements of representation of fact, but must satisfy themselves by inspection or otherwise as to their accuracy. No person in this firms employment has the authority to make or give any representation or warranty in respect of the property.

