



## London Road, Harlow, CM17 9NG

A truly delightful Grade II period cottage set within a lovely courtyard. The property has parking to the front with scope to extend further parking, and a large rear garden. Inside the property enjoys many period features including beams and fireplaces. There are two reception rooms with one currently used as a 3rd bedroom, kitchen diner and downstairs bathroom. On the first floor there are two further double bedrooms and a home office. Being offered with no onward chain and is available for immediate viewing.

Sitting opposite the Potter Street War Memorial and common and ideally located for the M11 (J7) and a short drive to Epping and Harlow Town Centres.

**Asking Price £425,000**

# London Road, Harlow, CM17 9NG

- Grade II Listed Cottage
- Two/Three Bedrooms
- Courtyard Position
- Good Size Garden
- Period Features Throughout
- Two Receptions/ 3rd Bedroom
- No Onward Chain
- Parking

## Accommodation Comprises:

### Hallway

2'11 x 4'3 (0.89m x 1.30m)

### Kitchen

8'9 x 15'5 (2.67m x 4.70m)

### Lounge

15'2 x 10'9 (4.62m x 3.28m)

### Second Reception/Bedroom Three

#### Downstairs Bathroom

8'5 x 6'6 (2.57m x 1.98m)

#### First Floor Landing

6'5 x 7'6 (1.96m x 2.29m)

#### Bedroom One

15'3 x 10'0 (4.65m x 3.05m)

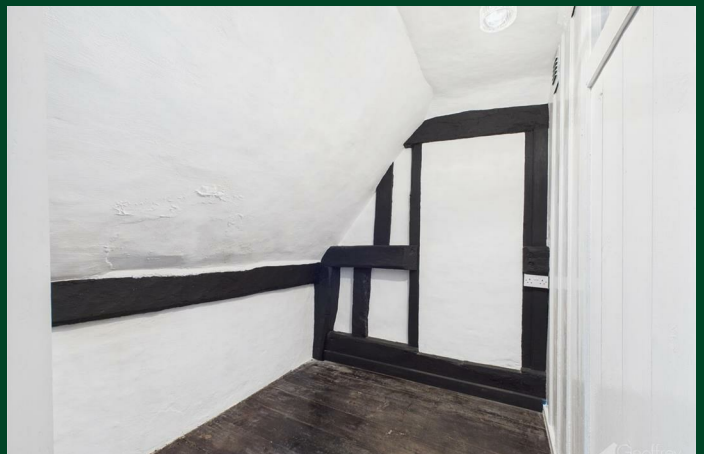
#### Bedroom Two

8'9 x 11'9 (2.67m x 3.58m)

#### Home Office

6'4 x 8'9 (1.93m x 2.67m)





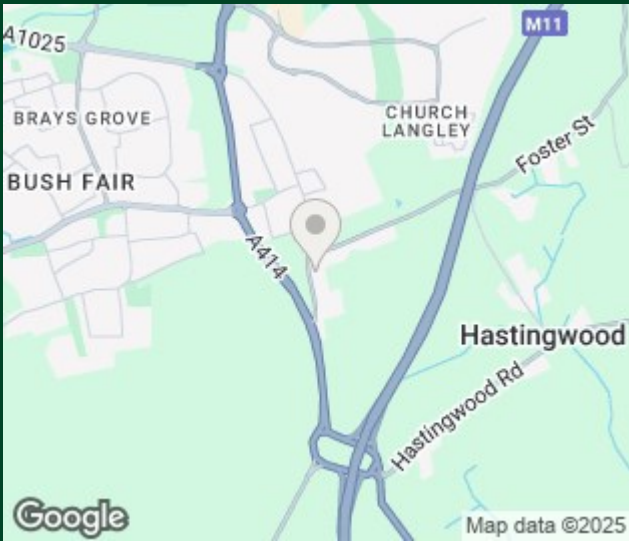








Floor Plan



Council Tax Details

Epping Forest Band: E

These particulars, whilst believed to be accurate are set out as a general outline only for guidance and do not constitute any part of an offer or contract. Intending purchasers should not rely on them as statements of representation of fact, but must satisfy themselves by inspection or otherwise as to their accuracy. No person in this firms employment has the authority to make or give any representation or warranty in respect of the property.

Old Harlow: 01279 444988    Email: [harlow@geoffreymatthew.co.uk](mailto:harlow@geoffreymatthew.co.uk)  
Great Ashby: 01438 740111    Email: [greatashby@geoffreymatthew.co.uk](mailto:greatashby@geoffreymatthew.co.uk)