



The Lawn, Harlow, CM20 2JX

A two-bedroom top floor flat located in The Lawn in the popular parts of Harlow of Mark Hall and being one of the first parts built around green spaces.

The flat itself is approached via an open walkway. Inside it enjoys a large open plan lounge/diner/kitchen, two double bedrooms, and bathroom. It is offered with no onward chain. Keys held for immediate viewing.

£192,500

The Lawn, Harlow, CM20 2JX



- Popular Mark Hall Area
- Open Plan Lounge/Dining Room/Kitchen
- Surrounded by Green Lawns
- Two Double Bedrooms
- Storage Shed
- No Onward Chain

Accommodation Comprises:

Service Charge approx £129 per month

Ground Rent £10 per annum

Hallway

11'5 x 2'11 (3.48m x 0.89m)

Open Plan Kitchen/Lounge/Diner

10'5 x 21'11 (3.18m x 6.68m)

Bedroom One

10'2 x 13'1 (3.10m x 3.99m)

Bedroom Two

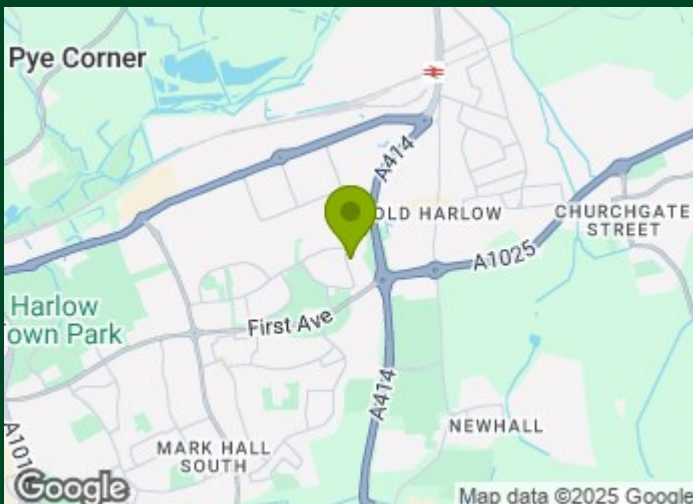
8'7 x 13'0 (2.62m x 3.96m)

Bathroom

7'5 x 4'7 (2.26m x 1.40m)

Agents Note

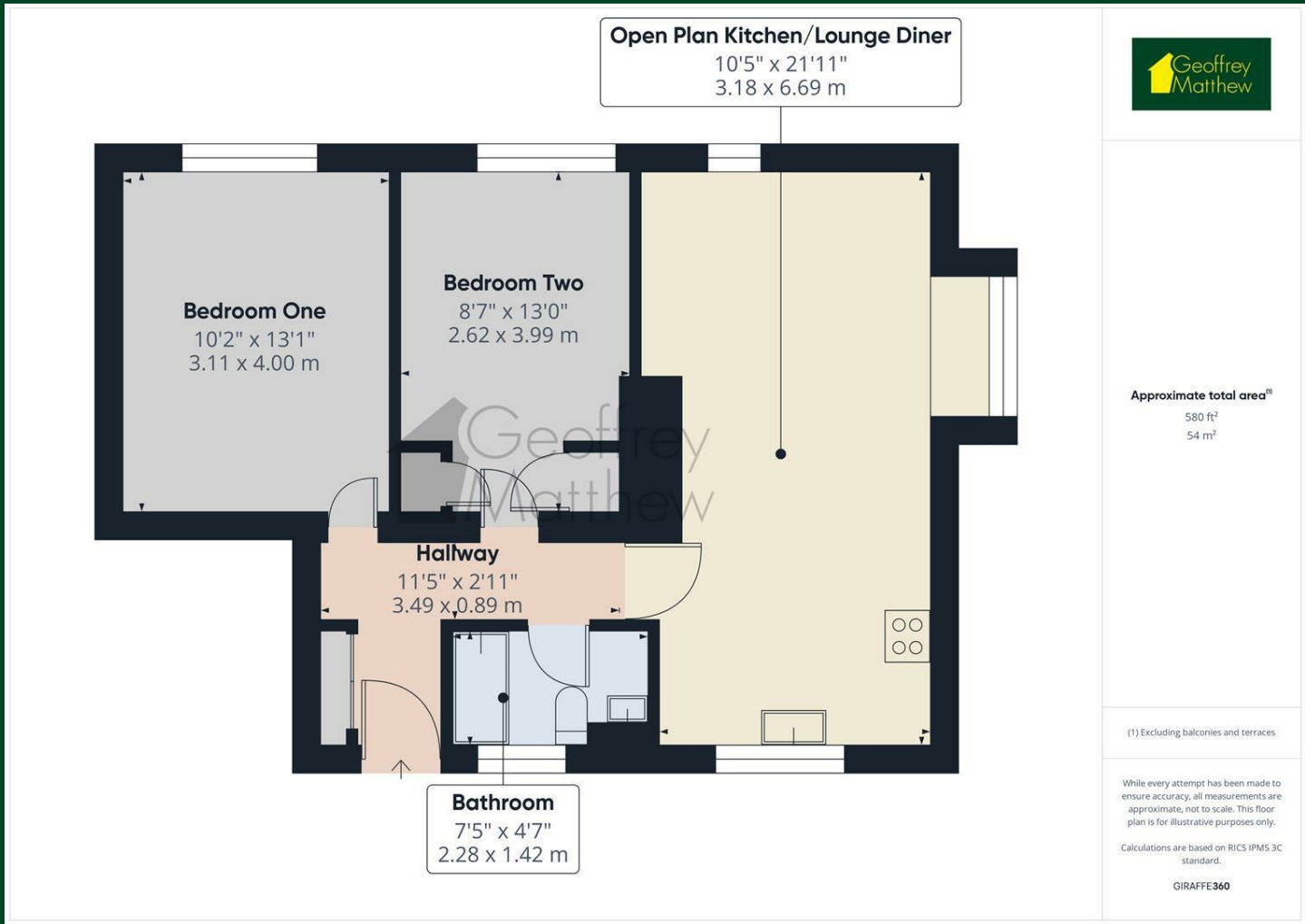
Approx 90 years remaining on lease



Directions



Floor Plan



Council Tax Details

Harlow Council Band B

These particulars, whilst believed to be accurate are set out as a general outline only for guidance and do not constitute any part of an offer or contract. Intending purchasers should not rely on them as statements of representation of fact, but must satisfy themselves by inspection or otherwise as to their accuracy. No person in this firms employment has the authority to make or give any representation or warranty in respect of the property.

