



Ladyshot, Harlow, CM20 3ER

Geoffrey Matthew Property Management are pleased to offer for Let this two bedroom first floor flat with two separate balconies. The property comprises an entrance hall leading to a bright living room with access to one balcony. The fitted kitchen also has access to its own balcony. There are two double bedrooms, one with its own access to the balcony and the other with a built in wardrobe. The property also benefits from a family bathroom and lots of built in storage cupboards.

The property is within easy access to 'The Stow' with local amenities, takeaways and doctors, Harlow Town Centre and Harlow train station.

Available Immediately.

A holding deposit equivalent to one week's rent is payable in order to apply for this property.

£1,400 Per Calendar Month

Ladyshot, Harlow, CM20 3ER

 2

 1

 1

 C

- Two Double Bedrooms
 - Newly redecorated
 - EPC Band Awaiting
- First Floor
 - New Flooring throughout
 - Council Tax Band B
- Two Balconies
 - Available Immediately

Accommodation Comprises:

Entrance Hall

Living Room

17'7 x 11'8 (5.36m x 3.56m)

Kitchen

9'4 x8'9 (2.84m x2.67m)

Bedroom

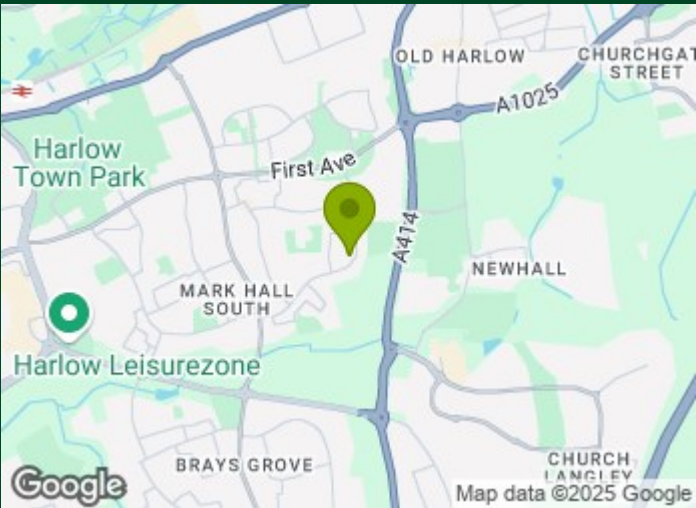
12'8 x 11'8 (3.86m x 3.56m)

Bedroom

11'1 x 10'1 (3.38m x 3.07m)

Bathroom

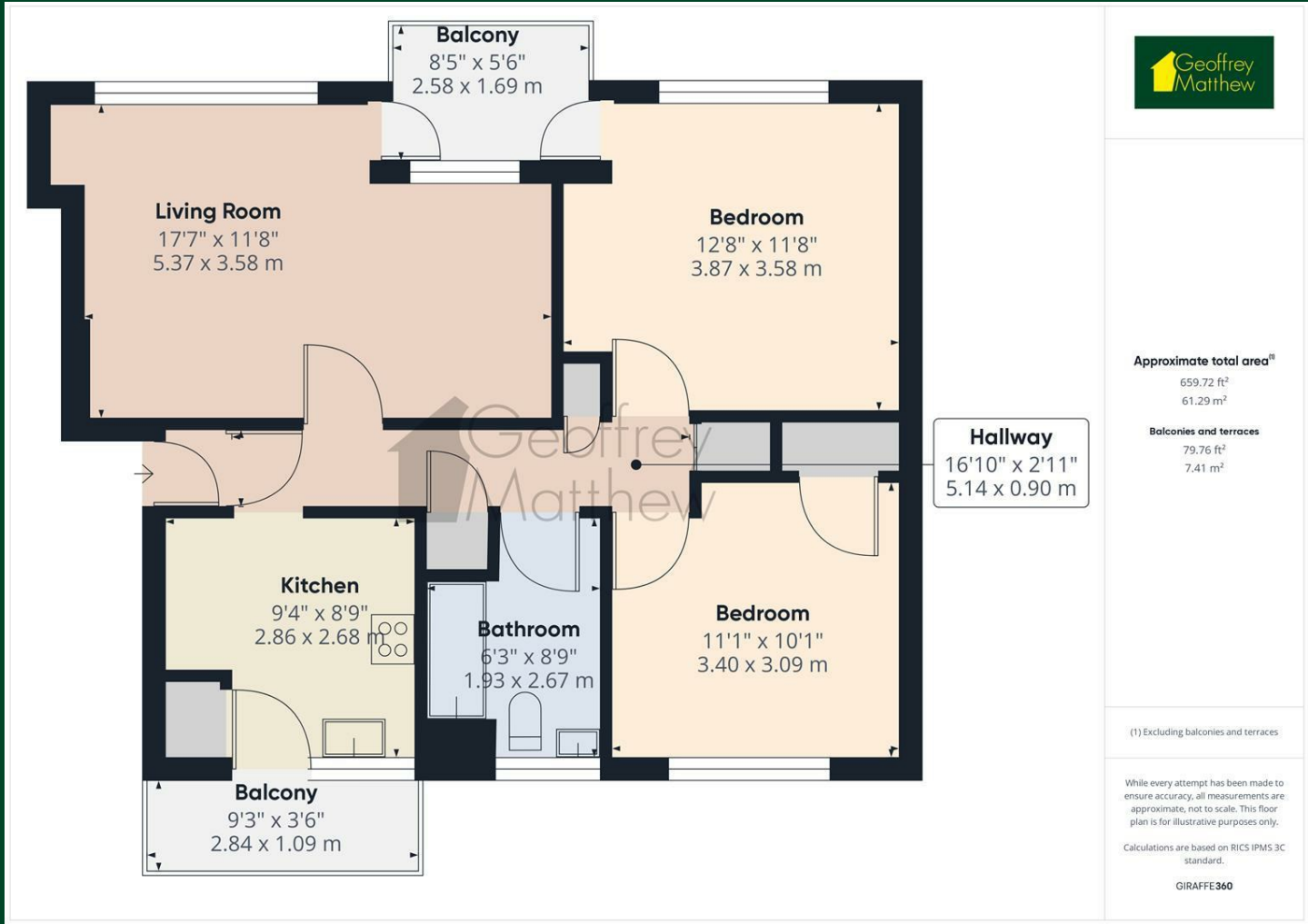
6'3 x 8'9 (1.91m x 2.67m)



Directions



Floor Plan



Council Tax Details

Harlow Band B

These particulars, whilst believed to be accurate are set out as a general outline only for guidance and do not constitute any part of an offer or contract. Intending purchasers should not rely on them as statements of representation of fact, but must satisfy themselves by inspection or otherwise as to their accuracy. No person in this firms employment has the authority to make or give any representation or warranty in respect of the property.

