



Torkildsen Way, Harlow, CM20 1AY

Geoffrey Matthew Estates are delighted to offer this rarely available, five bedroom, freehold, house in the popular residential area of Torkildsen Way. Ideally located for access to Princess Alexandra Hospital, Harlow Town Train station and the Town Centre, the property itself benefits from versatile living accommodation, five bedrooms, two bathrooms, additional ground floor w.c and allocated parking via carport.

Five bedroom properties in this area are a rare opportunity so early viewings are highly recommended!

Offers In The Region Of £475,000

Torkildsen Way, Harlow, CM20 1AY



- Five Bedrooms
- Allocated Parking Via Carport
- Two Bathrooms
- Ideally Located For Princess Alexandra Hospital
- Ground Floor W.C
- Close To Train Station & Town Centre

Hallway

Lounge

11'2 x 17'9 (3.40m x 5.41m)

Ground Floor W.C

Kitchen/Diner

17'10 x 12'11 (5.44m x 3.94m)

First Floor Landing

Bedroom

15'1 x 9'6 (4.60m x 2.90m)

Ensuite

9' x 6'3 (2.74m x 1.91m)

Family Bathroom

8' x 5'7 (2.44m x 1.70m)

Bedroom

7'9 x 8'2 (2.36m x 2.49m)

Bedroom

7'3 x 9'4 (2.21m x 2.84m)

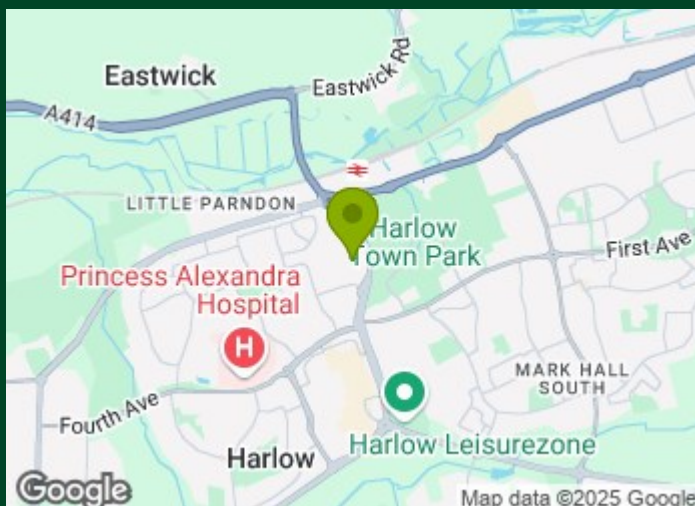
Second Floor Landing

Bedroom

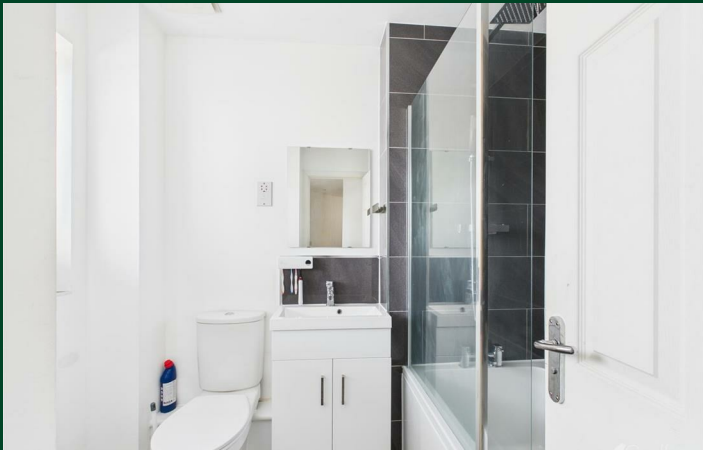
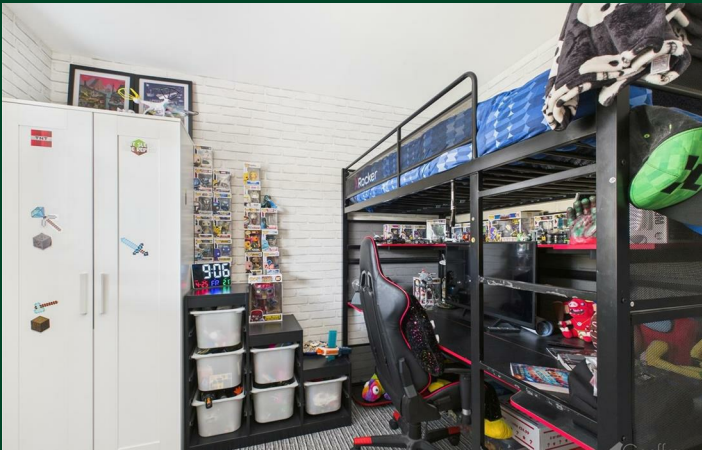
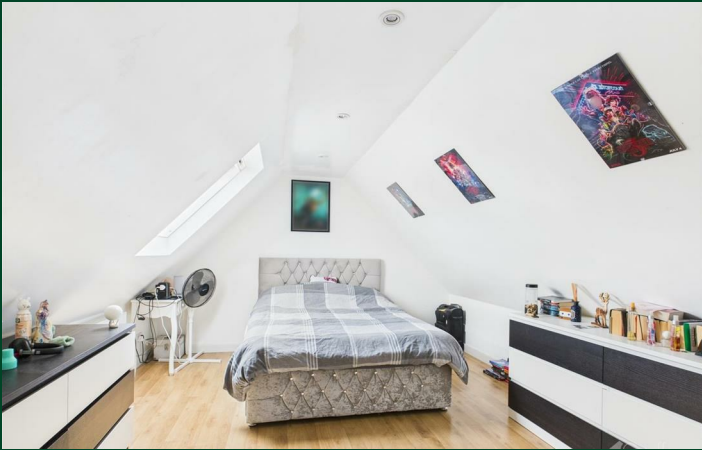
20'5 x 12' (6.22m x 3.66m)

Bedroom

9'4 x 12'1 (2.84m x 3.68m)



Directions



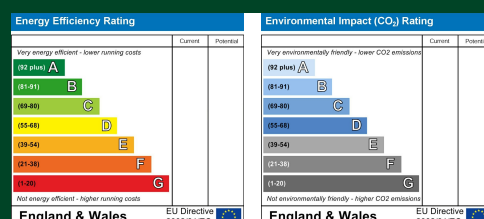
Floor Plan



Council Tax Details

Harlow Band E

These particulars, whilst believed to be accurate are set out as a general outline only for guidance and do not constitute any part of an offer or contract. Intending purchasers should not rely on them as statements of representation of fact, but must satisfy themselves by inspection or otherwise as to their accuracy. No person in this firm's employment has the authority to make or give any representation or warranty in respect of the property.



Old Harlow: 01279 444988 Email: harlow@geoffreymatthew.co.uk
Great Ashby: 01438 740111 Email: greatashby@geoffreymatthew.co.uk