



Elmbridge, Harlow, CM17 0JU

GUIDE PRICE £514,500 - £525,000!

Geoffrey Matthew Estates are delighted to offer this CHAIN FREE three bedroom, link detached, family home in the highly sought after location of Elmbridge in Churchgate St Village. Enjoying both a garage and spacious driveway for multiple vehicles, the property also benefits from features including ground floor w.c. A very popular residential cul-de-sac, close to schools, amenities and transport links in an historic village location.

Early viewings are highly recommended!

Price Range £514,500

Elmbridge, Harlow, CM17 0JU

 3

 1

 2

 D

- CHAIN FREE
 - Garage
 - Sought After Location
- Three Bedrooms
 - Spacious Driveway For Multiple Cars
 - Early Viewings Highly Recommended!
- Link Detached
 - Ground Floor W.C

Accommodation Comprises:

Entrance Porch

Hallway

Living Room

16'7 x 11'9 (5.05m x 3.58m)

Dining Room

10'10 x 8'11 (3.30m x 2.72m)

Sunroom

10'8 x 8'8 (3.25m x 2.64m)

Kitchen

10'10 x 9'9 (3.30m x 2.97m)

Utility Room

6'9 x 8'9 (2.06m x 2.67m)

Garage

16'3 x 9'2 (4.95m x 2.79m)

Landing

Bedroom

13'1 x 11'5 (3.99m x 3.48m)

Bedroom

11'5 x 13' (3.48m x 3.96m)

Bedroom

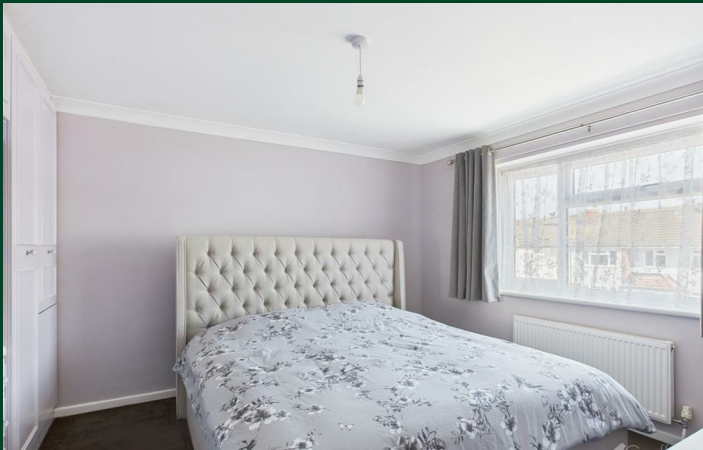
7'10 x 7'6 (2.39m x 2.29m)

Bathroom

5'5 x 8'2 (1.65m x 2.49m)



Directions



Floor Plan



Council Tax Details

Harlow Band F

These particulars, whilst believed to be accurate are set out as a general outline only for guidance and do not constitute any part of an offer or contract. Intending purchasers should not rely on them as statements of representation of fact, but must satisfy themselves by inspection or otherwise as to their accuracy. No person in this firms employment has the authority to make or give any representation or warranty in respect of the property.

