

## Bush End, Takeley, Bishop's Stortford, CM22 6NE

A stunning four-bedroom detached family home located on the edge of Hatfield Forest offering beautifully presented spacious accommodation. This superb home is situated behind a gated entrance and offers a large kitchen/Breakfast room with Granite work tops, dining room with doors to garden, large lounge, utility room, snug/office and cloakroom. On the first floor there are four double bedrooms, bathroom and En-suite shower room. The property has a landscaped rear garden and large secure driveway. Bush End is situated just a short drive from the larger town of Bishop's Stortford with mainline railway station and excellent shops.

£685,000

# Bush End, Takeley, Bishop's Stortford, CM22 6NE



- Stunning Throughout
- Two Bathrooms
- Detached
- Four Bedrooms
- Secure Gated Access
- Family Home
- Three Reception Rooms
- Close To Forest

## Entrance Hall

19'8" x 4'0"

## Kitchen/Breakfast Room

22'8" x 11'8" (6.91m x 3.56m)

## Dining Room

14'0" x 10'2" (4.27m x 3.10m)

## Lounge

15'8" x 14'0" (4.78m x 4.27m)

## Utility Room

9'3" x 7'4" (2.82m x 2.24m)

## Snug

11'3" x 9'4" (3.43m x 2.84m)

## Cloakroom

8'10" x 3'4"

## Principal Bedroom

11'5" x 11'6" (3.48m x 3.51m)

## Bedroom Two

15'3" x 8'9" (4.65m x 2.67m)

## Bedroom Three

12'5" x 11'5" (3.78m x 3.48m)

## Bedroom Four

14'0" x 8'7" (4.27m x 2.62m)

## Bathroom

Family Bathroom

## En-Suite

Shower Room

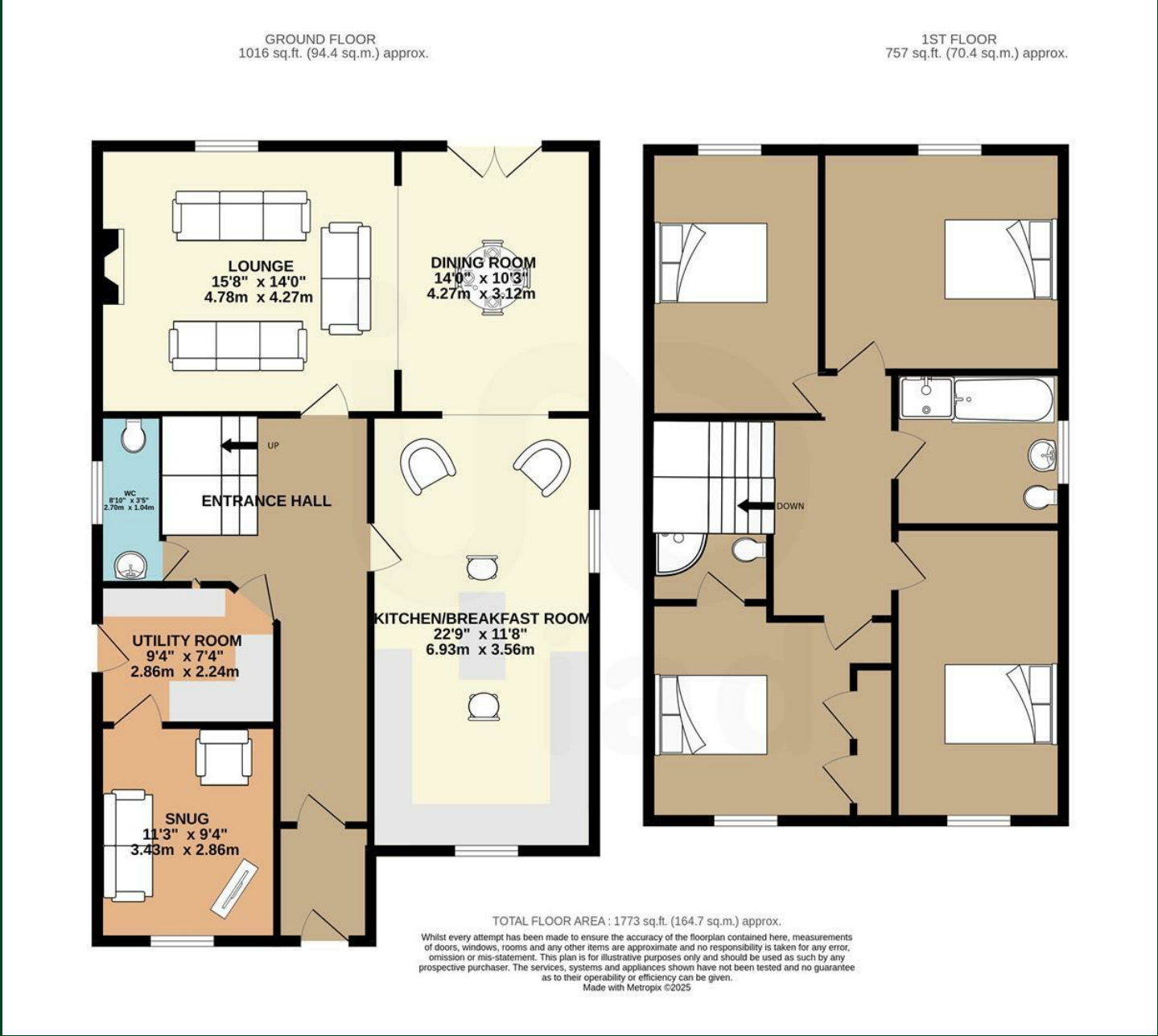


## Directions





Floor Plan



Council Tax Details

Band

These particulars, whilst believed to be accurate are set out as a general outline only for guidance and do not constitute any part of an offer or contract. Intending purchasers should not rely on them as statements of representation of fact, but must satisfy themselves by inspection or otherwise as to their accuracy. No person in this firms employment has the authority to make or give any representation or warranty in respect of the property.

