



Kingsbridge Road, Bishop's Stortford, CM23 2AE

We are delighted to offer for sale, this immaculate, refurbished Two-Bedroom Semi Detached bungalow located within walking distance of the town centre and mainline station. This beautiful home offers generous accommodation that includes a large open plan kitchen, living, dining space with doors to the rear garden, two double bedrooms and a refitted bathroom. The property has the added benefit of a garage converted into a workspace/home office. There is off road parking for at least three cars and good size enclosed rear garden.

Price Guide £475,000

Kingsbridge Road, Bishop's Stortford, CM23 2AE

- Refurbished Bungalow
- Walk To Station
- Gas central Heating
- Two Bedrooms
- Fitted Kitchen
- Workshop/Home Office

Entrance Hall

3'2 x 2'9 (0.97m x 0.84m)

Open Plan Kitchen/Living Area

20'9 x 14'1 (6.32m x 4.29m)

Dining Room

15'8 x 8'7 (4.78m x 2.62m)

Inner Hall

6'8 x 3'1 (2.03m x 0.94m)

Master Bedroom

12'2 x 10'2 (3.71m x 3.10m)

Bedroom Two

8'10 x 8'8 (2.69m x 2.64m)

Bathroom

6'3 x 5'4 (1.91m x 1.63m)

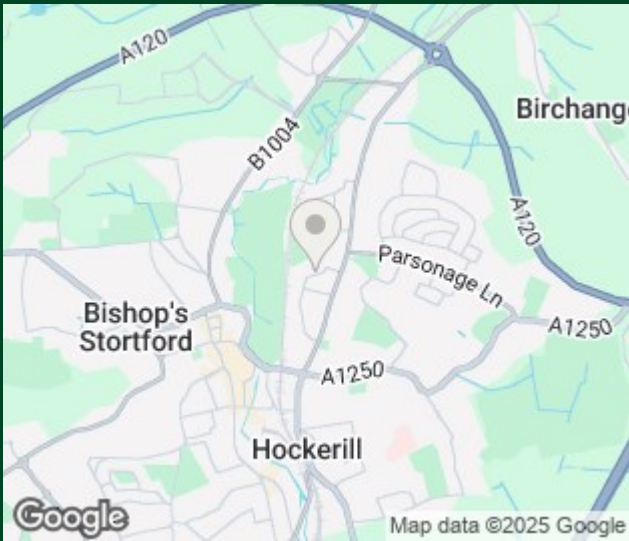
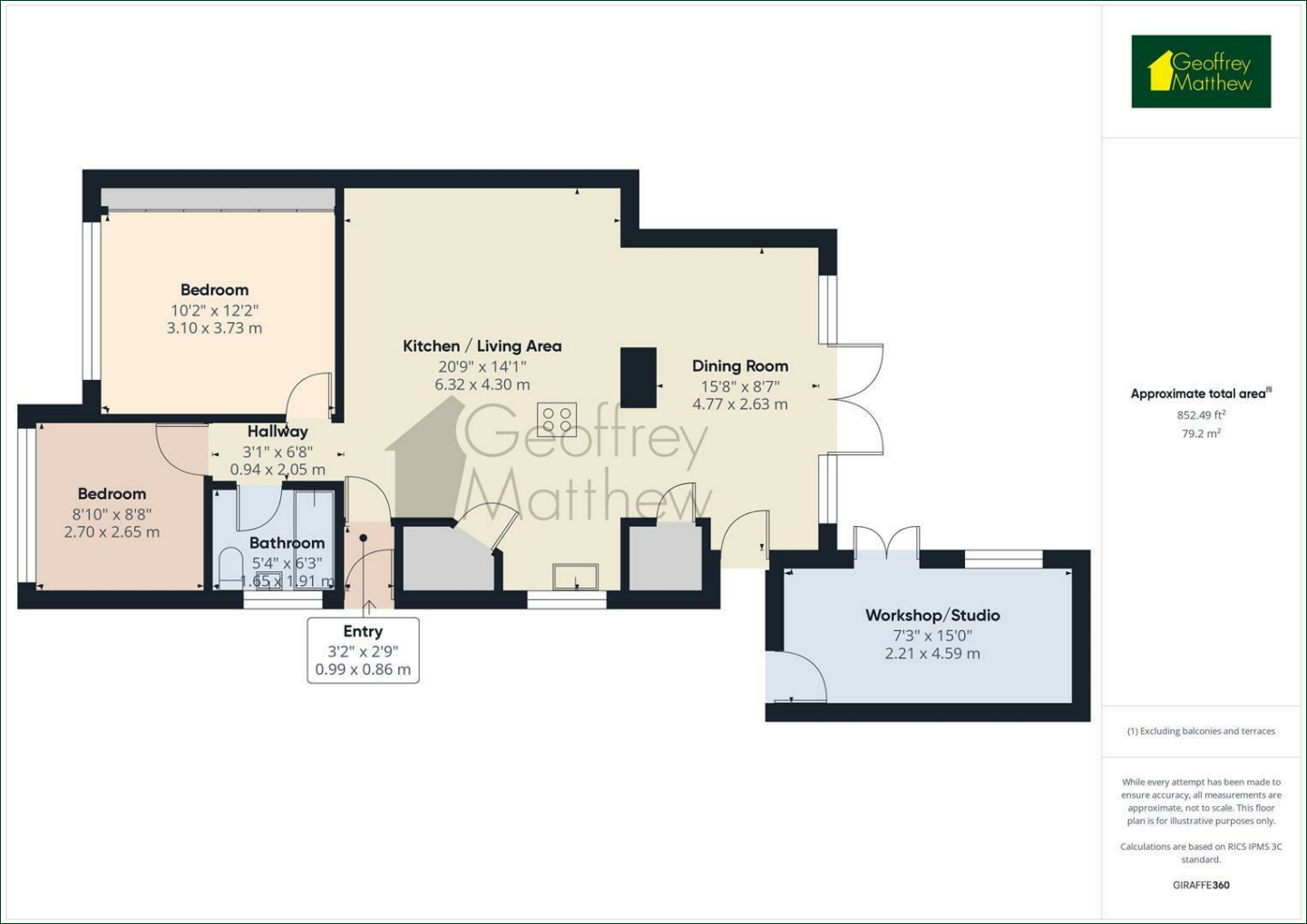
Workshop/Studio

15' x 7'3 (4.57m x 2.21m)



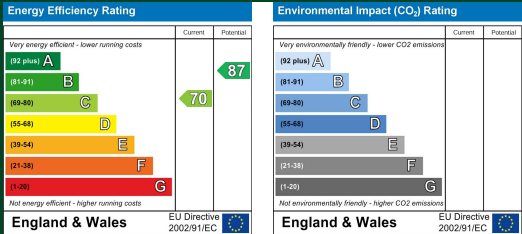


Floor Plan



Council Tax Details

East Herts Band: D



These particulars, whilst believed to be accurate are set out as a general outline only for guidance and do not constitute any part of an offer or contract. Intending purchasers should not rely on them as statements of representation of fact, but must satisfy themselves by inspection or otherwise as to their accuracy. No person in this firms employment has the authority to make or give any representation or warranty in respect of the property.

Old Harlow: 01279 444988 Email: harlow@geoffreymatthew.co.uk
Great Ashby: 01438 740111 Email: greatashby@geoffreymatthew.co.uk