



St. Andrews Meadow, Harlow, CM18 6BL

Geoffrey Matthew Estates are delighted to offer this three bedroom, end of terrace, freehold house in the popular residential location of St Andrews Meadow. In need of a degree of modernisation throughout, the property is being offered on a CHAIN FREE basis and benefits from one allocated parking bay and has SCOPE TO EXTEND AND CONVERT LOFT (subject to planning)

Early viewings are highly recommended!

Guide Price £350,000

St. Andrews Meadow, Harlow, CM18 6BL



- Three Bedrooms
- End Of Terrace
- Freehold
- Allocated Parking Bay
- CHAIN FREE
- Ground Floor W.C
- SCOPE TO EXTEND AND CONVERT LOFT (subject to planning)

Accommodation Comprises:

Entrance Hall

Bedroom
6'11 x 10'1 (2.11m x 3.07m)

Ground Floor W.C

Bedroom
8'6 x 6'10 (2.59m x 2.08m)

Kitchen
8'10 x 13'2 (2.69m x 4.01m)

Bathroom
6'5 x 8'10 (1.96m x 2.69m)

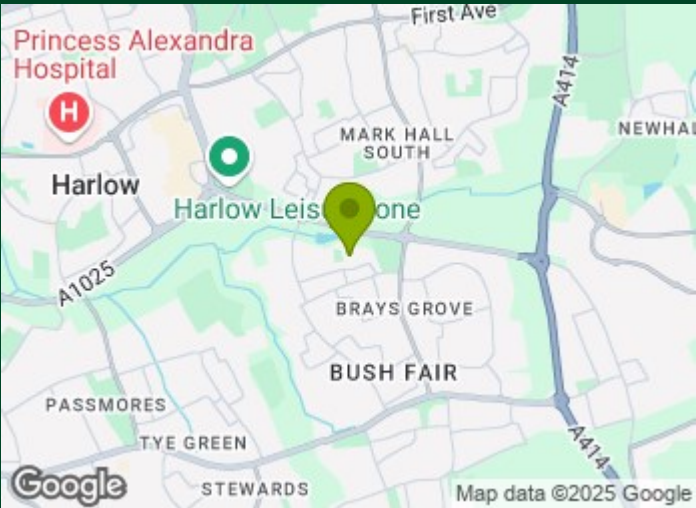
Living Room
15'8 x 10' (4.78m x 3.05m)

Rear Garden

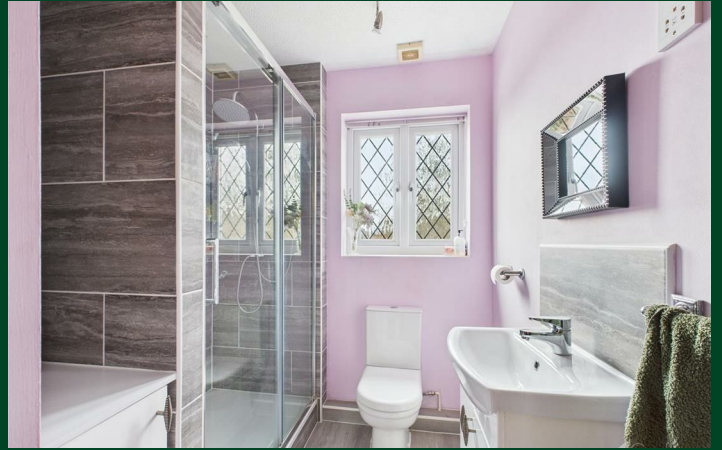
Conservatory
12'10 x 8'1 (3.91m x 2.46m)

First Floor Landing

Bedroom
9'1 x 13'4 (2.77m x 4.06m)



Directions



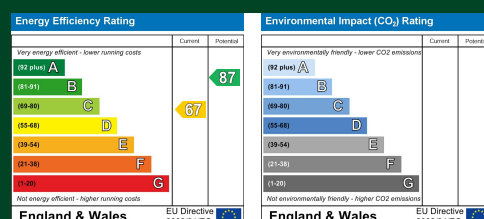
Floor Plan



Council Tax Details

Harlow Band D

These particulars, whilst believed to be accurate are set out as a general outline only for guidance and do not constitute any part of an offer or contract. Intending purchasers should not rely on them as statements of representation of fact, but must satisfy themselves by inspection or otherwise as to their accuracy. No person in this firm's employment has the authority to make or give any representation or warranty in respect of the property.



Old Harlow: 01279 444988 Email: harlow@geoffreymatthew.co.uk
Great Ashby: 01438 740111 Email: greatashby@geoffreymatthew.co.uk