



## Westfield, Harlow, CM18 6AP

Geoffrey Matthew Estates are delighted to offer for sale this three bedroom, end of terrace, freehold family home located in the popular residential area of Westfield. Sitting on a generous corner plot and being offered CHAIN FREE, early viewings are highly recommended!

Offers In The Region Of £375,000

# Westfield, Harlow, CM18 6AP



- CHAIN FREE
- Freehold
- Corner Plot
- On Road Parking Only!
- Three Bedrooms

## Accommodation Comprises:

### Bedroom

7'10 x 8'11 (2.39m x 2.72m)

### Entrance Hallway

### Bathroom

5'5 x 5'11 (1.65m x 1.80m)

### Lounge

10'11 x 19'4 (3.33m x 5.89m)

### W.C

5'7 x 2'7 (1.70m x 0.79m)

### Kitchen

12'7 x 11' (3.84m x 3.35m)

### Utility Room

6'7 x 8'2 (2.01m x 2.49m)

### First Floor Landing

### Bedroom

10'11 x 10'2 (3.33m x 3.10m)

### Bedroom

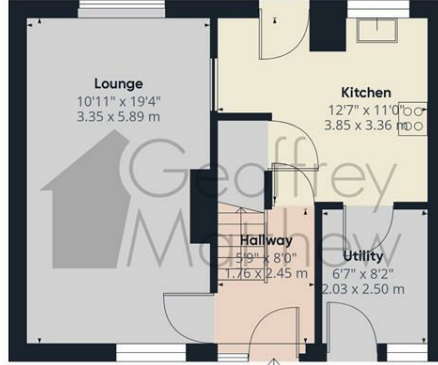
9'7 x 13'3 (2.92m x 4.04m)



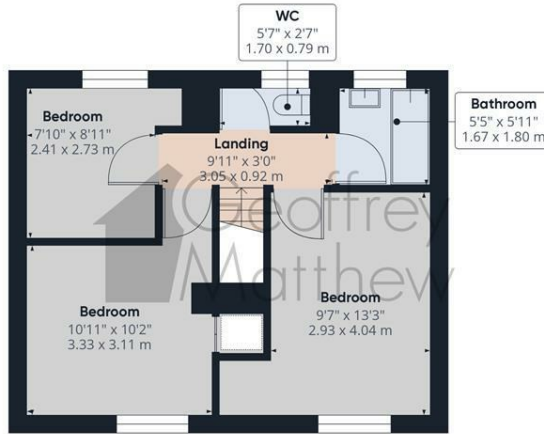
## Directions



# Floor Plan



Floor 0



Floor 1



Approximate total area<sup>®</sup>  
868.86 ft<sup>2</sup>  
80.72 m<sup>2</sup>

(1) Excluding balconies and terraces

While every attempt has been made to ensure accuracy, all measurements are approximate, not to scale. This floor plan is for illustrative purposes only.

Calculations are based on RICS IPMS 3C standard.

GIRAFFE360

## Council Tax Details

Harlow Council Band C

These particulars, whilst believed to be accurate are set out as a general outline only for guidance and do not constitute any part of an offer or contract. Intending purchasers should not rely on them as statements of representation of fact, but must satisfy themselves by inspection or otherwise as to their accuracy. No person in this firm's employment has the authority to make or give any representation or warranty in respect of the property.

