



Elm Court, Commons Road, Harlow, CM18 7JU

Geoffrey Matthew Estates are delighted to offer this two bedroom top floor property benefitting from gas central heating and double glazed windows. There is an entrance hall leading to the lounge, a master bedroom with en-suite shower room, a second bedroom and a family bathroom with a white three piece suite. The kitchen is open plan to the lounge which features built-in oven, hob and extractor. Other features include a secure intercom phone system and private parking.

Elm Court is located within walking distance to three primary schools and a secondary school. There are regular bus routes going past Elm Court which then lead into Harlow Town centre. The mainline train station is around a 10 minute drive away. Currently tenanted, this would make an ideal first time buy or investment purchase.

Guide Price £210,000

Elm Court, Commons Road, Harlow, CM18 7JU



- Two Bedrooms
- Allocated Parking
- Ideal Investment or First Time Purchase
- Gas Central Heating
- En Suite
- Popular Modern Development
- Double Glazed Windows
- CHAIN FREE - Currently Tenanted
- Top Floor

The Accommodation Comprises:

Kitchen

9'3x7'0 (2.82mx2.13m)

Entrance Hallway

15'0x3'6 (4.57mx1.07m)

Agents Note

Lease - 108

- Annual Ground Rent
£400 PA

Bedroom One

10'7x9'10 (3.23mx3.00m)

- Annual Service charges
£1000 PA

En-Suite

3'2x7'0 (0.97mx2.13m)

Bedroom Two

10'5x7'1 (3.18mx2.16m)

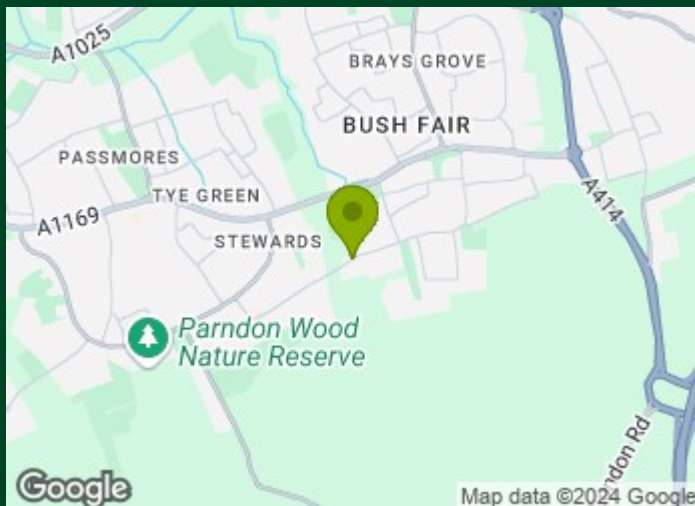
Photos taken prior to current tenancy

Bathroom

7'1x6'3 (2.16mx1.91m)

Lounge/Diner

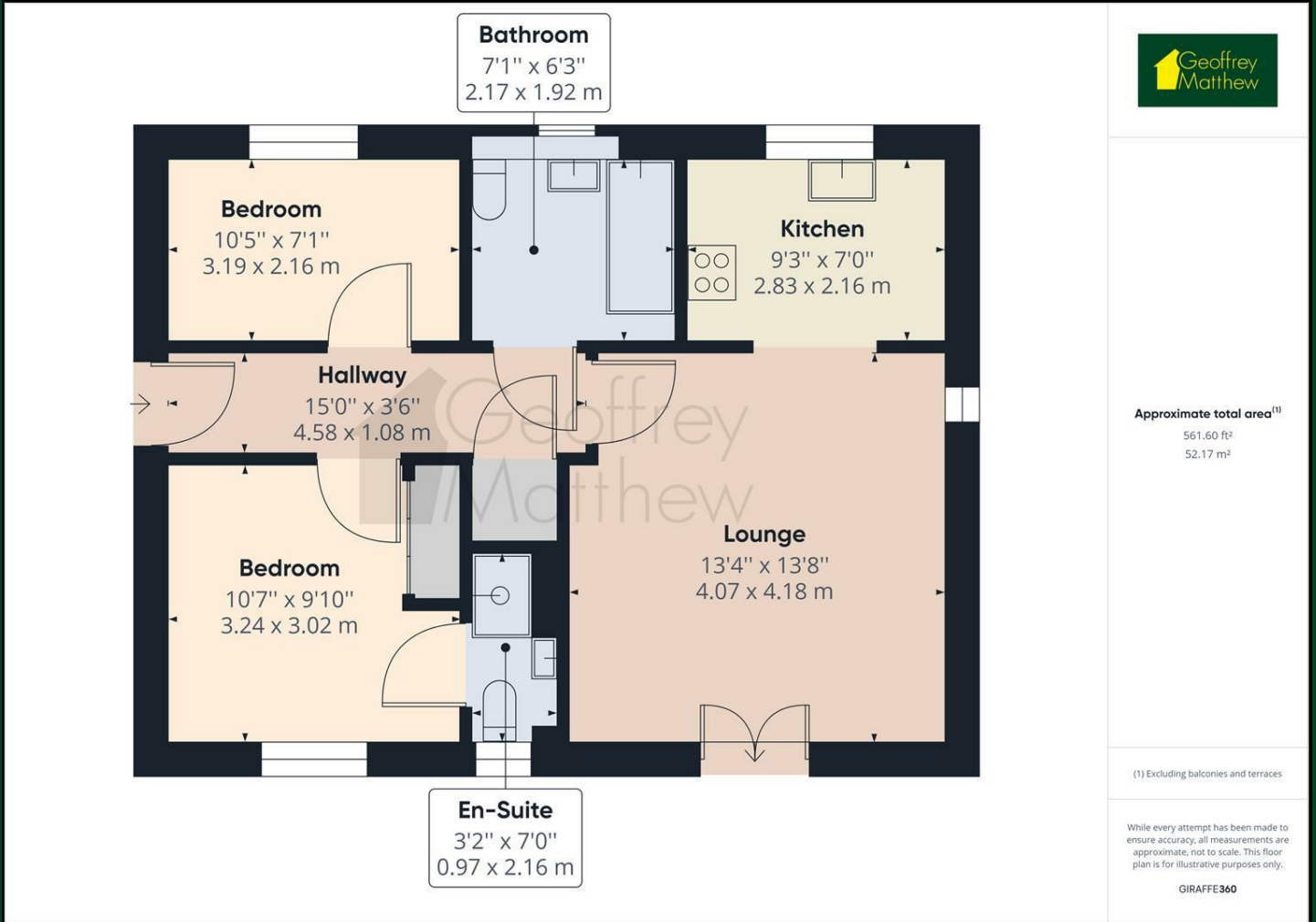
13'4x13'8 (4.06mx4.17m)



Directions



Floor Plan



Council Tax Details

Band C

These particulars, whilst believed to be accurate are set out as a general outline only for guidance and do not constitute any part of an offer or contract. Intending purchasers should not rely on them as statements of representation of fact, but must satisfy themselves by inspection or otherwise as to their accuracy. No person in this firm's employment has the authority to make or give any representation or warranty in respect of the property.

