



## Edinburgh Gate, Harlow, CM20 2UH

Virtual Tour Available-

Geoffrey Matthew Property Management are delighted to offer this unfurnished One bedroom apartment (on the second floor) in the new Edinburgh Way Development. This property is finished to a very high standard throughout. The internal living space comprises of an entrance hall leading to the open plan kitchen/living space with a door leading to a private balcony allowing for plenty of natural light to enter the apartment. The integral appliances in the kitchen include dishwasher and washer/drier. The double bedroom contains floor-to-ceiling window and fitted wardrobe.

EPC Band B. Council tax band C

Viewing is highly recommended.

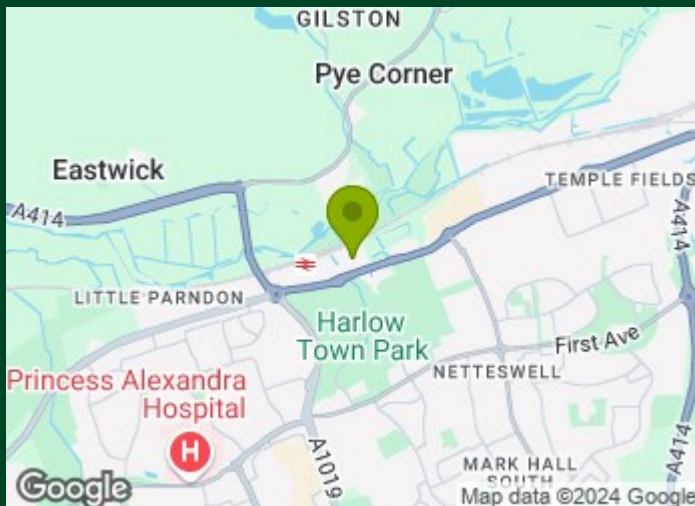
A Holding deposit equivalent to one weeks rent is payable to apply for this property.

**£1,400 Per Calendar Month**

## Edinburgh Gate, Harlow, CM20 2UH



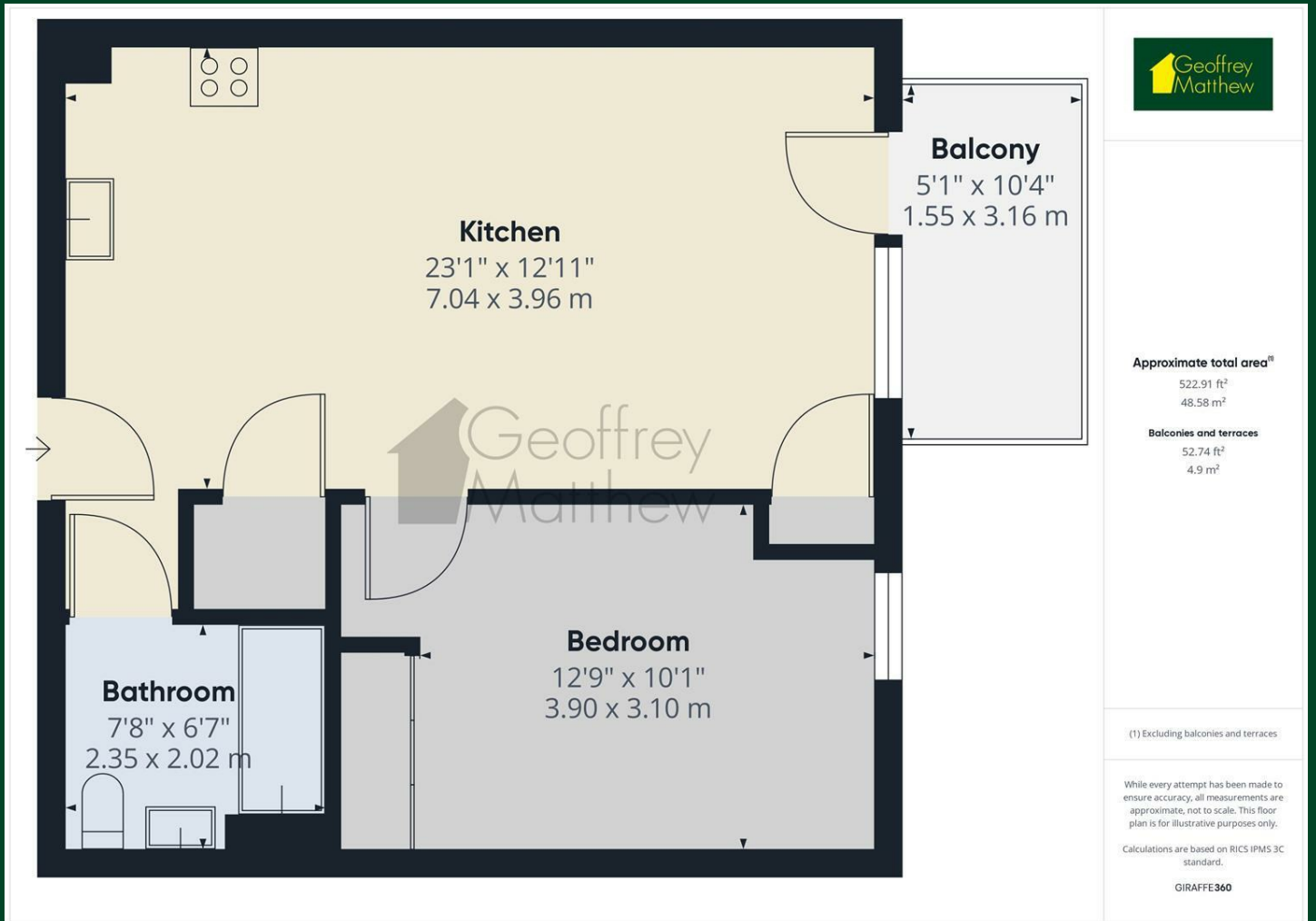
- Brand New Apartment
- Bus/Rail links to London/Stansted/Hertfordshire
- Open Plan Kitchen/Living Room
- One Double Bedroom
- Integrated Zanussi Appliances
- Council Tax Band C
- Close to Harlow Town Station
- Smart Taps in both kitchen and bathroom
- EPC Band B



[Directions](#)



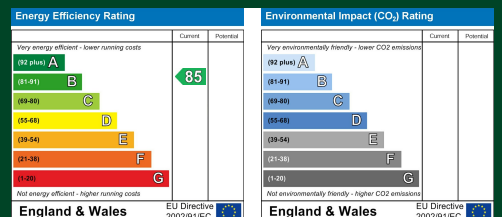
# Floor Plan



## Council Tax Details

Harlow Band C

These particulars, whilst believed to be accurate are set out as a general outline only for guidance and do not constitute any part of an offer or contract. Intending purchasers should not rely on them as statements of representation of fact, but must satisfy themselves by inspection or otherwise as to their accuracy. No person in this firm's employment has the authority to make or give any representation or warranty in respect of the property.



Old Harlow: 01279 444988 Email: harlow@geoffreymatthew.co.uk  
Great Ashby: 01438 740111 Email: greatashby@geoffreymatthew.co.uk