

Magdalen Green, Thaxted, CM6 2LJ

Geoffrey Matthew Estates are pleased to offer for Let this four bedroom bungalow. The property location offers village living in Thaxted. The location offering road access to M11, with junction 8 close by & the M25. Modern spacious fitted kitchen / living room, family bathroom and four double bedrooms. Garage and allocated parking. Enclosed rear garden.

Property is available September and internal viewing is highly recommended.

A holding deposit equivalent to one week's rent is payable in order to apply for this property.

£1,750

Magdalen Green, Thaxted, CM6 2LJ



- Finished to a High Standard
- 4 Double Bedrooms
- Garage and Parking
- EPC Band D
- Council Tax Band C
- Available September



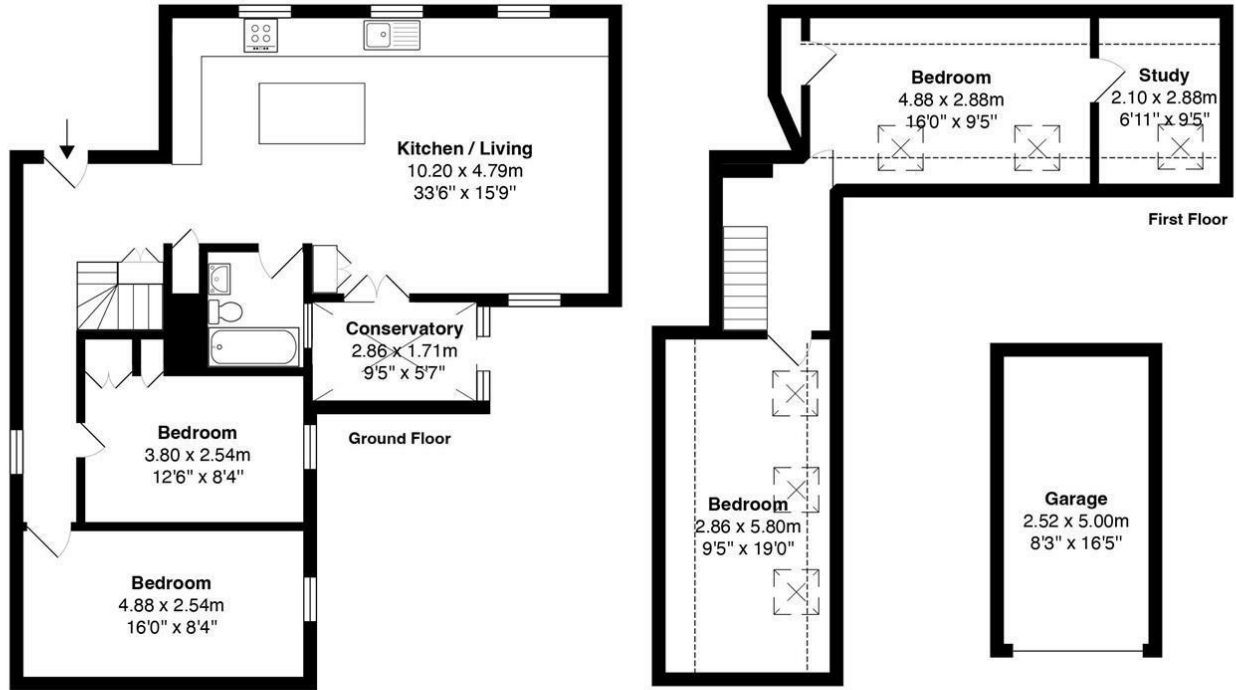
[Directions](#)



Floor Plan

Cornavon, Magdalene Green, Thaxted

Total Area: 123.1 m² ... 1325 ft² (excluding garage)



All measurements are approximate and for display purposes only

Council Tax Details

Band C

These particulars, whilst believed to be accurate are set out as a general outline only for guidance and do not constitute any part of an offer or contract. Intending purchasers should not rely on them as statements of representation of fact, but must satisfy themselves by inspection or otherwise as to their accuracy. No person in this firm's employment has the authority to make or give any representation or warranty in respect of the property.

