



Altham Grove, Harlow, CM20 2PN

GUIDE PRICE: £400,000 to £425,000.

A four-bedroom detached family home located in this extremely popular area of Altham Grove. The house backs onto Burnt Mill School playing fields. Altham Grove itself is situated next to Harlow Town Park. The property is quietly tucked away off a pedestrian square. This does however mean it has no vehicular access, so parking is on the nearby streets. The large garden wraps completely around the property. The property itself enjoys two reception rooms a fitted kitchen, downstairs WC. utility room, four good sized bedrooms on the first floor and a family bathroom.

Guide Price £400,000

Altham Grove, Harlow, CM20 2PN



- Detached Four Bedroom Home
- Next to Harlow Town Park & Short Walk to Harlow Train Station & Town Centre
- Utility Room
- Strictly On Street Parking
- Large Wraparound Garden
- Two Reception Rooms
- Four Good Sized Bedrooms
- Backs onto School Playing Field
- Downstairs WC
- Family Bathroom

Accommodation Comprises:

Hallway

15'11 x 3'0 (4.85m x 0.91m)

Dining Room

10'5 x 9'4 (3.18m x 2.84m)

Living Room

16'5 x 12'2 (5.00m x 3.71m)

Kitchen

9'7 x 10'3 (2.92m x 3.12m)

Utility Room

6'11 x 5'11 (2.11m x 1.80m)

Downstairs WC

2'5 x 5'11 (0.74m x 1.80m)

First Floor Landing

8'6 x 7'7 (2.59m x 2.31m)

Bedroom One

12'3 x 8'1 (3.73m x 2.46m)

Bedroom Two

11'4 x 11'1 (3.45m x 3.38m)

Bedroom Three

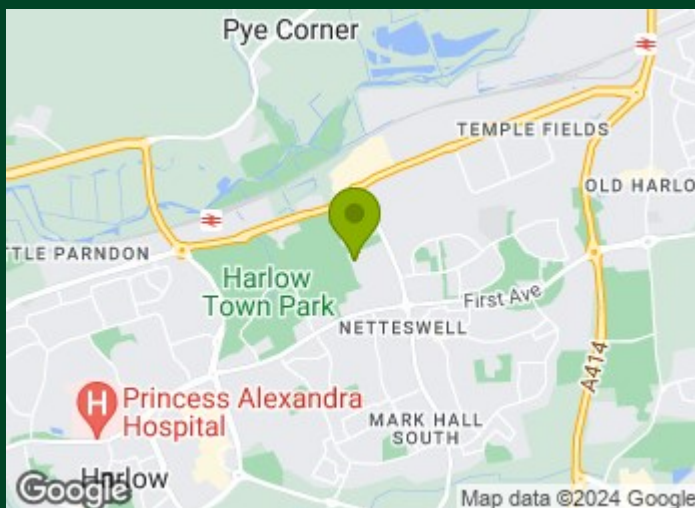
10'7 x 10'7 (3.23m x 3.23m)

Bedroom Four/Office

9'11 x 7'1 (3.02m x 2.16m)

Bathroom

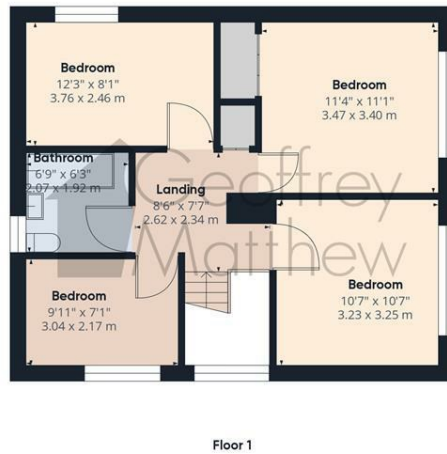
6'9 x 6'9 (2.06m x 2.06m)



Directions



Floor Plan



Approximate total area⁽¹⁾
1094.02 ft²
101.64 m²

(1) Excluding balconies and terraces

While every attempt has been made to ensure accuracy, all measurements are approximate, not to scale. This floor plan is for illustrative purposes only.

GIRAFFE360

Council Tax Details

Harlow Band E

These particulars, whilst believed to be accurate are set out as a general outline only for guidance and do not constitute any part of an offer or contract. Intending purchasers should not rely on them as statements of representation of fact, but must satisfy themselves by inspection or otherwise as to their accuracy. No person in this firm's employment has the authority to make or give any representation or warranty in respect of the property.

