



Mansfield, High Wych, CM21 0JT

Geoffrey Matthew Estates are delighted to offer this rarely available, three bedroom, semi detached house in the popular residential area of Mansfield in the sought after village of High Wych. Sat on a sizeable corner plot, the property itself is in need of modernisation and refurbishment but offers ample scope to extend and renovate (subject to planning) and also benefits from off street parking to the front aspect.

This property is certain to prove popular so early viewings are highly recommended!

Offers In The Region Of £495,000

Mansfield, High Wych, CM21 0JT

- Three Bedrooms
- Off Street Parking
- In Need Of Renovation
- Semi-Detached
- Large Corner Plot
- Sought After Village Location

Accommodation Comprises:

Hallway

Living Room

14'2 x 11' (4.32m x 3.35m)

Kitchen

9'1 x 17'4 (2.77m x 5.28m)

Hallway

Storage

First Floor Landing

Bedroom

14'2 x 10'1 (4.32m x 3.07m)

Bedroom

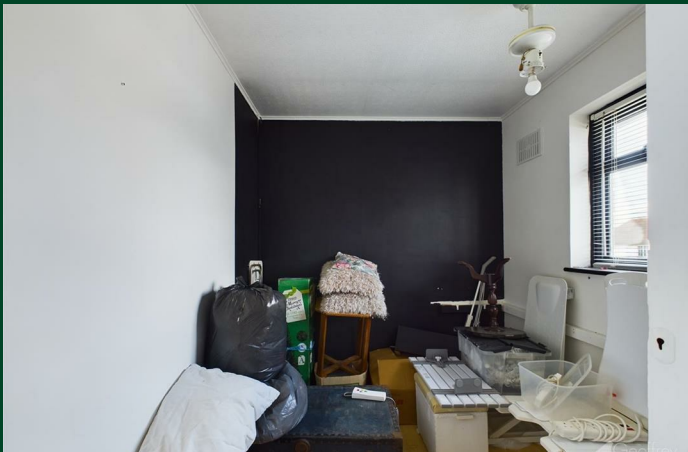
10'7 x 11'1 (3.23m x 3.38m)

Bedroom

10' x 6'11 (3.05m x 2.11m)

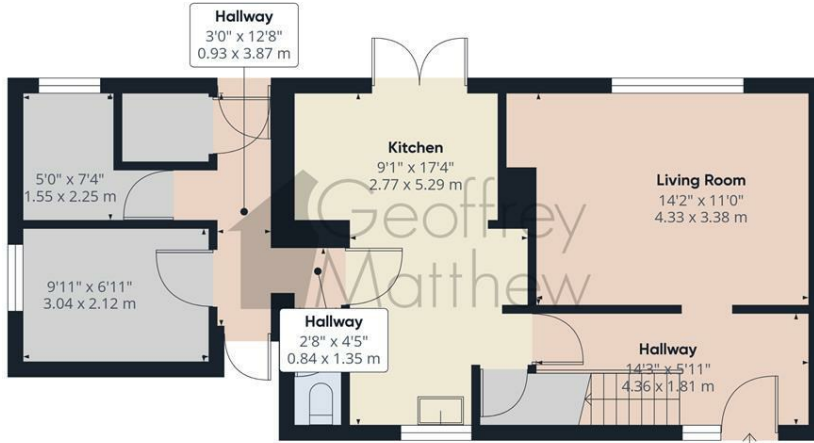
Bathroom

6'2 x 5'10 (1.88m x 1.78m)

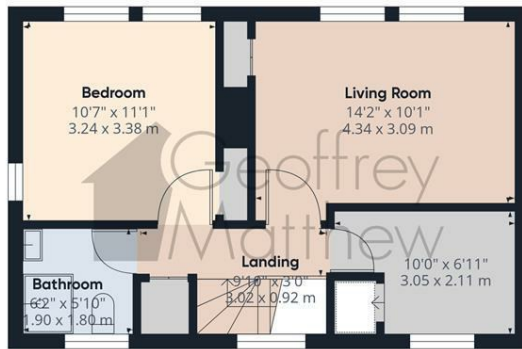




Floor Plan



Floor 0



Floor 1



Approximate total area^m
1051.33 ft²
97.67 m²

(1) Excluding balconies and terraces

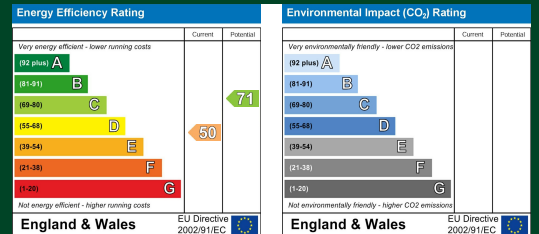
While every attempt has been made to ensure accuracy, all measurements are approximate, not to scale. This floor plan is for illustrative purposes only.

GIRAFFE 360



Council Tax Details

East Herts Band: D



These particulars, whilst believed to be accurate are set out as a general outline only for guidance and do not constitute any part of an offer or contract. Intending purchasers should not rely on them as statements of representation of fact, but must satisfy themselves by inspection or otherwise as to their accuracy. No person in this firm's employment has the authority to make or give any representation or warranty in respect of the property.

Old Harlow: 01279 444988 Email: harlow@geoffreymatthew.co.uk
Great Ashby: 01438 740111 Email: greatashby@geoffreymatthew.co.uk