



## Chippingfield, Old Harlow, CM17 0DJ

Offers Between £375,000 & £400,000!

Geoffrey Matthew Estates are delighted to offer this three bedroom, end of terrace, freehold house in the much sought after area of Chippingfield, Old Harlow. Benefitting from three good size bedrooms, through lounge, kitchen/breakfast room, ground floor w.c and a generous rear garden.

Early viewings are highly recommended!

**Guide Price £375,000**

# Chippingfield, Old Harlow, CM17 0DJ



- Three Bedrooms
- Generous Rear Garden
- End of Terrace
- Freehold
- Ground Floor W.C
- Sought After Location

## Accommodation Comprises:

### Bedroom

10'7 x 9'9 (3.23m x 2.97m)

### Entrance Hall

### Bedroom

10'6 x 8'9 (3.20m x 2.67m)

### Lounge

10'5 x 18'10 (3.18m x 5.74m)

### Bathroom

8'6 x 5'7 (2.59m x 1.70m)

### Kitchen/Breakfast Room

15'6 x 9'10 (4.72m x 3.00m)

### Utility

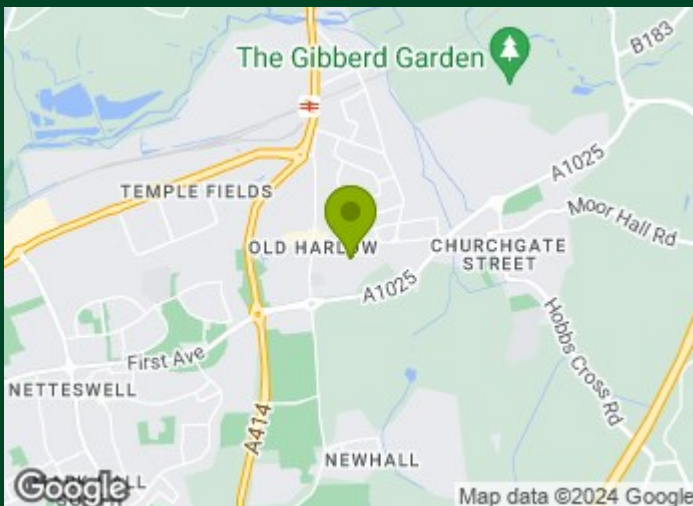
5'7 x 6'4 (1.70m x 1.93m)

### W.C

### First Floor Landing

### Bedroom

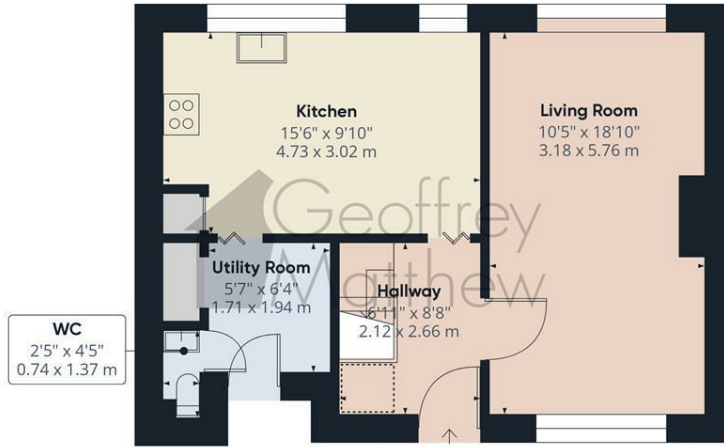
13'8 x 9'9 (4.17m x 2.97m)



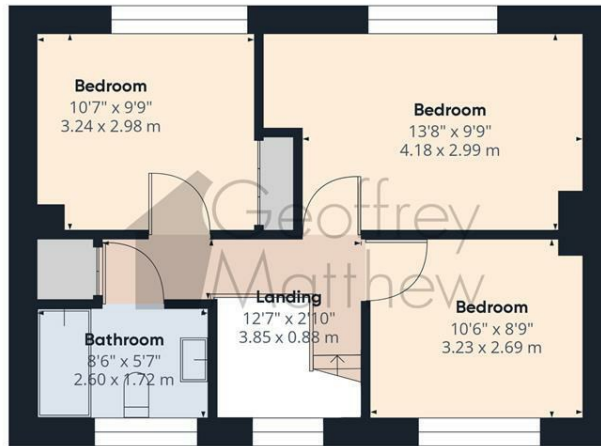
## Directions



# Floor Plan



Floor 0



Floor 1



**Approximate total area<sup>(1)</sup>**  
915.38 ft<sup>2</sup>  
85.04 m<sup>2</sup>

**Reduced headroom**  
6.37 ft<sup>2</sup>  
0.59 m<sup>2</sup>

(1) Excluding balconies and terraces

Reduced headroom  
(below 1.5m/4.92ft)

While every attempt has been made to ensure accuracy, all measurements are approximate, not to scale. This floor plan is for illustrative purposes only.

GIRAFFE360

## Council Tax Details

Harlow Band D

These particulars, whilst believed to be accurate are set out as a general outline only for guidance and do not constitute any part of an offer or contract. Intending purchasers should not rely on them as statements of representation of fact, but must satisfy themselves by inspection or otherwise as to their accuracy. No person in this firm's employment has the authority to make or give any representation or warranty in respect of the property.

