



Godfrey House, Edinburgh Way, Harlow, CM20 2UE

Geoffrey Matthew Estates are delighted to offer this unfurnished 2 bedroom 2 bathroom apartment to rent in the new Edinburgh Way development. This property is finished to a very high standard throughout. The internal living space comprises of an entrance hall leading to the open plan kitchen/living space with a door leading to a private balcony allowing for plenty of natural light to enter the apartment, there are 2 double bedrooms both with an ensuite bathroom. Additional features include, gas central heating and an allocated parking space. EPC Band B.

Viewing is highly recommended.

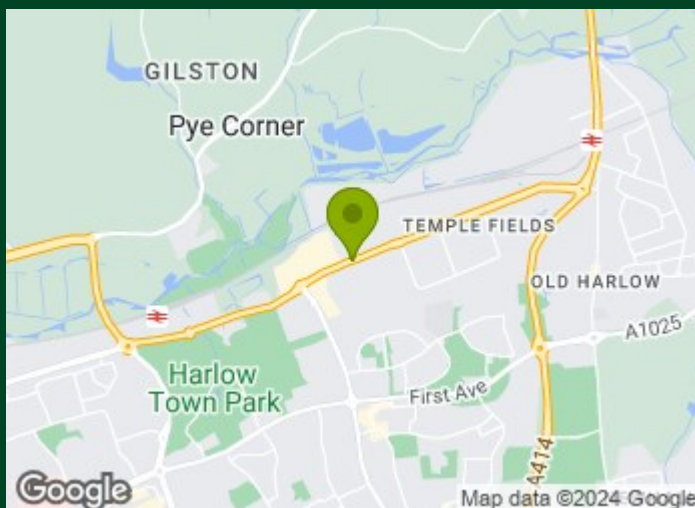
A Holding deposit equivalent to one weeks rent is payable to apply for this property.

£1,700 Per Calendar Month

Godfrey House, Edinburgh Way, Harlow, CM20 2UE



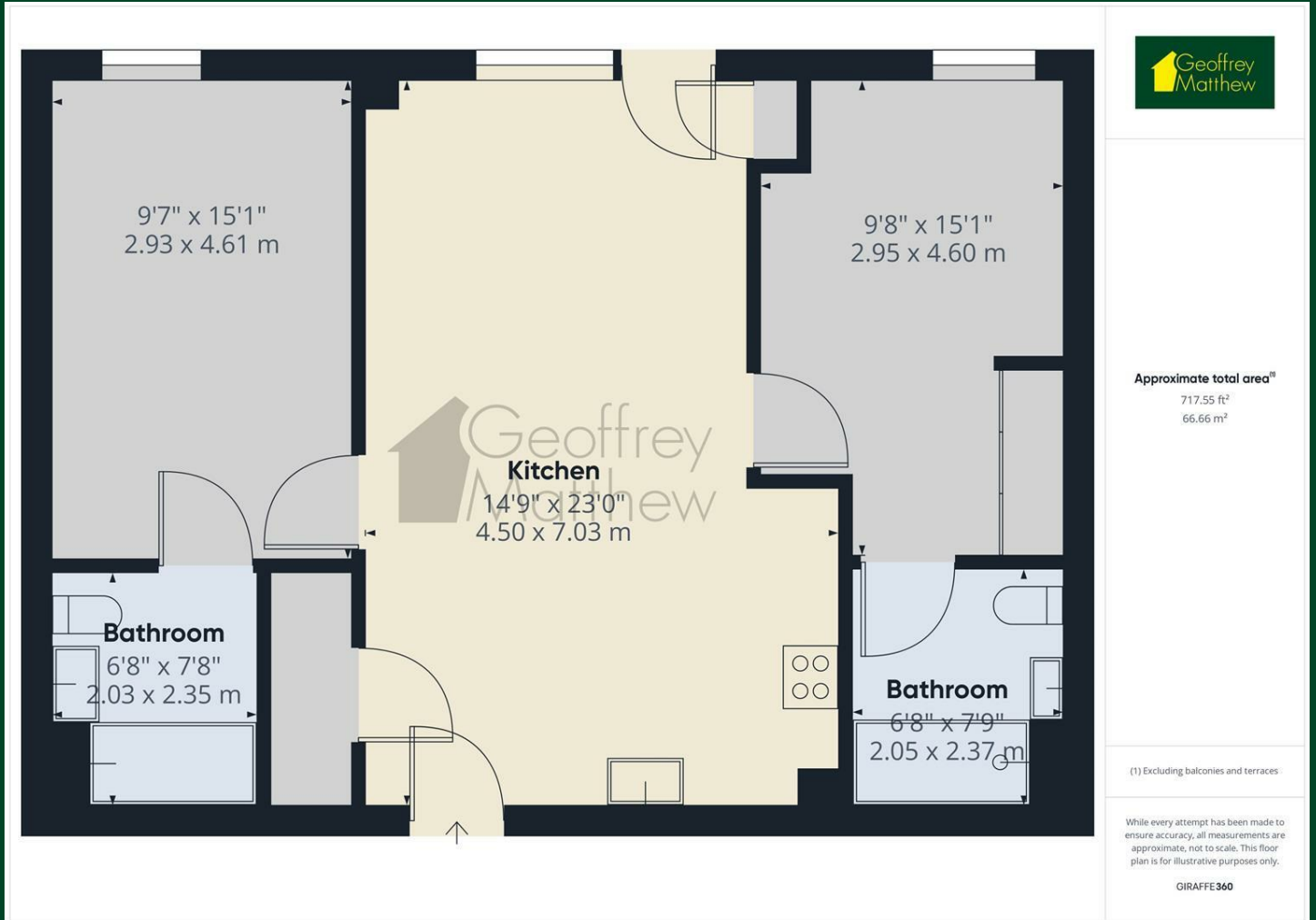
- Unfurnished
- Close to Harlow Town Train Station and PAH
- Council Tax Band Awaiting
- Two Double Bedrooms
- Allocated Parking
- Available Mid April
- New Build
- EPC Band B



[Directions](#)



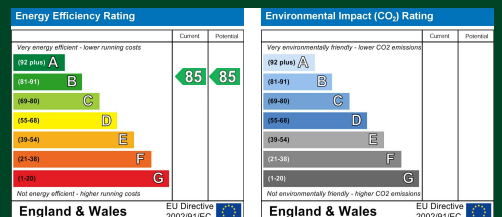
Floor Plan



Council Tax Details

Harlow Council Band D

These particulars, whilst believed to be accurate are set out as a general outline only for guidance and do not constitute any part of an offer or contract. Intending purchasers should not rely on them as statements of representation of fact, but must satisfy themselves by inspection or otherwise as to their accuracy. No person in this firm's employment has the authority to make or give any representation or warranty in respect of the property.



Old Harlow: 01279 444988 Email: harlow@geoffreymatthew.co.uk
 Great Ashby: 01438 740111 Email: greatashby@geoffreymatthew.co.uk