



## Aynsley Gardens, Church Langley, Harlow, CM17 9PB

Geoffrey Matthew Estates are delighted to offer this well presented, two bedroom, first floor apartment in the popular residential location of Aynsley Gardens in the sought after Church Langley area. Benefitting from modern fitted kitchen and bathroom, recently upgraded Upvc double glazing throughout and one allocated parking bay, this property would be ideally suited to a first time buyer.

Early viewings are highly recommended!

Offers In The Region Of £230,000

# Aynsley Gardens, Church Langley, Harlow, CM17 9PB



- Two Bedrooms
- Recently Upgraded Upvc Double Glazing
- First Floor
- Modern Kitchen
- One Allocated Parking Bay
- Modern Bathroom Suite

## Entrance Hall

1995.

## Lounge

14'6 x 13'8 (4.42m x 4.17m)

Annual service charge aprox £1,130.

Annual Ground rent £200.

## Kitchen

8' x 7' (2.44m x 2.13m)

## Bedroom

11'2 x 10'1 (3.40m x 3.07m)

## Bedroom

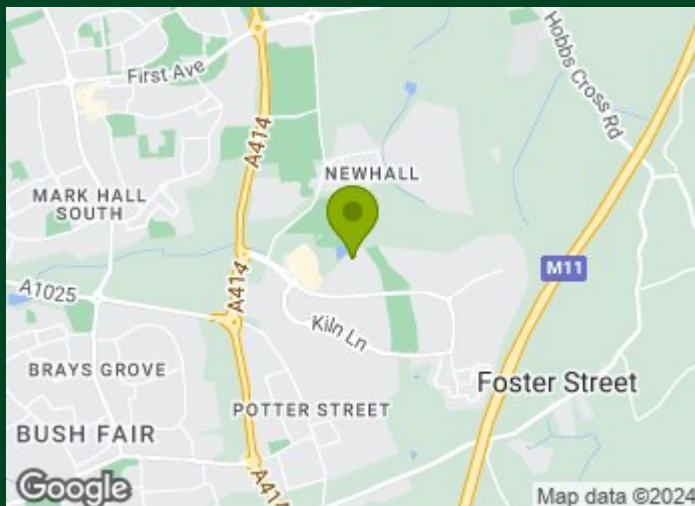
10'10 x 7' (3.30m x 2.13m)

## Bathroom

6'5 x 5'6 (1.96m x 1.68m)

## Agent Note

Lease detail. 125 years from 25th Dec

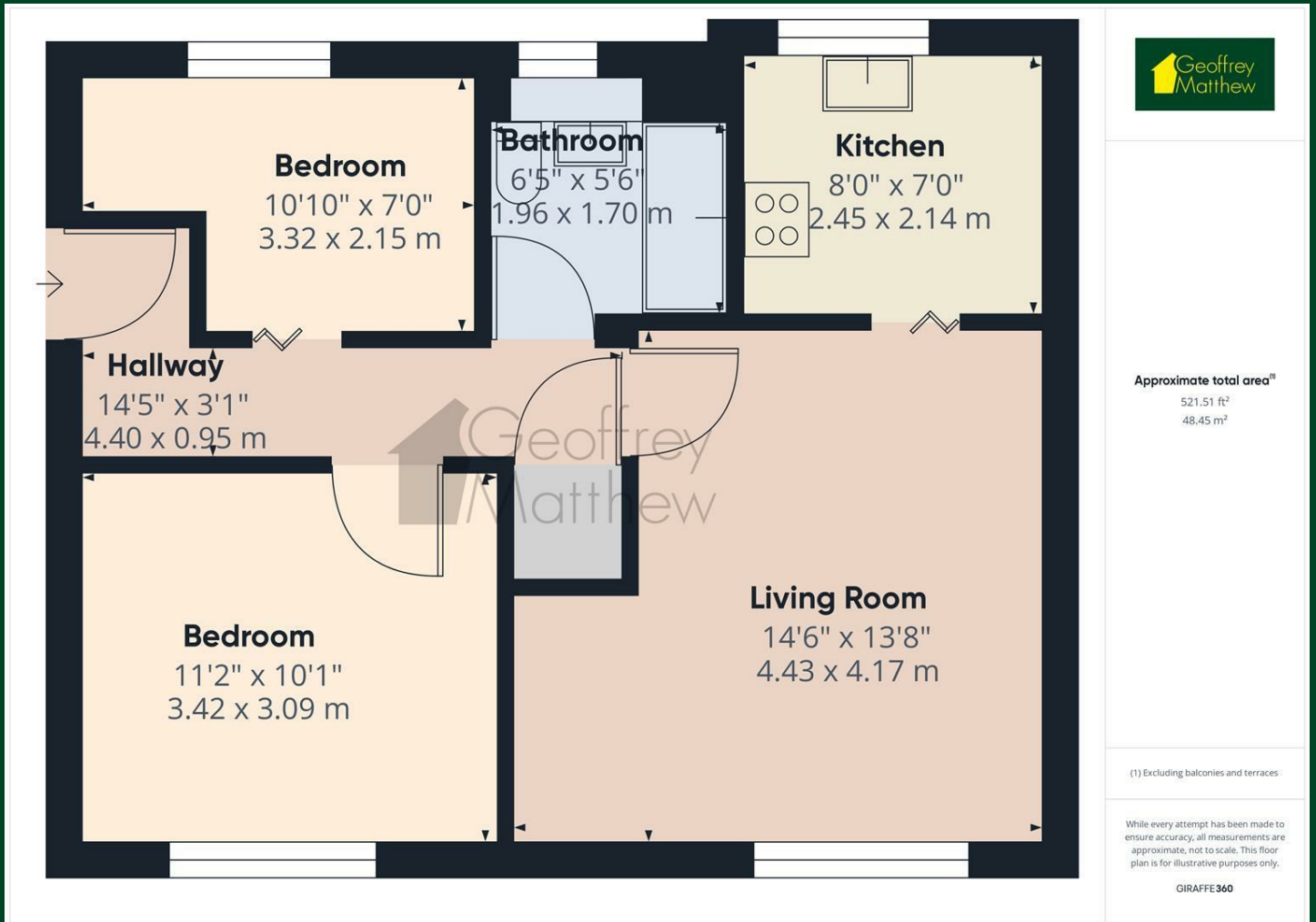


## Directions





# Floor Plan



## Council Tax Details

Harlow Band C

These particulars, whilst believed to be accurate are set out as a general outline only for guidance and do not constitute any part of an offer or contract. Intending purchasers should not rely on them as statements of representation of fact, but must satisfy themselves by inspection or otherwise as to their accuracy. No person in this firm's employment has the authority to make or give any representation or warranty in respect of the property.

