



## Fore Street, Harlow, CM17 0AA

Geoffrey Matthew Estates are delighted to offer this characterful shop for let, located in Old Harlow in a fairly prominent position. Available on a 5 year lease starting at £12000 per annum. Annual review based on RPI. Cloakroom facilities, small kitchenette and shop/office space. AVAILABLE NOW!

Please contact us for further information.

£12,000 Per Annum

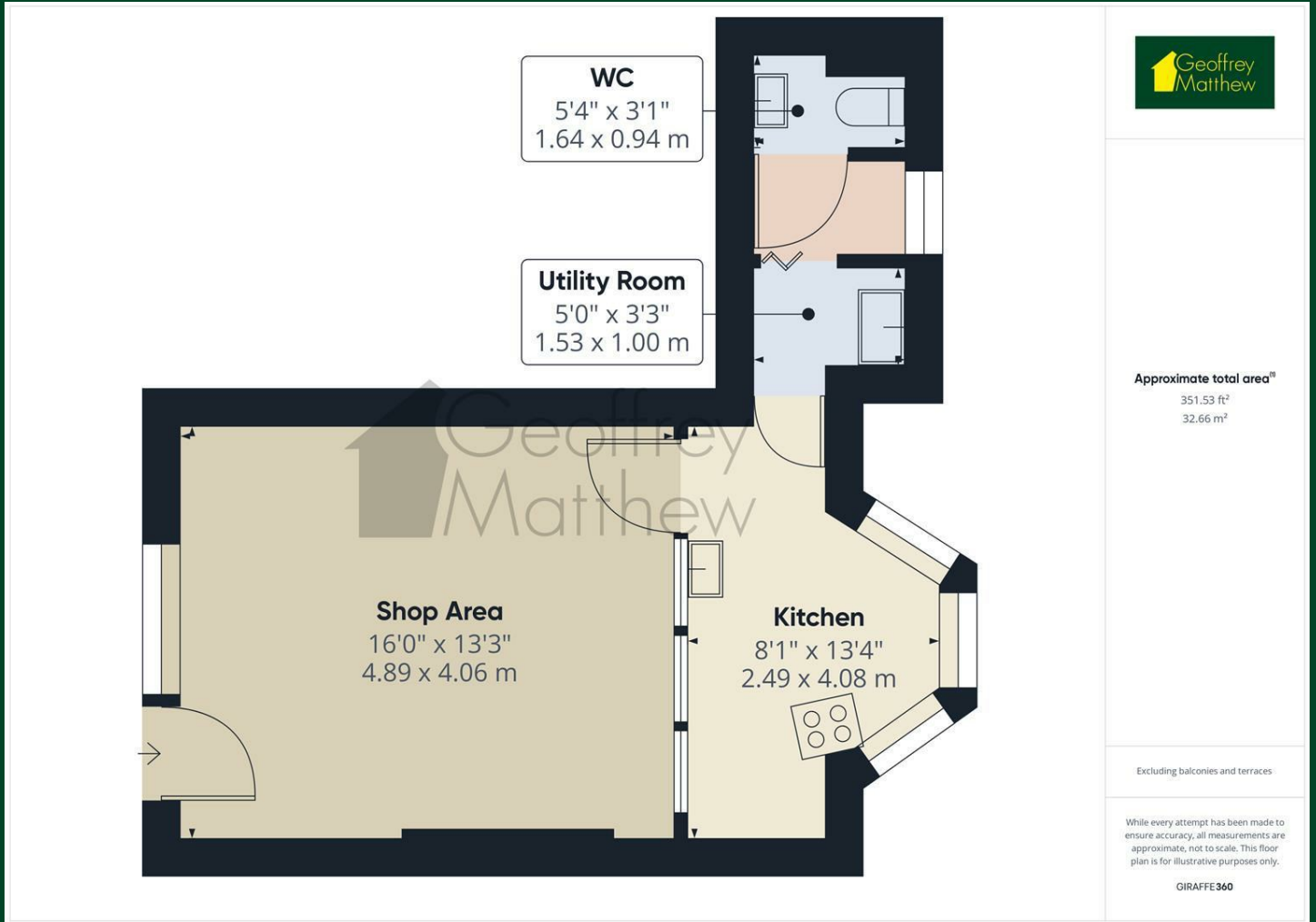
Fore Street, Harlow, CM17 0AA



[Directions](#)



# Floor Plan



## Council Tax Details

Band

These particulars, whilst believed to be accurate are set out as a general outline only for guidance and do not constitute any part of an offer or contract. Intending purchasers should not rely on them as statements of representation of fact, but must satisfy themselves by inspection or otherwise as to their accuracy. No person in this firm's employment has the authority to make or give any representation or warranty in respect of the property.

Energy Efficiency Rating		Environmental Impact (CO <sub>2</sub> ) Rating	
Current	Potential	Current	Potential
Very energy efficient - lower running costs 92 plus <b>A</b> (81-91)		Very environmentally friendly - lower CO <sub>2</sub> emissions 92 plus <b>A</b> (81-91)	
<b>B</b> (69-80)		<b>B</b> (69-80)	
<b>C</b> (55-68)		<b>C</b> (55-68)	
<b>D</b> (39-54)		<b>D</b> (39-54)	
<b>E</b> (21-38)		<b>E</b> (21-38)	
<b>F</b> (1-20)		<b>F</b> (1-20)	
Not energy efficient - higher running costs <b>G</b>		Not environmentally friendly - higher CO <sub>2</sub> emissions <b>G</b>	

England & Wales EU Directive 2002/91/EC