



Elmbridge, Harlow, CM17 0JX

Geoffrey Matthew Estates are delighted to offer for sale this immaculately presented, three bedroom, semi detached house in the highly sought after location of Elmbridge in Churchgate Street Village. Offering spacious and versatile living accommodation, driveway and garage, and a beautifully landscaped rear garden. This property is certain to prove popular so early viewings are highly recommended!

Offers In The Region Of £495,000

Elmbridge, Harlow, CM17 0JX



- Three Bedrooms
- Landscaped Rear Garden
- Semi Detached
- Sought After Location
- Driveway & Garage
- Viewings Highly Recommended!

Accommodation Comprises:

Entrance Porch

5'1 x 7'3 (1.55m x 2.21m)

Hallway

Living Room

23'8 x 12'2 (7.21m x 3.71m)

Kitchen

15' x 9'1 (4.57m x 2.77m)

Dining Room

13'2 x 8'11 (4.01m x 2.72m)

Office

13'4 x 9'11 (4.06m x 3.02m)

Utility Area

4'11 x 6'4 (1.50m x 1.93m)

WC

5' x 3'10 (1.52m x 1.17m)

Garage

17'1 x 10'7 (5.21m x 3.23m)

Landing

Bedroom

12'8 x 11' (3.86m x 3.35m)

Bedroom

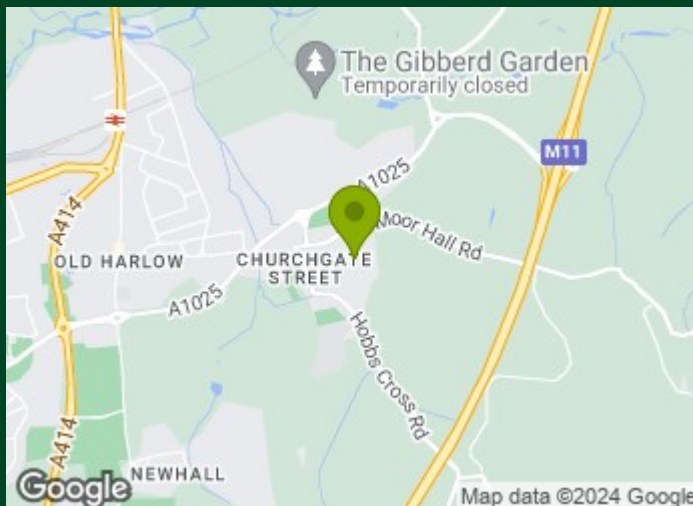
10'6 12'3 (3.20m 3.73m)

Bedroom

7'8 x 7' (2.34m x 2.13m)

Bathroom

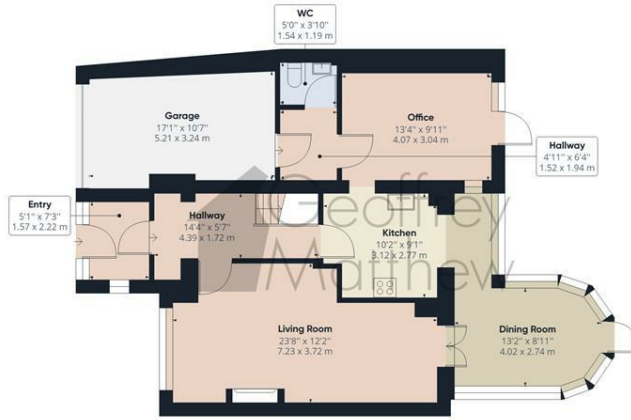
4'10 x 8'3 (1.47m x 2.51m)



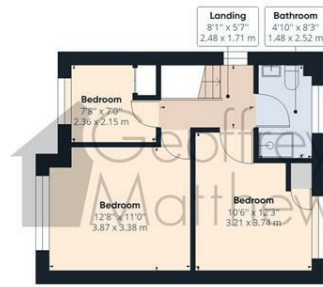
Directions



Floor Plan



Floor 0



Floor 1



Approximate total area⁽¹⁾
1380.41 ft²
128.24 m²

(1) Excluding balconies and terraces

While every attempt has been made to ensure accuracy, all measurements are approximate, not to scale. This floor plan is for illustrative purposes only.

GIRAFFE360

Council Tax Details

Harlow Band D

These particulars, whilst believed to be accurate are set out as a general outline only for guidance and do not constitute any part of an offer or contract. Intending purchasers should not rely on them as statements of representation of fact, but must satisfy themselves by inspection or otherwise as to their accuracy. No person in this firm's employment has the authority to make or give any representation or warranty in respect of the property.

