



Heighams, Harlow, CM19 5NU

Geoffrey Matthew Estates are delighted to offer for sale this three bedroom, mid terrace, family home in the popular residential area of Heighams. With ample off street parking & garage, the internal accommodation includes a generous lounge, conservatory, kitchen, utility room and cloakroom on the ground floor, with three good size bedrooms and family bathroom on the first floor. The property also benefits from an unoverlooked rear garden.

Early viewings are highly recommended!

£340,000

Heighams, Harlow, CM19 5NU



- Three Bedrooms
- Conservatory
- Driveway
- Ground Floor W.C
- Garage
- Freehold

Accommodation Comprises:

Entrance Hall

Cloakroom

5'1 x 3'1 (1.55m x 0.94m)

Lounge

21'3 x 11'2 (6.48m x 3.40m)

Conservatory

10'10 x 8'8 (3.30m x 2.64m)

Kitchen

7'3 x 9'9 (2.21m x 2.97m)

Hallway

Utility Room

5'5 x 8'4 (1.65m x 2.54m)

First Floor Landing

Bedroom

10'10 x 11'5 (3.30m x 3.48m)

Bedroom

8'4 x 11'6 (2.54m x 3.51m)

Bedroom

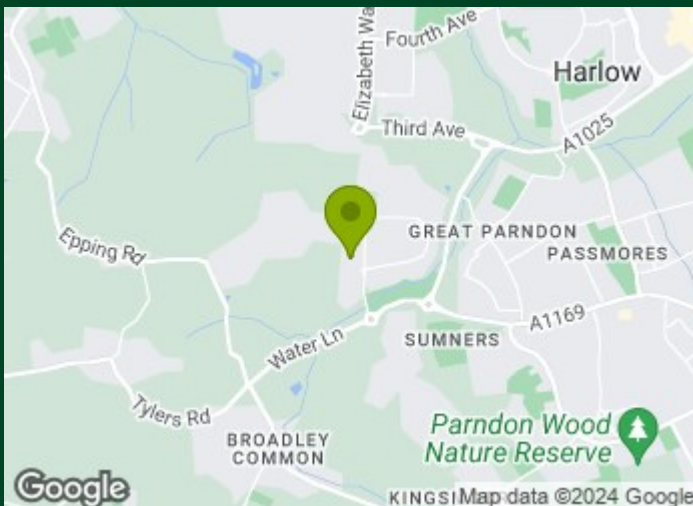
7'8 x 9'8 (2.34m x 2.95m)

Bathroom

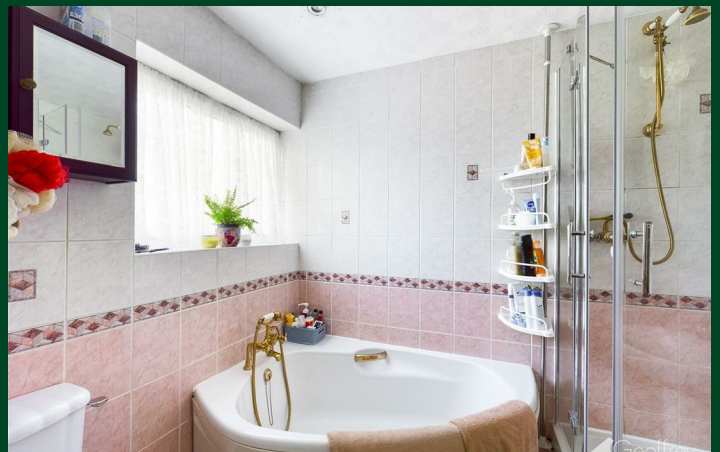
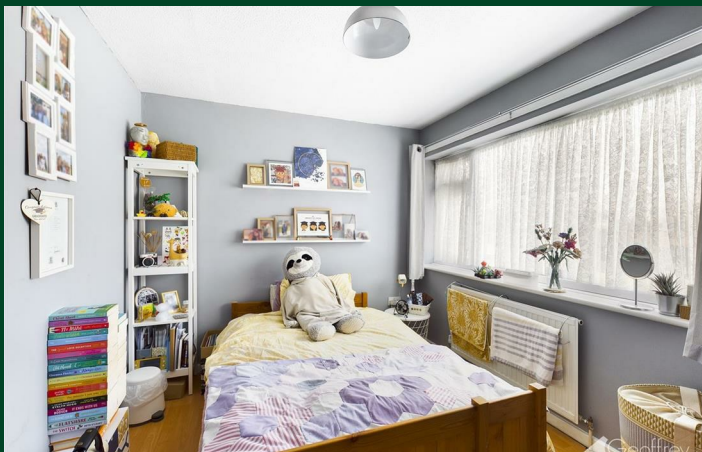
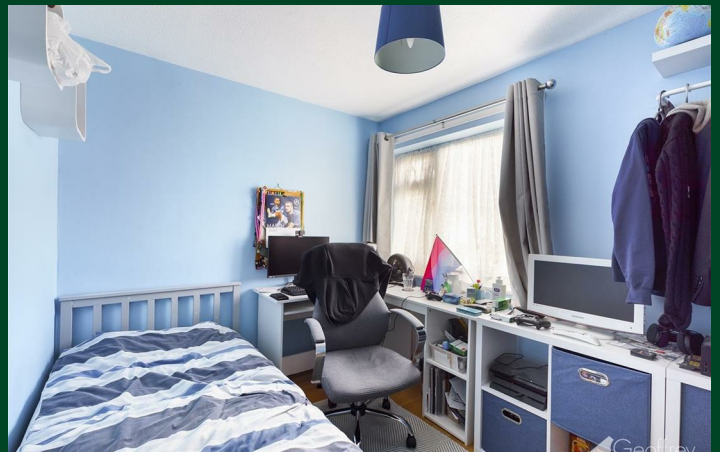
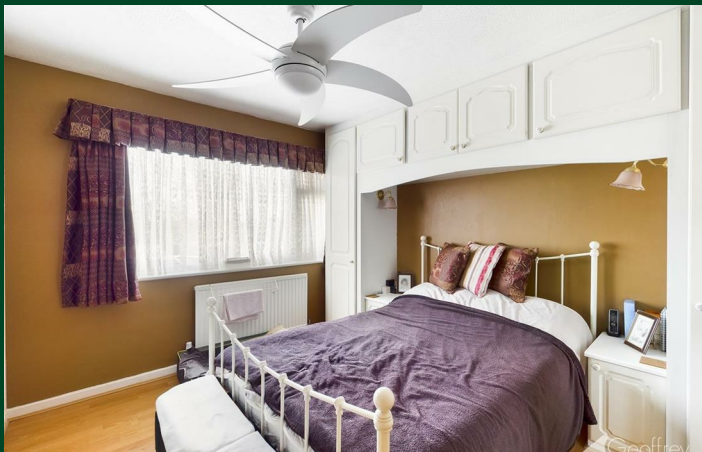
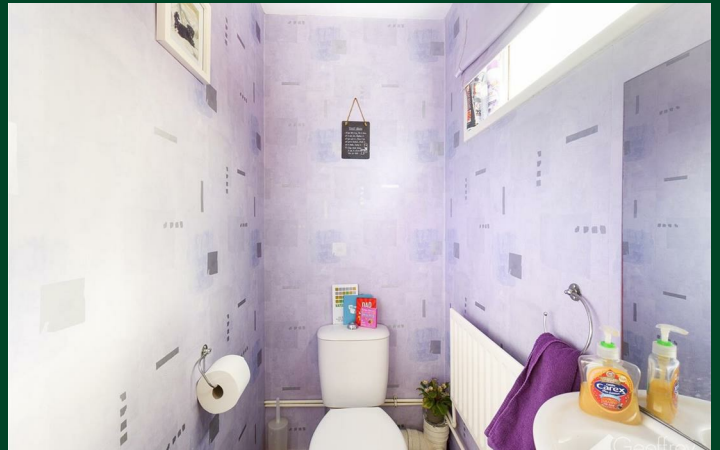
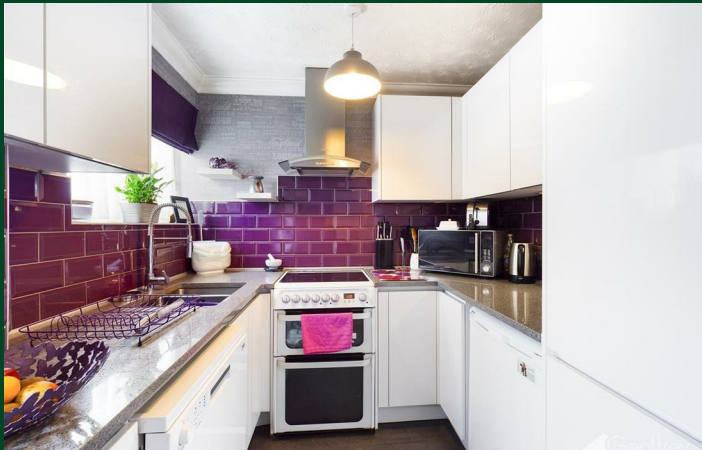
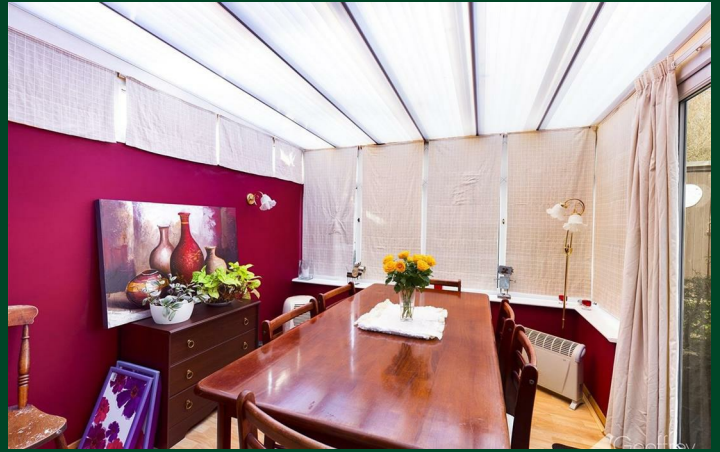
7'7 x 6'10 (2.31m x 2.08m)

Garage

13'11 x 9'1 (4.24m x 2.77m)



Directions



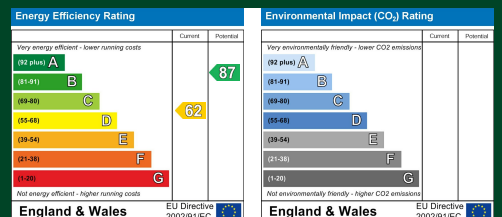
Floor Plan



Council Tax Details

Harlow Band D

These particulars, whilst believed to be accurate are set out as a general outline only for guidance and do not constitute any part of an offer or contract. Intending purchasers should not rely on them as statements of representation of fact, but must satisfy themselves by inspection or otherwise as to their accuracy. No person in this firm's employment has the authority to make or give any representation or warranty in respect of the property.



Old Harlow: 01279 444988 Email: harlow@geoffreymatthew.co.uk
Great Ashby: 01438 740111 Email: greatashby@geoffreymatthew.co.uk