



Abbots Way, Monks Risborough - HP27
£250,000

TR TIM RUSS
& Company



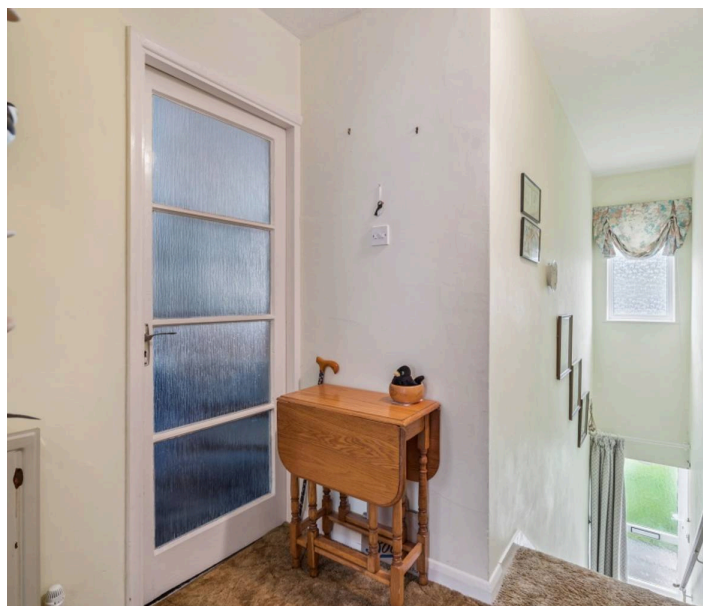
- Large living/dining area with plenty of natural light.
- Two well sized double bedrooms.
- Quiet, sought-after location in Monks Risborough.
- Close proximity to local shops, countryside walks and village amenities
- Excellent transport links nearby, including Monks Risborough station.
- Separate kitchen with potential to modernise or reconfigure.

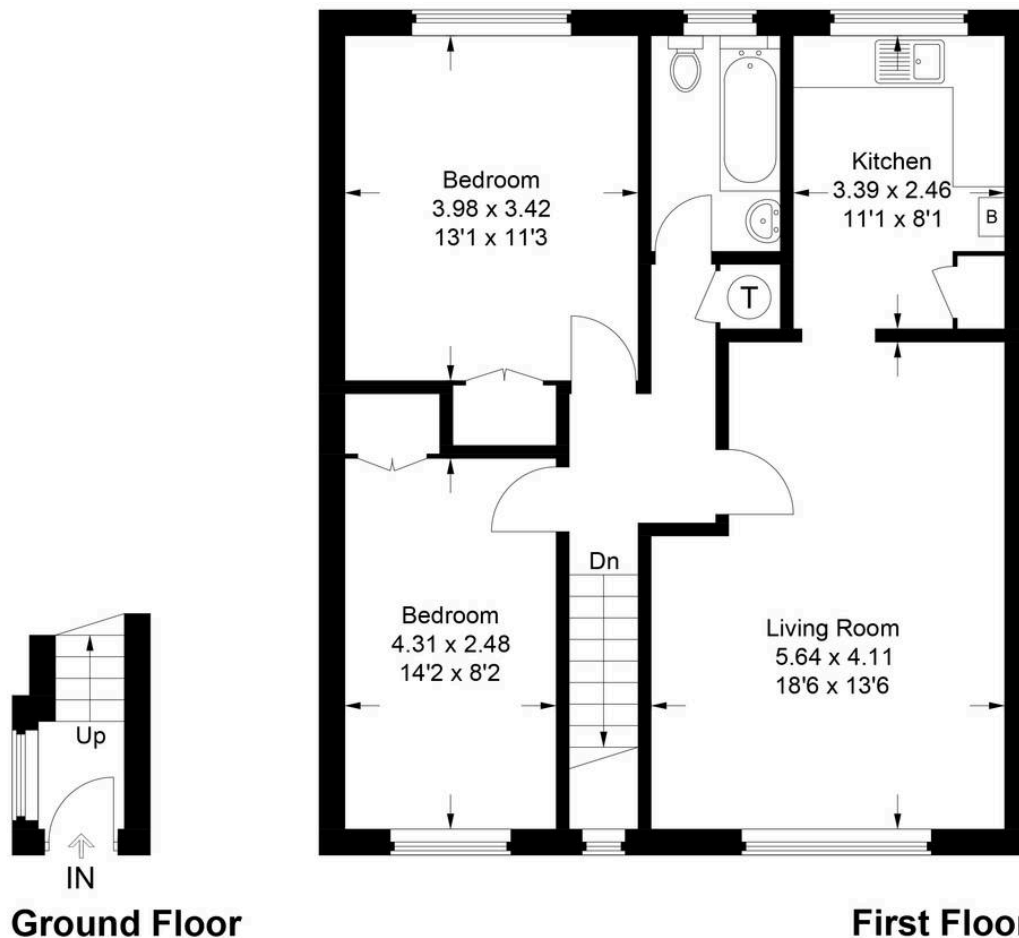


A spacious two bedroom flat offering an excellent opportunity for buyers looking to modernise and add value. Situated in the sought after village of Monks Risborough, this well proportioned home features a bright living/dining room, two generous bedrooms, a separate kitchen and a family bathroom. The property boasts a superb layout, plenty of natural light and strong potential throughout. Ideally positioned close to local amenities, countryside walks and Monks Risborough station.

Council Tax band: C

Tenure: Leasehold





Approximate Gross Internal Area
 Ground Floor = 2.3 sq m / 25 sq ft
 First Floor = 70.4 sq m / 758 sq ft
 Total = 72.7 sq m / 783 sq ft

This plan is for layout guidance only. Not drawn to scale unless stated. Windows and door openings are approximate. Whilst every care is taken in the preparation of this plan, please check all dimensions, shapes and compass bearings before making any decisions reliant upon them.
 © CJ Property Marketing Ltd Produced for Tim Russ & Company

Tim Russ and Company

Tim Russ Ltd, 1 High Street - HP27 0AE

01844 275522 • p.risborough@timruss.co.uk • timruss.co.uk/

By law we must verify every seller and buyer for anti-money laundering purposes.
 Checks are carried out by our partners at Lifetime Legal for a non-refundable £60 (incl. VAT) fee, paid directly to them.
 For more information please visit our website.



Particulars described on our website and in marketing materials are for indicative purposes only; their complete accuracy cannot be guaranteed. Details such as boundary lines, rights of way, or property condition should not be treated as fact. Interested parties are advised to consult their own surveyor, solicitor, or other professional before committing to any expenditure or legal obligations.