



Princes Risborough

In Excess of £550,000

 **TIM RUSS**
& Company



Princes Risborough

This stylish three bedroom home is perfect for modern family living. The heart of the house is a beautiful open-plan kitchen and dining area, complemented by a separate living room and a bright study. A downstairs cloakroom adds to the practical layout. Upstairs, three bedrooms and a sleek family bathroom offer relaxed, comfortable spaces. Outside, a large south facing private garden, garage, and parking for four cars complete this fantastic home, just a short walk from schools and the town centre.



Princes Risborough

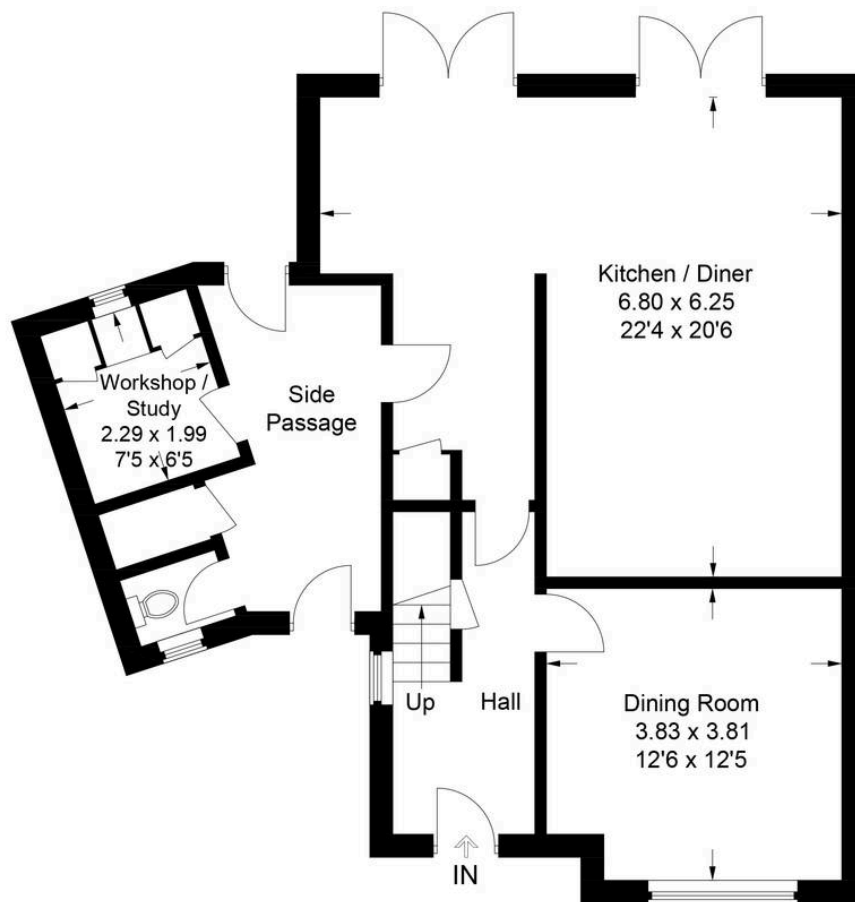
Council Tax band: E

Tenure: Freehold

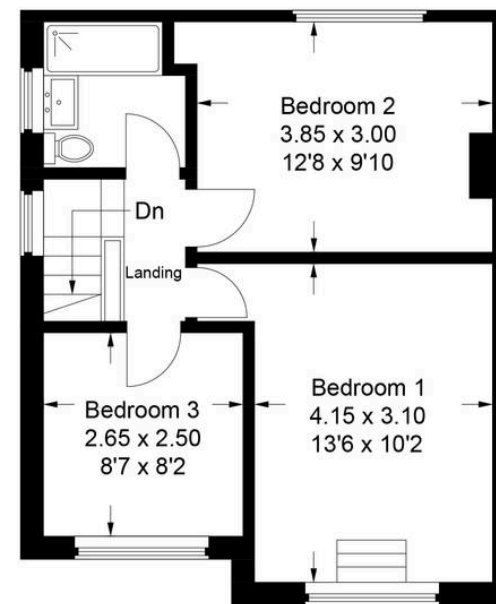
- Beautiful south facing garden
- Living room
- Open plan kitchen diner
- Garage
- Parking for four cars
- Close to school and town
- Quiet location







Ground Floor



First Floor

12 Merton Road

Approximate Gross Internal Area = 118 sq m / 1,270 sq ft

This plan is for layout guidance only. Not drawn to scale unless stated. Windows and door openings are approximate. Whilst every care is taken in the preparation of this plan, please check all dimensions, shapes and compass bearings before making any decisions reliant upon them.

© CJ Property Marketing Ltd Produced for Tim Russ & Company

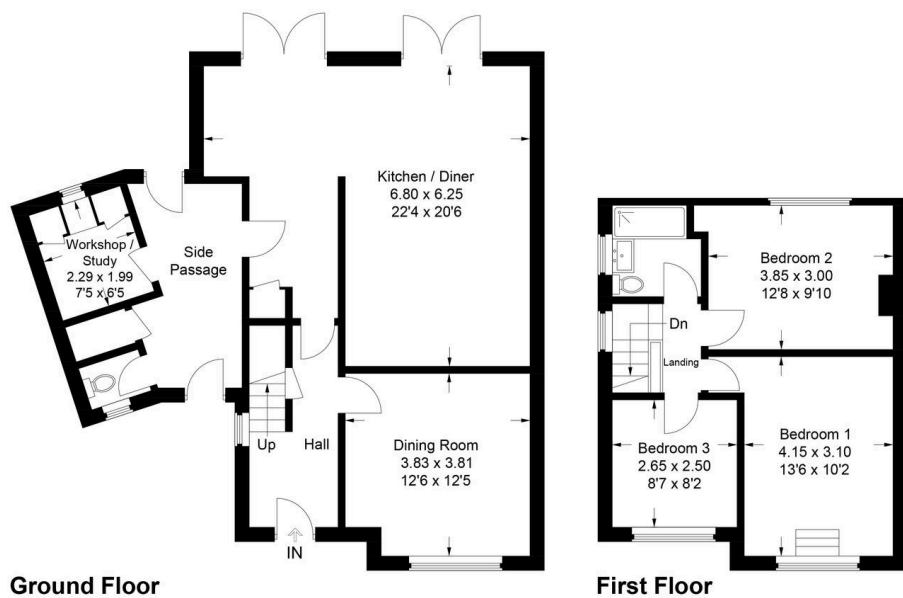


Tim Russ and Company

Tim Russ Ltd, 1 High Street - HP27 0AE

01844 275522 • p.risborough@timruss.co.uk • timruss.co.uk/





12 Merton Road

Approximate Gross Internal Area = 118 sq m / 1,270 sq ft

This plan is for layout guidance only. Not drawn to scale unless stated. Windows and door openings are approximate. Whilst every care is taken in the preparation of this plan, please check all dimensions, shapes and compass bearings before making any decisions reliant upon them.

© CJ Property Marketing Ltd Produced for Tim Russ & Company

