



St. Peters Close, Speen - HP27 0SS
£895,000

 **TIM RUSS**
& Company



St. Peters Close

Princes Risborough

- Chiltern Village Cul-de-Sac
- Four Bedrooms
- Excellent Decorative Order
- Cloakroom, Family Bathroom and En-suite
- Dining Room
- Large Living Room with French Doors to Garden
- Modern Kitchen and Utility Room
- Double Garage and Driveway
- Landscaped Gardens
- No Onward Chain



St. Peters Close

Speen

Perfectly positioned in a quiet cul-de-sac in the highly sought-after Chiltern Village, this immaculate detached home offers an exceptional opportunity to enjoy the charm and community of village living, with convenience and comfort at its core.

The property features a well-balanced and generous layout, including a spacious living room with French doors opening onto beautifully landscaped, south-facing gardens – an ideal setting for both relaxation and entertaining. A separate dining room, modern kitchen, utility room, and cloakroom enhance the functionality of the ground floor, while four well-appointed bedrooms, a family bathroom, and en-suite provide ample space upstairs. A double garage and private driveway complete the offering.

The home has been lovingly maintained and also presents exciting potential to extend, subject to the necessary planning permissions – perfect for those looking to create a long-term forever home tailored to their needs.

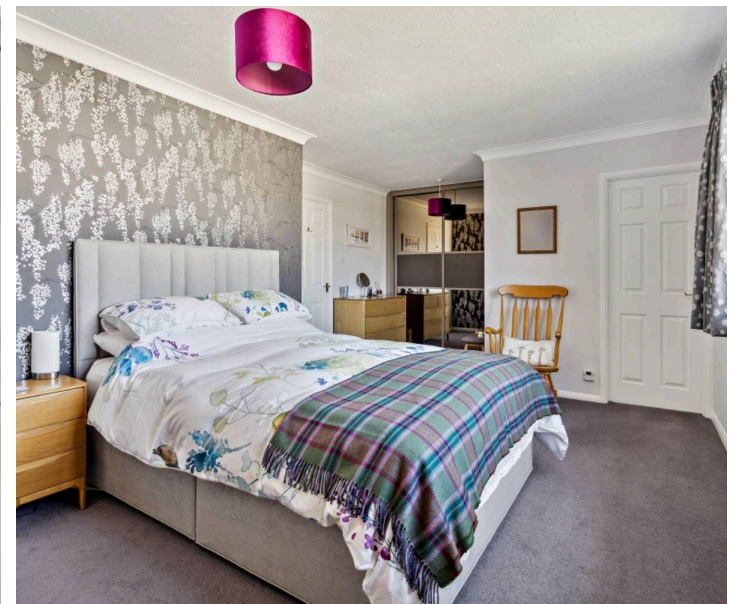
Outside, the peaceful garden serves as a private oasis, perfect for al fresco dining. With no onward chain, this property is a rare find – combining location, space, and future potential in one appealing package.

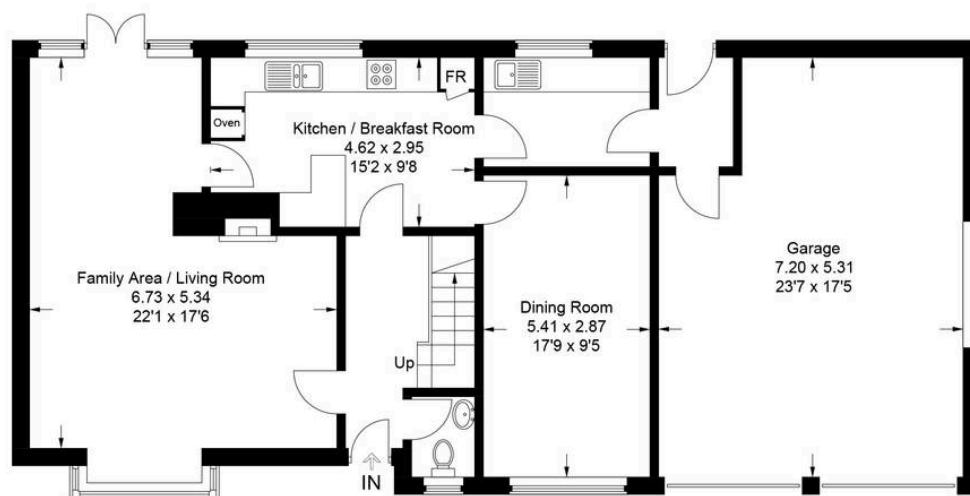
Council Tax band: G

Tenure: Freehold

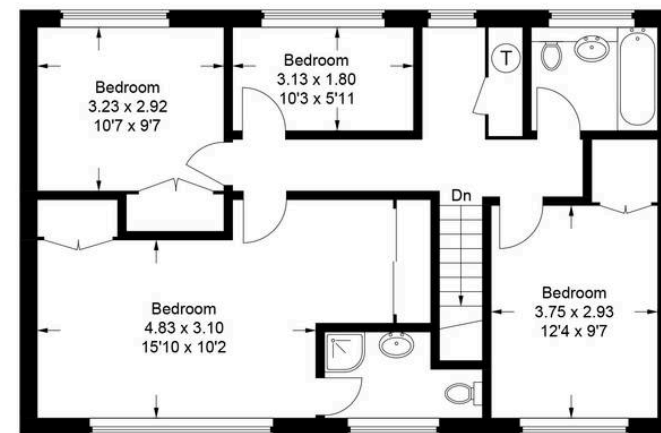
EPC Energy Efficiency Rating: D

EPC Environmental Impact Rating: D





Ground Floor



First Floor

Approximate Gross Internal Area (Including Garage)

Ground Floor = 116.9 sq m / 1259 sq ft

First Floor = 73.4 sq m / 790 sq ft

Total = 190.3 sq m / 2049 sq ft

This plan is for layout guidance only. Not drawn to scale unless stated. Windows and door openings are approximate. Whilst every care is taken in the preparation of this plan, please check all dimensions, shapes and compass bearings before making any decisions reliant upon them.

© CJ Property Marketing Ltd Produced for Tim Russ & Company



Tim Russ and Company

Princes Risborough, 1 High Street - HP27 0AE

01844 275522 • p.risborough@timruss.co.uk • timruss.co.uk/

