



Church Street, Princes Risborough - HP27 9AA
£220,000

 **TIM RUSS**
& Company



The Old Garden Centre Church Street

Princes Risborough

- Town centre location
- Light & airy
- Courtyard
- Spacious apartment



The Old Garden Centre Church Street

Princes Risborough

This spacious and well-located one bedroom maisonette offers plenty of natural light and a welcoming feel. Set within the Old Garden Centre, it has a unique character and a private courtyard, providing a quiet outdoor space to enjoy.

The maisonette is set just at the end of the high street, with shops, cafes, and transport links all within easy reach. With no onward chain, it's ready for a straightforward move.

For more information or to arrange a viewing, get in touch today.

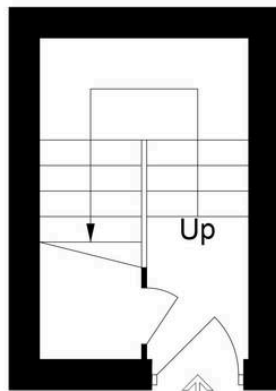
Council Tax band: C

Tenure: Leasehold - 999 Years from 1984

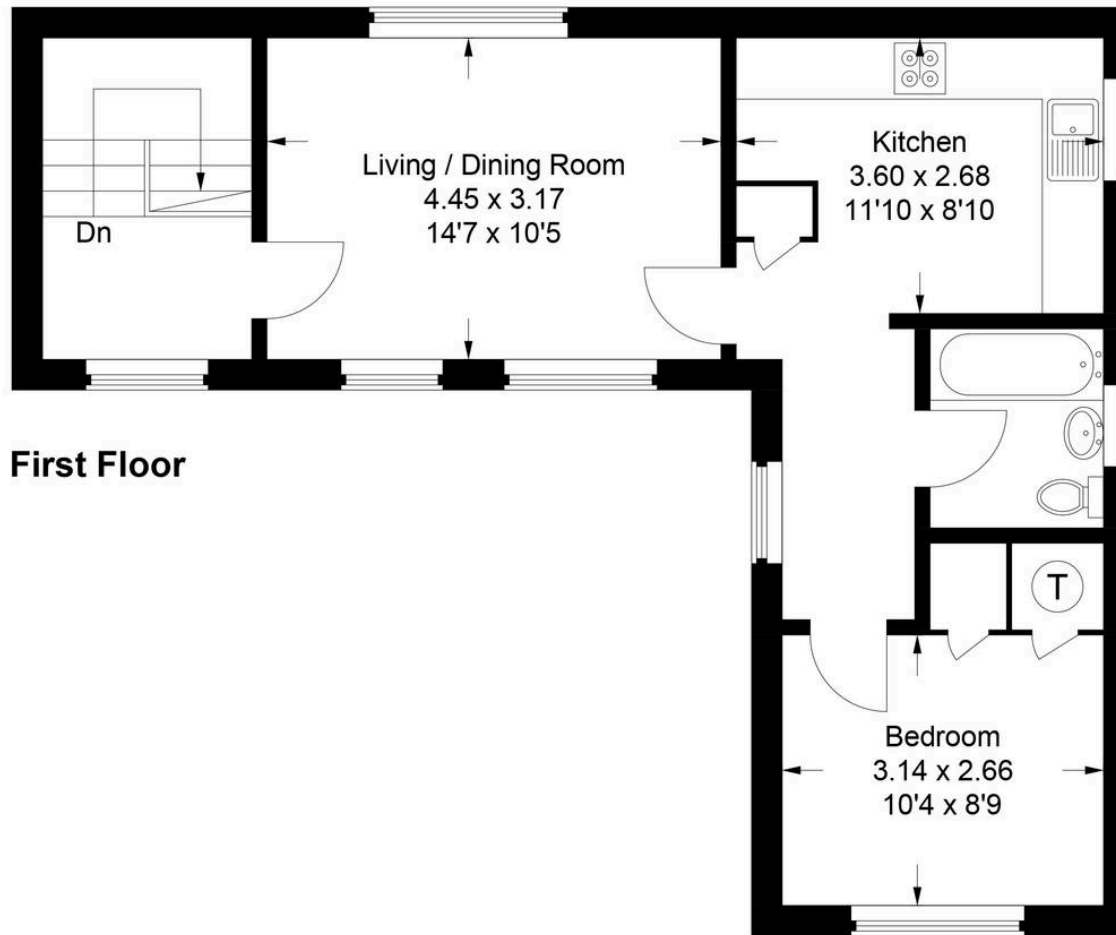
Service Charge - £84 per month

EPC Rating - C





Ground Floor



First Floor

Approximate Gross Internal Area
 Ground Floor = 6.6 sq m / 71 sq ft
 First Floor = 49.6 sq m / 534 sq ft
 Total = 56.2 sq m / 605 sq ft

This plan is for layout guidance only. Not drawn to scale unless stated. Windows and door openings are approximate. Whilst every care is taken in the preparation of this plan, please check all dimensions, shapes and compass bearings before making any decisions reliant upon them.

© CJ Property Marketing Ltd Produced for Tim Russ & Company



Tim Russ and Company

1 High Street, Princes Risborough - HP27 0AE

01844 275522 • p.risborough@timruss.co.uk • timruss.co.uk/

