



Brambles Cadsden Road, Princes Risborough - HP27 0LZ

In Excess of £1,250,000

TR TIM RUSS
& Company



Brambles Cadsden Road

Princes Risborough, Princes Risborough

- IMPRESSIVE GARDENS
- SUBSTANTIAL HOME
- FOUR/FIVE BEDROOMS
- THREE RECEPTION ROOMS
- KITCHEN AND BREAKFAST ROOM
- ONE BEDROOM ANNEXE
- DOUBLE GARAGE



Brambles Cadsden Road

Princes Risborough, Princes Risborough

Substantial family home in Chiltern hamlet with stylish and versatile living spaces, large driveway, principal suite, south facing garden, and separate annexe. Viewings by appointment.

aving been significantly improved in recent years, this imposing and substantial family home is positioned in an attractive Chiltern hamlet.

The well planned living accommodation is both stylish and versatile whilst being flooded with natural light throughout. The standout features include a particularly large driveway, generous and well appointed kitchen/breakfast room, impressive principal bedroom suite and an attractive south facing garden which adjoins open fields.

The accommodation comprises three reception rooms, four/five bedrooms, en suite, family bathroom and cloakroom. Additionally there is a one bedroom self contained annexe with a large living room, kitchen and bathroom which can be seamlessly incorporated into the main residence.

Viewings

Strictly by appointment only.

Mortgage

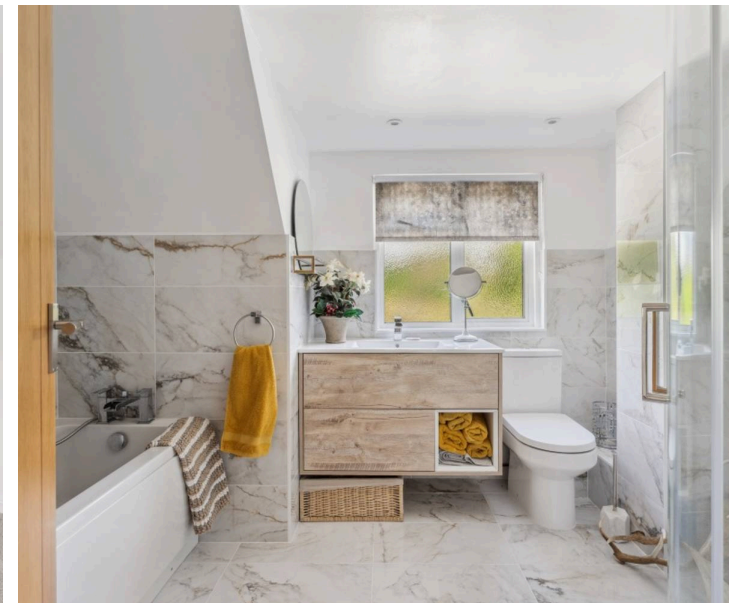
Contact your local Tim Russ & Company office who can introduce you to their professional financial advisor

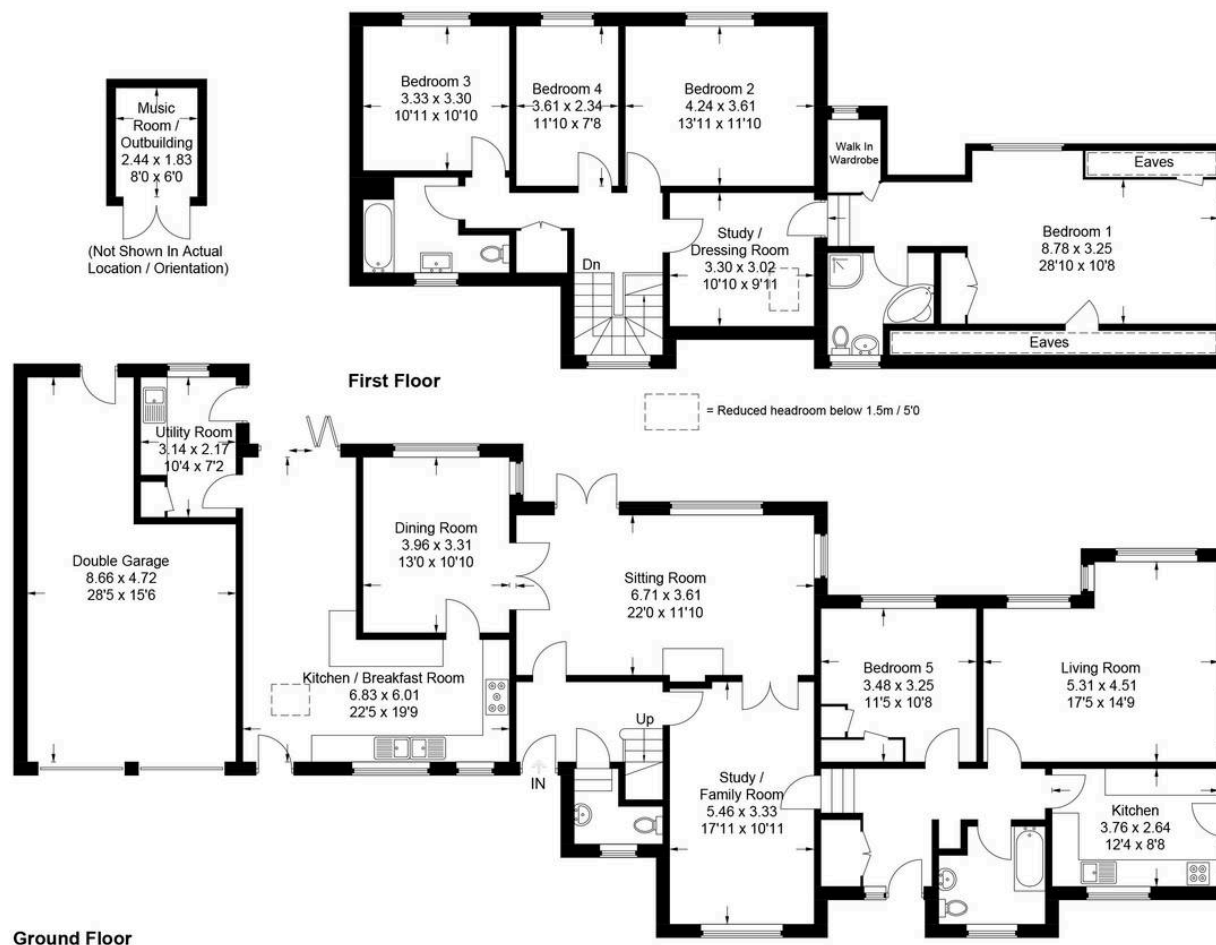
Council Tax Band: G. (Annexe is band A)

Tenure Freehold

Council Tax band: TBD

Tenure: Freehold





Approximate Gross Internal Area = 299.9 sq m / 3,228 sq ft
(Including Garage)

This plan is for layout guidance only. Not drawn to scale unless stated. Windows and door openings are approximate. Whilst every care is taken in the preparation of this plan, please check all dimensions, shapes and compass bearings before making any decisions reliant upon them.
© CJ Property Marketing Ltd Produced for Tim Russ & Company

Tim Russ and Company

Tim Russ Ltd, 1 High Street - HP27 0AE

01844 275522 • p.risborough@timruss.co.uk • timruss.co.uk/

