



Staddle Stones New Road, Princes Risborough - HP27 0JJ
£200,000



Staddle Stones New Road

Princes Risborough, Princes Risborough

- CLOSE TO TOWN
- OPEN PLAN LIVING
- NO ONWARD CHAIN
- ONE BEDROOM
- BATHROOM



9 Staddle Stones New Road

Princes Risborough, Princes Risborough

Situated in the most convenient location a short level stroll to shops and amenities is this one bedroom ground floor flat offered with no onward chain.

The accommodation comprises communal hallway to an open plan kitchen/reception room with a hallway benefitting from storage cupboards, leading to the bedroom with wardrobes and bathroom fitted in a white suite. The property offers both gas central heating and double glazing.

There is residents parking to the front and communal garden to the rear.

Service charge - £600 per year

Ground rent - £100 per year

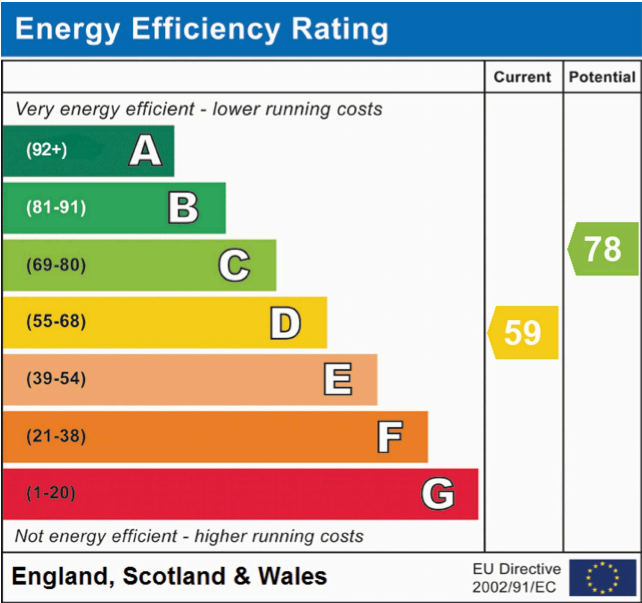
Leasehold

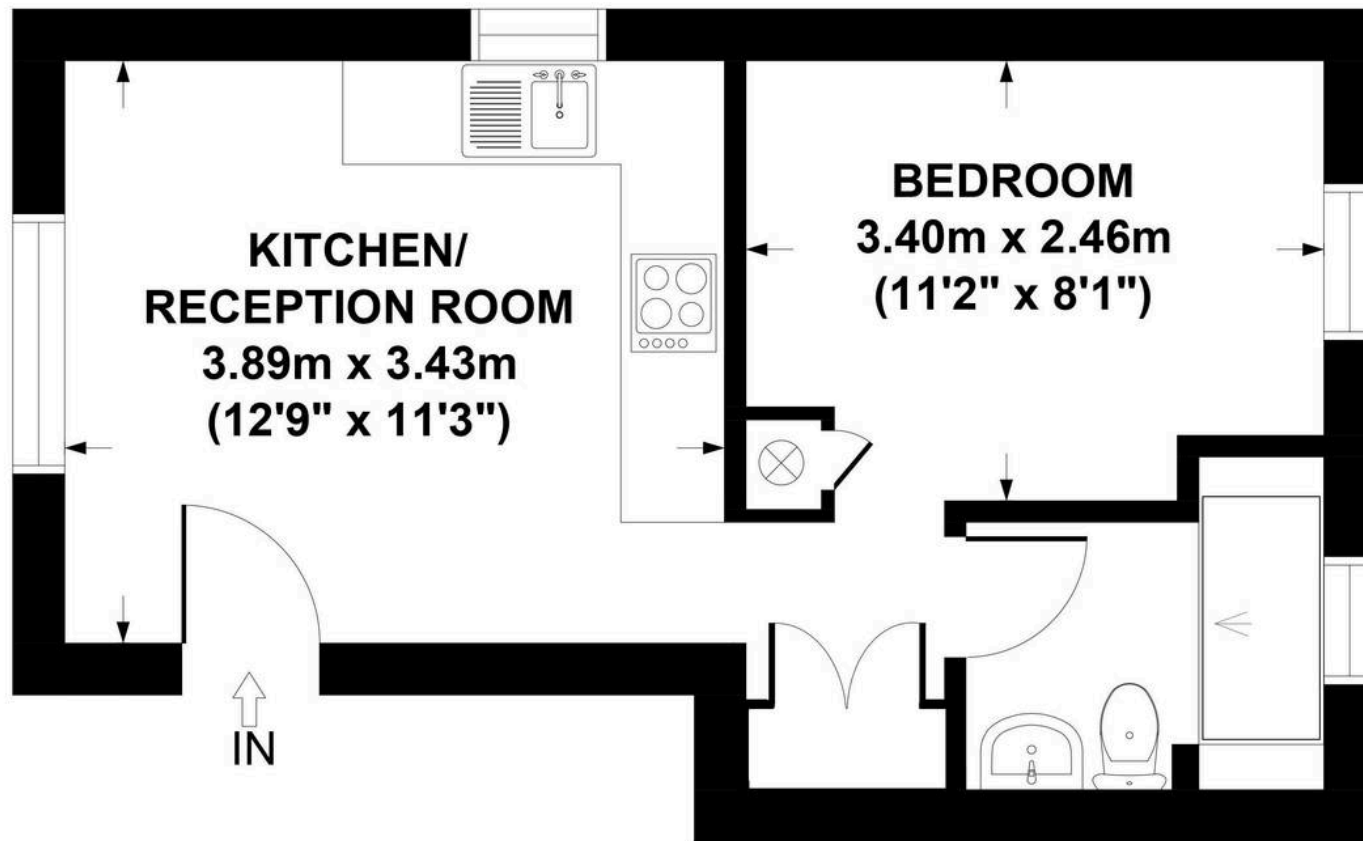
Council Tax band: D

Tenure: Leasehold

EPC Energy Efficiency Rating: D

EPC Environmental Impact Rating:





FLOOR PLAN IDENTIFICATION PURPOSES ONLY -NOT TO SCALE

Tim Russ and Company

Tim Russ Ltd, 1 High Street - HP27 0AE

01844 275522 • p.risborough@timruss.co.uk • timruss.co.uk/



TIM RUSS
& Company