



James *J* LaurenceTM
Sales and Lettings

APARTMENT 202, LUDGATE LOFTS APARTMENTS, 17
LUDGATE HILL, JEWELLERY QUARTER, BIRMINGHAM CITY
CENTRE, B3 1DW ASKING PRICE OF £269,950





DESCRIPTION

****EWS1 FORM GRANTED**** A spectacular 957 Sq. Ft., two bedroom, two bathroom loft apartment, located on the first floor in the sought after Ludgate Lofts development located just off St Paul's Square in the Jewellery Quarter. The property boasts high ceilings, exposed brickwork and picturesque windows. The property briefly comprises:- of an open plan living & kitchen area kitchen, master bedroom, double second bedroom with en-suite, family shower room and secure, allocated parking.

A must view to avoid disappointment.

ENTRANCE HALL

5'9 (Max)" x 11'8 (Max)" (1.75m x 3.56m)

OPEN PLAN LIVING & KITCHEN AREA

19'3 (Max)" x 26'6 (Max)" (5.87m x 8.08m)

MASTER BEDROOM

10'6 (Max)" x 12'3 (Max)" (3.2m x 3.73m)

SHOWER ROOM

11'8" x 4'6" (3.56m x 1.37m)

GUEST BEDROOM

12'11 (Max)" x 16'5" (3.94m x 5m)

BATHROOM

5'8" x 4'8" (1.73m x 1.42m)

BED DECK/STORAGE

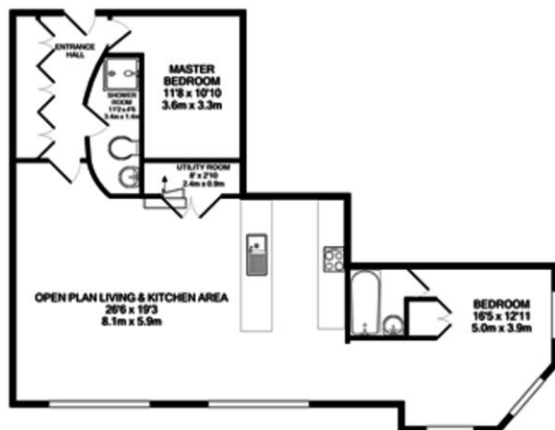
PARKING

The property boasts one secure and allocated parking space.

AREA

The property is located in the heart of Birmingham's Jewellery Quarter, just off St Paul's Square and close to the canal towpaths.

The Jewellery Quarter is a designated conservation area and proposed World Heritage Site and is already a prestigious and highly desired part of Birmingham. It is experiencing further development as some of the old factories are converted into apartments, restaurants and shops. It is only a short distance to all that Birmingham City Centre has to offer including the Colmore Business District.



GROUND FLOOR



1ST FLOOR

TOTAL APPROX. FLOOR AREA 957 SQ.FT. (88.9 SQ.M.)
Whilst every attempt has been made to ensure the accuracy of the floor plan contained herein, measurements of doors, windows, rooms and any other items are approximate and no responsibility is taken for any error, omission, or mis-statement. This plan is for illustrative purposes only and should be used as such by any prospective purchaser. The services, systems and appliances shown have not been tested and no guarantee as to their operability or efficiency can be given.
Made with Neotoma (2021)

