



**Oliver
Minton**
Sales & Lettings

**56 Parkfields,
Roydon**

CM19 5JB

Price Guide £659,995

A beautifully maintained and extended four bedroom semi-detached home, ideally positioned within comfortable distance of Roydon village High Street, main-line station and primary school. Offering a perfect balance of modern interiors, A family-friendly layout, and a superb larger than average garden. An exceptional opportunity to acquire this super 'turn-key' property.



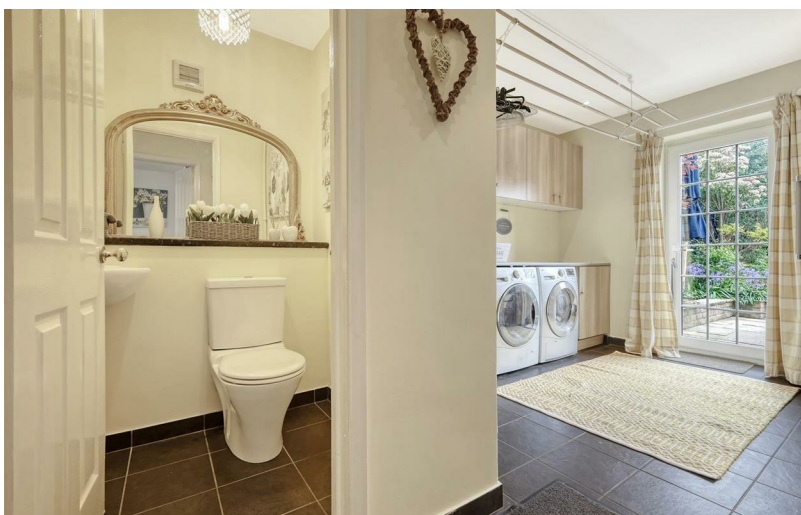


Location

Roydon is a highly sought after commuter village set on the Hertfordshire/Essex border which boasts plenty of village amenities. The pretty village green is bordered by attractive period homes and a small High Street runs through the village, offering a convenience store/post office, chemist, two pubs/restaurants, a regarded Primary School and a main-line station. There is also a well-used village hall, recreation field and tennis club, open countryside on your doorstep and beautiful walks along the River Stort towpath.

The property is ideally located, within comfortable distance of Roydon train station serving London Liverpool Street in approximately 33 minutes and Stratford in around 40 minutes. Services to Tottenham Hale can take as little as 16 minutes providing a fast connection to the Victoria Line Underground. Services to Bishops Stortford for connections to London Stansted Airport take around 18 minutes and an hourly service to Cambridge takes approximately 55 minutes.

The M11, M25 and the A10 are also within a comfortable distance for travel by road.



The Property

This immaculately presented four-bedroom semi-detached home is conveniently situated for all village amenities including the High Street, primary school and Roydon main-line station serving London Liverpool Street.

Having been in the same ownership for over three decades, it is a real credit to the current owners, having been thoughtfully extended and improved over the years to provide a superb and beautifully presented 'ready-made home' with an excellent layout for a growing family.

There is further potential to possibly create annexe style accommodation, ideal for multi-generational living, by converting the garage space and rooms behind, if required.

The sleek, modern kitchen is designed with both style and practicality in mind, fully fitted with high-end appliances, ample storage and granite work surfaces, with a large island/breakfast bar, comfortably seating three/four people for informal eating and socialising. The bright and airy living room stretches across the full width of the house, flowing seamlessly into the spacious dining room.

A large utility room, guest cloakroom and doors giving access to the integral garage complete the ground floor.

Upstairs, there are four generously sized bedrooms, including a spacious principal bedroom, with a modern shower room adjacent and a luxury family bathroom.

Wide doors open to the rear of the property to connect the indoor space to the outside. A paved garden terrace that sits under a modern, covered pergola, is just perfect for outside dining. The beautifully tended and mature rear garden is ideal for both entertaining and family life.

To the front, there is a wide block paved driveway, suitable for parking several vehicles which in turn leads to the larger than average integral garage.

Accommodation

Front door opening to:

Hall

Stairs rising to first floor. Under stairs storage cupboard. Vertical radiator. Quality laminate flooring.

Dining Room 3.95m x 3.48m (12'11" x 11'5")

Open plan to the hall and living room. Quality wood laminate flooring.

Living Room 6.83m x 3.27m (22'4" x 10'8")

Fabulous light and airy room spanning the full width of the house with wide doors opening to the under cover garden terrace. Twin light tunnels providing further natural light. Two vertical radiators. Quality laminate flooring.



Kitchen/Breakfast Room 5.94m x 3.62m (19'5" x 11'10")

Superb kitchen fitted with contemporary high gloss wall and base cabinets with complementary granite work surfaces and up-risers. Inset sink and drainer. Integrated dishwasher. At the centre of the room is a large island unit with matching granite top to provide a breakfast bar capable of seating three or four people with ease. Inset 'Neff' induction hob with brushed steel cylindrical illuminated extractor fan and 'pop-up' electric sockets. To one side of the room there is a bank of cupboards that house an integrated tall fridge and matching freezer, together with three ovens that include: 'hide and slide' door conventional/steam oven with warming drawer, traditional fan oven and combination microwave oven. The kitchen also features 'kick-plate LED lighting, tiled floor and a modern vertical radiator. Door to garage and door to:

Inner Lobby

With door to garage, guest cloakroom and utility room.

Utility Room 2.94m x 2.94m (9'7" x 9'7")

Range of wall and base units with inset sink and drainer. Spaces for washing machine and tumble dryer. Plenty of extra space for storage. Door to garden

Guest Cloakroom

Low flush w.c. Wall mounted corner wash hand basin. Radiator. Tiled floor.



First Floor

Landing with double glazed window to front. Loft access hatch with pull down ladder. Loft has light and is boarded. Door to airing cupboard and additional recessed storage cupboard. Radiator.

Bedroom 5.49m x 3.62m (18'0" x 11'10")

Dual aspect double glazed windows to side and rear. Radiator.



Shower Room 2.04m x 1.90m (6'8" x 6'2")

Fitted with a modern suite with complementary tiling to walls and floor: Double size walk-in shower with sliding glazed screen. Vanity wash hand basin with drawers below. Low flush w.c. Chrome heated towel rail. Double glazed frosted window.

Bedroom 3.46m x 3.20m (11'4" x 10'5")

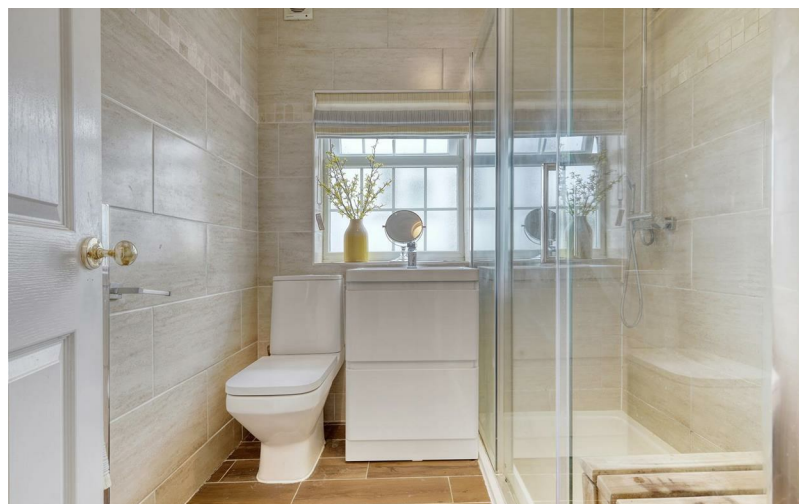
Double glazed window to rear. Radiator.

Bedroom 3.80m x 3.61m (12'5" x 11'10")

Double glazed window to rear. Radiator.

Bedroom 2.67m x 2.36m (8'9" x 7'8")

Double glazed window to front. Radiator. Recessed storage cupboard.





Bathroom 2.72m x 1.79m (8'11" x 5'10")

Fitted with a modern white suite: Large, deep panel enclosed bath with central mixer tap. Low flush w.c. Vanity wash hand basin with drawers below. Chrome heated towel rail. Double glazed frosted window.

Exterior

To the front of the house is a wide, block paved drive suitable for several vehicles that in turn leads to the garage.

Garage 6.20m x 2.97m (20'4" x 9'8")

With roller door and power and light connected. Wall mounted 'Vaillant' gas fired boiler. Personal doors opening to kitchen and utility.

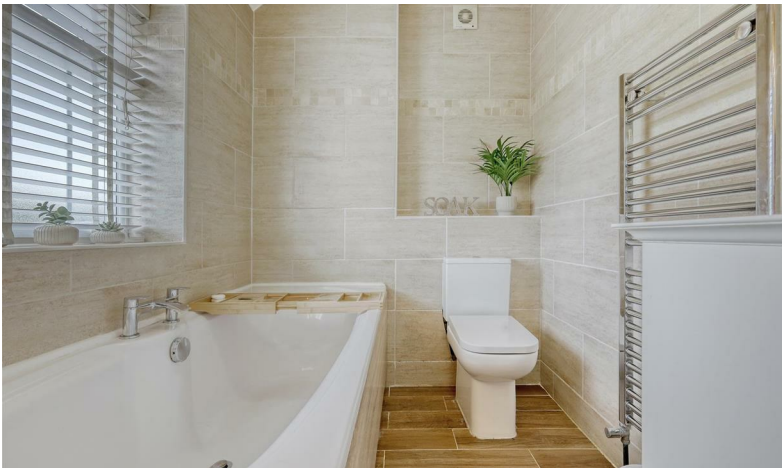
Rear Garden

A beautiful, private garden completes this fabulous home, a wonderful outside space for families and entertaining alike. To the immediate rear is a wide paved terrace that benefits from being under a modern pergola with a glazed roof, that allows you enjoy outdoor living, no matter the weather. There is also space for a hot tub (which can be available by separate negotiation. Low steps take you up to a well tended lawn with mature shrub and flower borders. To the far rear of the garden is another raised patio/seating area.

Services

All main services connected. Gas central heating via radiators.

Broadband & mobile phone coverage can be checked at <https://checker.ofcom.org.uk> ('Gigaclear' connected)

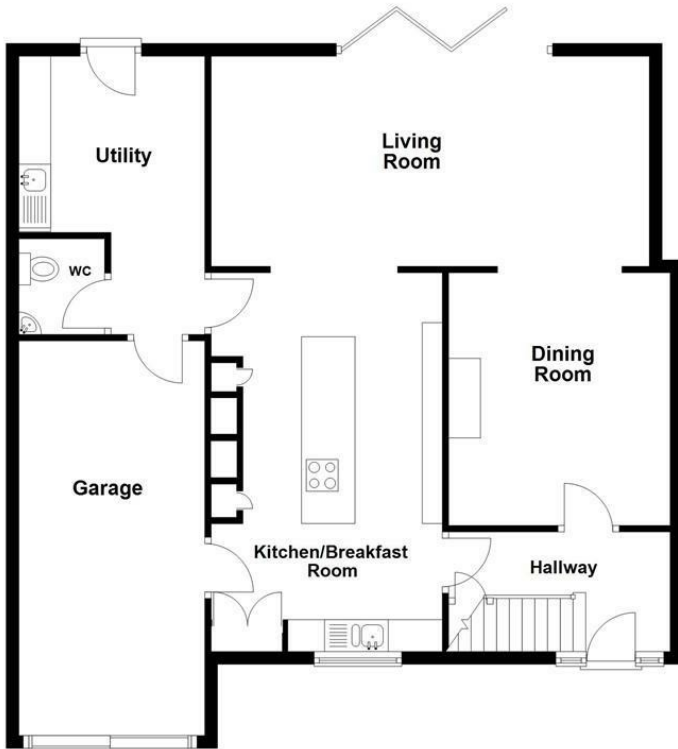


MORTGAGE ADVICE

Through our mortgage brokers Alison George and Panicos Makri of Mortgage & Money Management Ltd, we are able to offer INDEPENDENT mortgage advice, with NO OBLIGATION. Alison and Pani are also independent for all protection needs, allowing them to review your life assurance and critical illness policies to ensure you have the best deal! They can be contacted at our Puckeridge Office on 01920 412600. Please feel free to call them for any advice or quotations required. Your home is at risk if you do not keep up payments on a mortgage or loan secured against it. Mortgage & Money Management Ltd are directly authorised by the Financial Conduct Authority no. 452616

Ground Floor

Approx. 98.2 sq. metres (1056.8 sq. feet)



First Floor

Approx. 77.5 sq. metres (833.8 sq. feet)



Total area: approx. 175.6 sq. metres (1890.6 sq. feet)

This floor plan has been created by a third party and should be used as a general outline for guidance only. Any areas, measurements or distances quoted are approximate and any intending purchaser or lessee should satisfy themselves by inspection, searches, enquiries and/or full survey as to the correctness of each statement. We accept no responsibility or liability for any loss whatsoever that may arise as a result of this plan and the information contained within.

© @modephoto.uk | www.modephoto.co.uk
Plan produced using PlanUp.™

Parkfields

Tenure: Freehold

Council Tax Band: D

Viewing Arrangements:

Strictly by appointment

14 High Street, Stanstead Abbots, Hertfordshire, SG12 8AB

01920 412600

Email: sales@oliverminton.com

View all our properties at www.oliverminton.com

Energy Efficiency Rating		
	Current	Potential
Very energy efficient - lower running costs		
(92 plus) A		
(81-91) B		
(69-80) C	72	84
(55-68) D		
(39-54) E		
(21-38) F		
(1-20) G		
Not energy efficient - higher running costs		
England & Wales	EU Directive 2002/91/EC	

NOTICE: Whilst every effort has been made to ensure the accuracy of these sales details, they are for guidance purposes only and prospective purchasers or lessees are advised to seek their own professional advice as well as to satisfy themselves by inspection or otherwise as to their correctness.

No representation or warranty whatever is made in relation to this property by Oliver Minton or its employees, nor do such sales details form part of any offer or contract.