



£1,400 PCM 11 Uphill Road | Horfield | Bristol | BS7 9RA

www.kendallharper.com | lettings@kendallharper.com

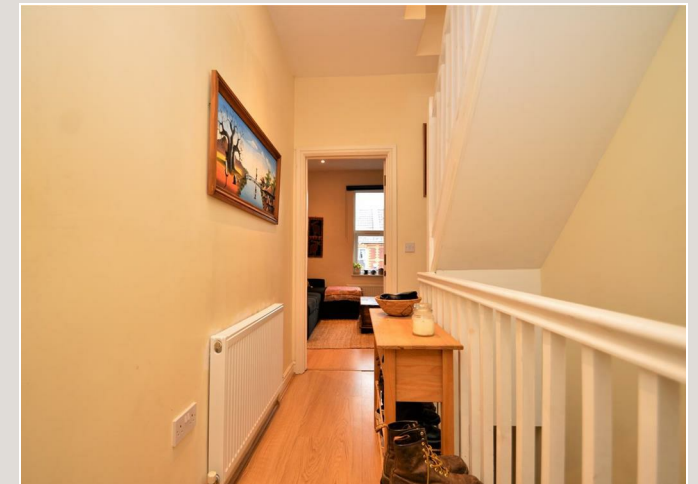
Kendall Harper

A well-presented two bedroom maisonette in a sought after location just off Gloucester Road / Ashley Down Road and very convenient for travel into and out of Bristol City Centre and the surrounding areas.

The accommodation briefly comprises a good size lounge with a modern open plan kitchen, two double bedrooms (one is a loft conversion) and a modern four piece bathroom suite with a bath and a separate shower cubicle.

The property also benefits from double glazing and gas central heating. Available early June 2025 and viewings are highly recommended!





Energy Efficiency Rating		
	Current	Potential
Very energy efficient - lower running costs		
(92 plus) A		74
(81-91) B		
(69-80) C		
(55-68) D	56	
(39-54) E		
(21-38) F		
(1-20) G		
Not energy efficient - higher running costs		
England & Wales		
EU Directive 2002/91/EC		

These particulars, whilst believed to be accurate, are set out as a general outline only for guidance and do not constitute any part of an offer or contract. Intending purchasers should not rely on them as statements of representation of fact, but must satisfy themselves by inspection or otherwise as to their accuracy. No person in this firm's employment has the authority to make or give any representation or warranty in respect of the property.

