



**£900 Per Month** The Parade, 2 Chapel Road | Bishopsworth | Bristol | BS13 7DN

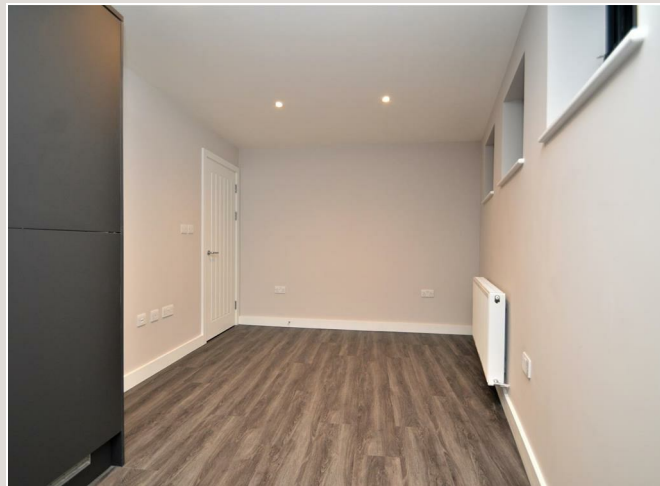
[www.kendallharper.com](http://www.kendallharper.com) | [lettings@kendallharper.com](mailto:lettings@kendallharper.com)

**Kendall Harper**

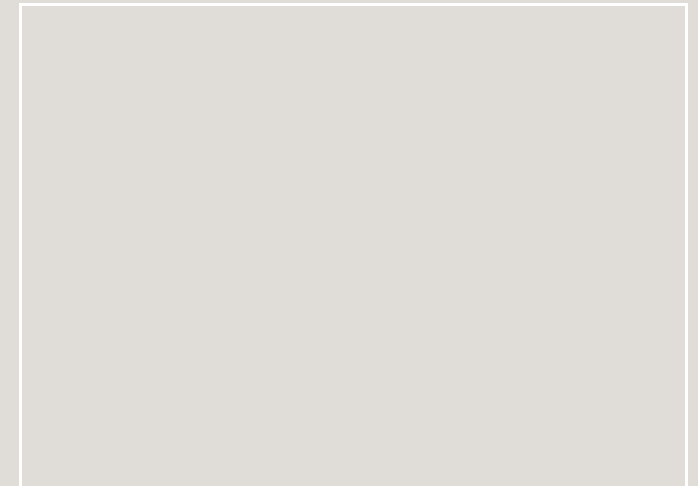
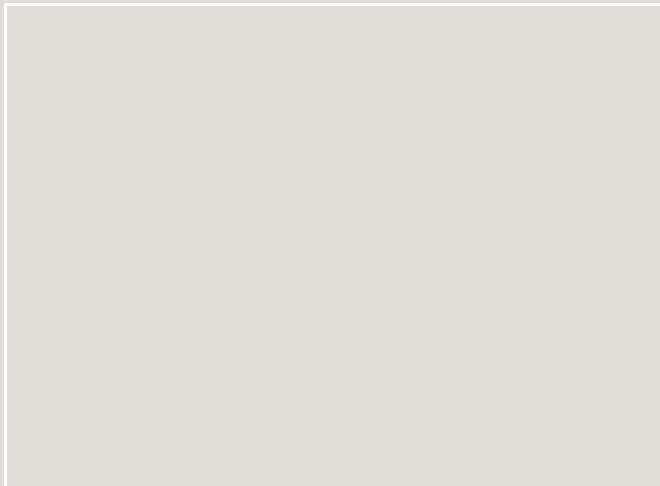
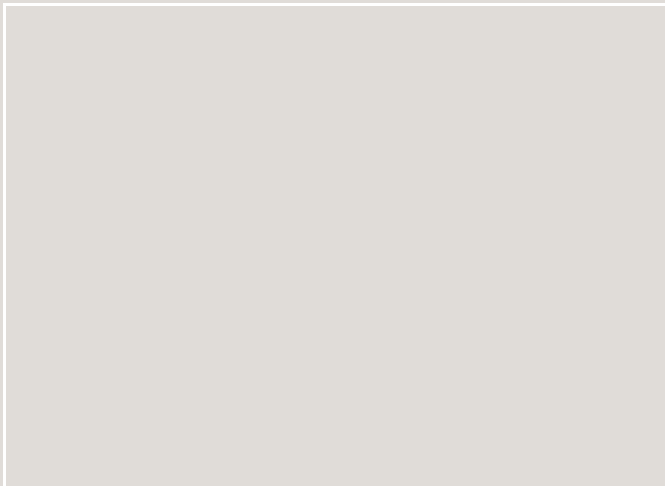
A superb one bedroom apartment situated on the ground floor of this recently built development in Bishopsworth.

The accommodation briefly comprises an entrance hall leading to an open plan lounge/kitchen/diner with a modern fitted kitchen complete with integrated appliances, a spacious double bedroom and modern shower room.


The property benefits from double glazing and gas central heating. Viewings are highly recommended.





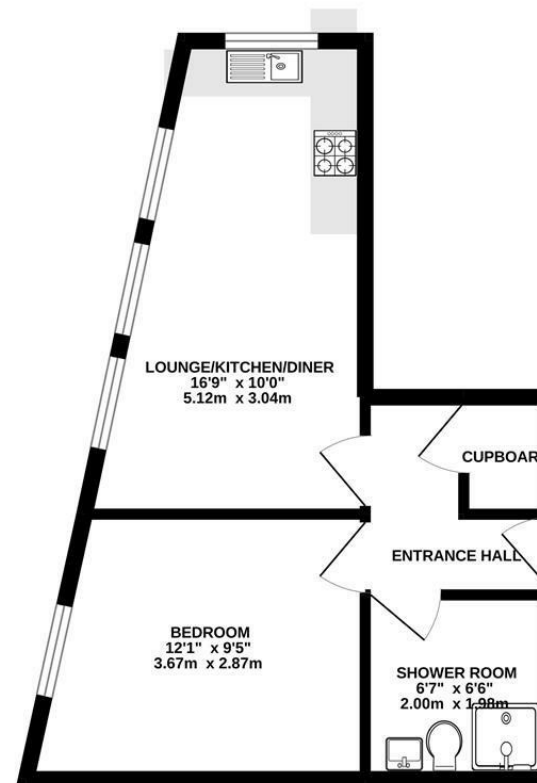


#### Energy Efficiency Rating

	Current	Potential
Very energy efficient - lower running costs		
(92 plus) <b>A</b>		
(81-91) <b>B</b>		
(69-80) <b>C</b>		
(55-68) <b>D</b>		
(39-54) <b>E</b>		
(21-38) <b>F</b>		
(1-20) <b>G</b>		
Not energy efficient - higher running costs		
<b>England &amp; Wales</b>	EU Directive 2002/91/EC	

These particulars, whilst believed to be accurate, are set out as a general outline only for guidance and do not constitute any part of an offer or contract. Intending purchasers should not rely on them as statements of representation of fact, but must satisfy themselves by inspection or otherwise as to their accuracy. No person in this firm's employment has the authority to make or give any representation or warranty in respect of the property.

GROUND FLOOR  
329 sq.ft. (30.6 sq.m.) approx.



TOTAL FLOOR AREA : 329 sq.ft. (30.6 sq.m.) approx.

Whilst every attempt has been made to ensure the accuracy of the floorplan contained here, measurements of doors, windows, rooms and any other items are approximate and no responsibility is taken for any error, omission or mis-statement. This plan is for illustrative purposes only and should be used as such by any prospective purchaser. The services, systems and appliances shown have not been tested and no guarantee as to their operability or efficiency can be given.  
Made with Metropix ©2022