



£1,600 PCM Beech Road | Horfield | Bristol | BS7 8RP

www.kendallharper.com | lettings@kendallharper.com

Kendall Harper

A three bedroom Victorian terraced house situated on this quiet road in Horfield and close to the local amenities of the ever popular Gloucester Road.

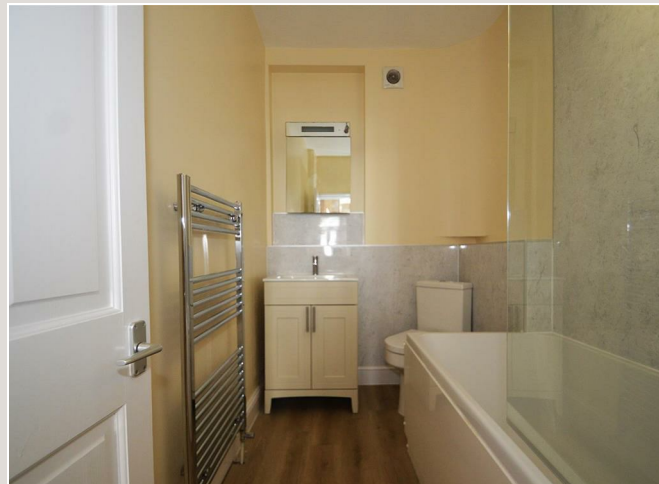
The house is modern and well-presented throughout and the accommodation comprises an entrance hall, a living room with bay window, a dining room which is open plan to a modern fitted kitchen with appliances and a modern family bathroom to the ground floor.


On the first floor there is a large master bedroom with storage cupboard and large bay window, a further double bedroom with a storage cupboard and a single bedroom/home working space.

To the rear of the property there is a low maintenance private enclosed garden. The house has just been redecorated throughout and benefits from new flooring throughout. Further benefits include gas central heating and double glazing.

Suitable for a family or a professional couple and viewings are highly recommended!





Energy Efficiency Rating		
	Current	Potential
Very energy efficient - lower running costs		
(92 plus) A		
(81-91) B		
(69-80) C		
(55-68) D		
(39-54) E		
(21-38) F		
(1-20) G		
Not energy efficient - higher running costs		
	66	79
England & Wales	EU Directive 2002/91/EC	

These particulars, whilst believed to be accurate, are set out as a general outline only for guidance and do not constitute any part of an offer or contract. Intending purchasers should not rely on them as statements of representation of fact, but must satisfy themselves by inspection or otherwise as to their accuracy. No person in this firm's employment has the authority to make or give any representation or warranty in respect of the property.

