



£1,850 Per Month Georges Square | Redcliffe | Bristol | BS1 6LB

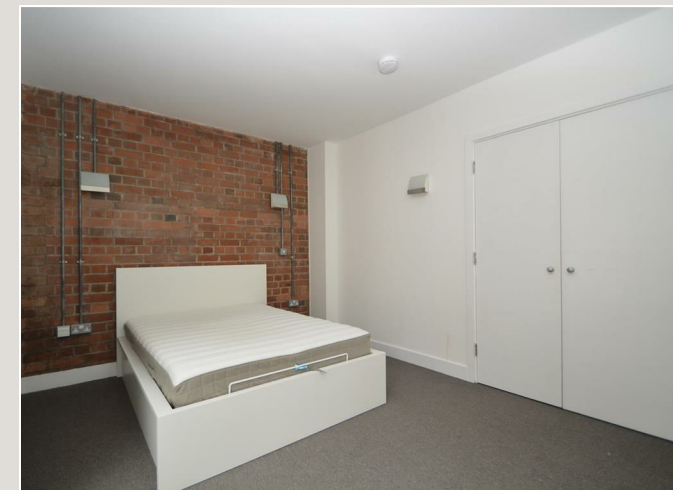
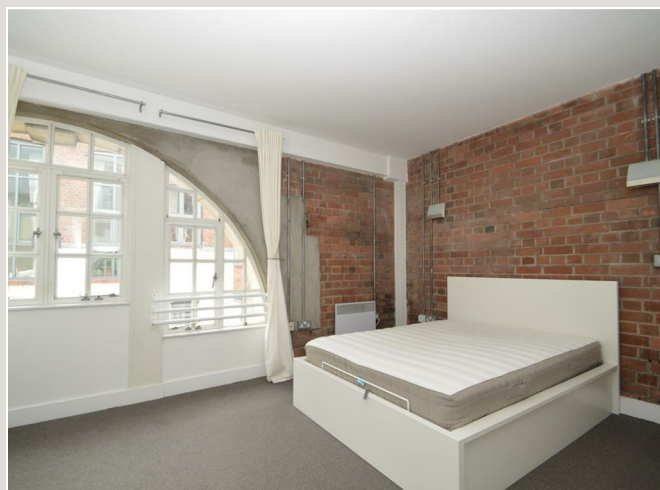
www.kendallharper.com | lettings@kendallharper.com

Kendall Harper


Apartment 14 The Tower is a trendy third floor apartment with industrial urban features, spacious bedrooms and living space, situated in the heart of Bristol's vibrant centre.

The apartment is accessed via a lift and the accommodation briefly comprises a spacious entrance hall with three storage cupboards, a master bedroom with exposed brick walls, a built in wardrobe and a modern en suite shower room, a further double bedroom, a modern family bathroom and a fantastic, large and open plan lounge/kitchen/diner with large windows and exposed brick walls, offering lots of light and living space.

To the outside the property benefits from an allocated off street parking space. Offered on a part furnished basis and suitable for a family, professional couple or two professional sharers. Viewings are highly recommended!





Energy Efficiency Rating		
	Current	Potential
<i>Very energy efficient - lower running costs</i>		
(92 plus) A		80
(81-91) B		
(69-80) C		
(55-68) D	53	
(39-54) E		
(21-38) F		
(1-20) G		
<i>Not energy efficient - higher running costs</i>		
England & Wales	EU Directive 2002/91/EC	

These particulars, whilst believed to be accurate, are set out as a general outline only for guidance and do not constitute any part of an offer or contract. Intending purchasers should not rely on them as statements of representation of fact, but must satisfy themselves by inspection or otherwise as to their accuracy. No person in this firm's employment has the authority to make or give any representation or warranty in respect of the property.

