

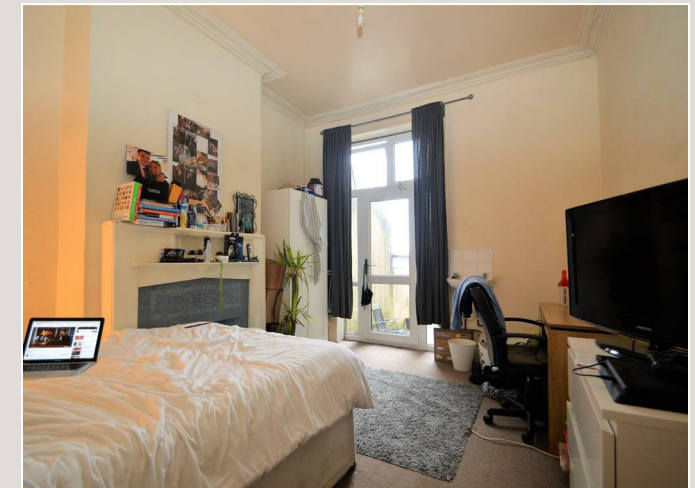


£4,200 PCM Ashley Down Road | Ashley Down | Bristol | BS7 9JZ

www.kendallharper.com | lettings@kendallharper.com

Kendall Harper

STUDENT PROPERTY - A spacious seven bed Victorian terraced property which is situated in a great location, close to the ever popular Gloucester Road and St Andrews Park. The accommodation comprises an entrance hall, spacious living room, a good sized downstairs bedroom, a fully fitted kitchen with appliances and a downstairs bathroom. On the first floor there are three good sized double bedrooms and a single bedroom as well as shower room and separate WC. On the top floor of the house there are two further double bedrooms. Further benefits include gas central heating, double glazing, a private garden and modern furniture throughout. Available on 12th August 2024 and viewings are highly recommended!





Energy Efficiency Rating		
	Current	Potential
<i>Very energy efficient - lower running costs</i>		
(92 plus) A		
(81-91) B		
(69-80) C		75
(55-68) D	56	
(39-54) E		
(21-38) F		
(1-20) G		
<i>Not energy efficient - higher running costs</i>		
England & Wales	EU Directive 2002/91/EC	

These particulars, whilst believed to be accurate, are set out as a general outline only for guidance and do not constitute any part of an offer or contract. Intending purchasers should not rely on them as statements of representation of fact, but must satisfy themselves by inspection or otherwise as to their accuracy. No person in this firm's employment has the authority to make or give any representation or warranty in respect of the property.

