



London Road
Leigh-On-Sea, SS9 2QG
£1,000 Per Calendar Month



London Road

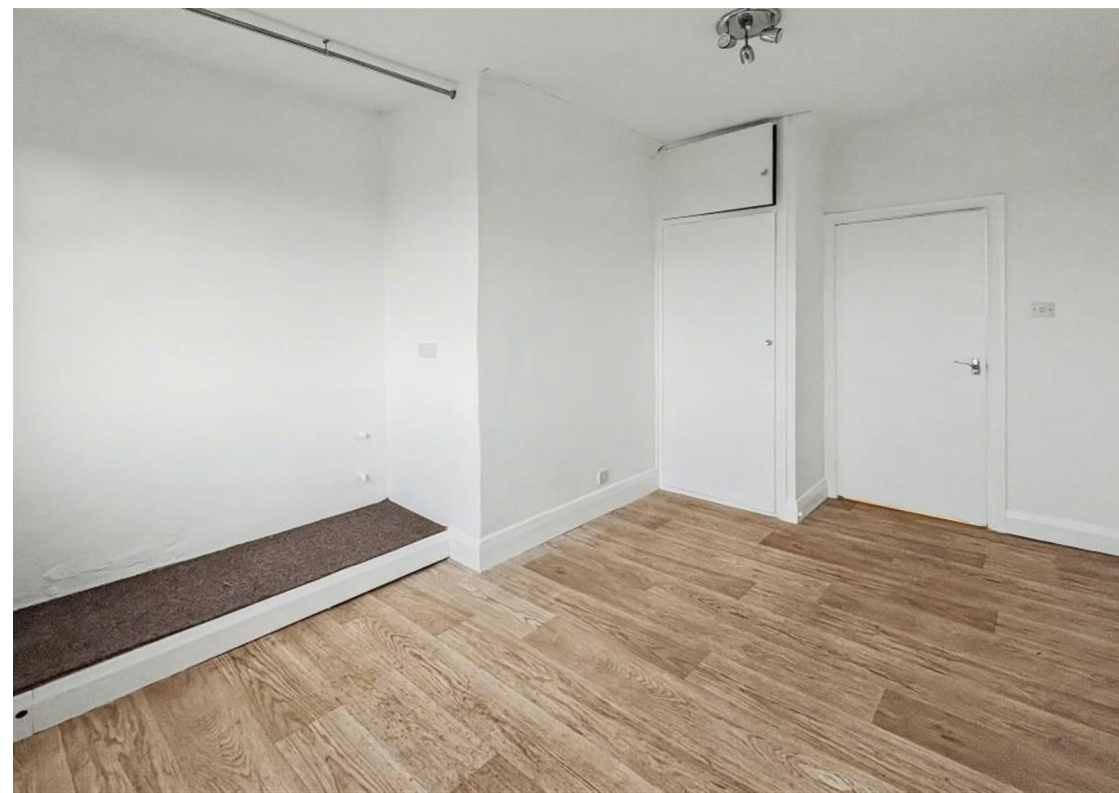
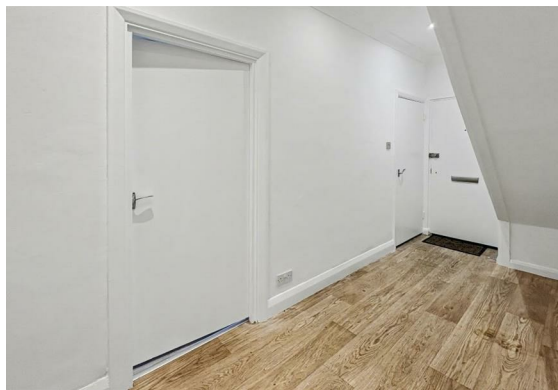
Leigh-On-Sea, SS9 2QG

Nestled in the vibrant heart of Leigh-On-Sea, this charming one-bedroom flat conversion on London Road offers a delightful blend of modern living and convenience. The property boasts a spacious reception room that provides a welcoming atmosphere, perfect for relaxation or entertaining guests. The large master bedroom is designed to be both comfortable and inviting, ensuring a restful retreat at the end of the day.

The flat has been newly painted throughout, presenting a fresh and contemporary feel. The modern kitchen is well-equipped, while the stylish bathroom adds a touch of luxury to your daily routine.

One of the standout features of this property is the off-road parking available for one vehicle, a rare find in such a bustling area. The location is superb, with easy access to a variety of shops, restaurants, and the A13, making commuting and daily errands a breeze.

This one-bedroom apartment is perfect for individuals or couples seeking a comfortable home in a lively community. With its prime location and modern amenities, it presents an excellent opportunity for those looking to enjoy the best of Leigh-On-Sea living.





Entrance Hall

Lounge

Kitchen

Master Bedroom

Bathroom

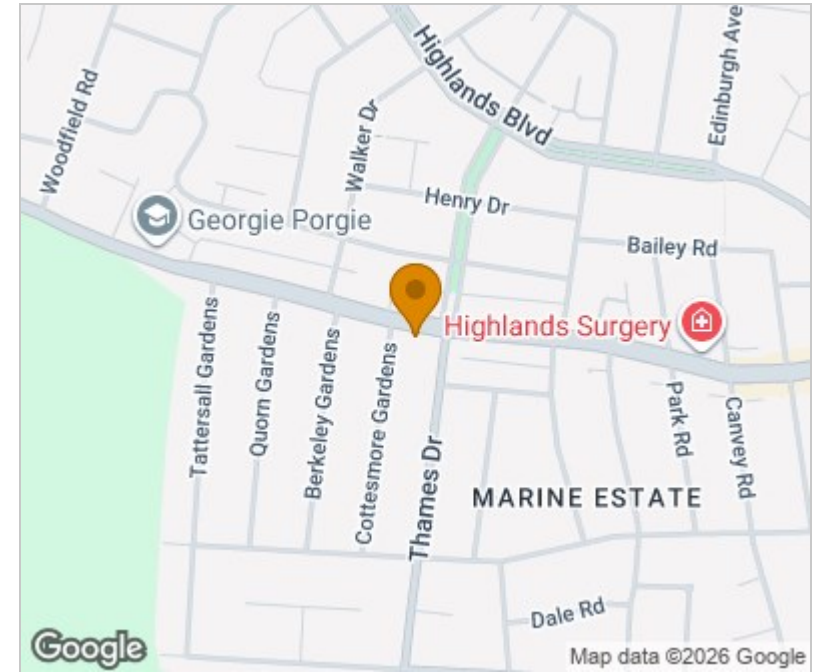
Shared Resident Parking

Floor Plan

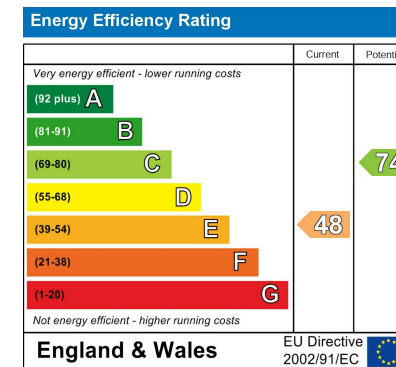


Please contact our office on 01702710555 if you wish to arrange a viewing appointment for this property or require further information.

Area Map



Energy Efficiency Graph



These particulars, whilst believed to be accurate are set out as a general outline only for guidance and do not constitute any part of an offer or contract. Intending purchasers should not rely on them as statements of representation of fact, but must satisfy themselves by inspection or otherwise as to their accuracy. No person in this firm's employment has the authority to make or give any representation or warranty in respect of the property.

