



Royal Terrace  
Southend On Sea, SS1 1DY

**£950 PCM**





## Royal Terrace

Southend On Sea, SS1 1DY

Nestled in the charming Royal Terrace of Southend On Sea, this first-floor flat presents an exceptional opportunity for those seeking a modern living space in a prime location. Turner Lettings is proud to offer this spacious one-bedroom apartment, which is just a stone's throw away from the vibrant Southend high street, the picturesque seafront, and a variety of local amenities.

Set within a beautifully maintained Grade II listed building, this property combines historical elegance with contemporary comfort. The flat features a well-appointed open-plan living area that seamlessly integrates a recently fitted kitchen, perfect for both entertaining and everyday living. The good-sized master bedroom provides a tranquil retreat, while the contemporary three-piece bathroom, complete with a shower over the bath.

Experience the best of Southend On Sea living in this delightful flat, where modern amenities meet historic charm.

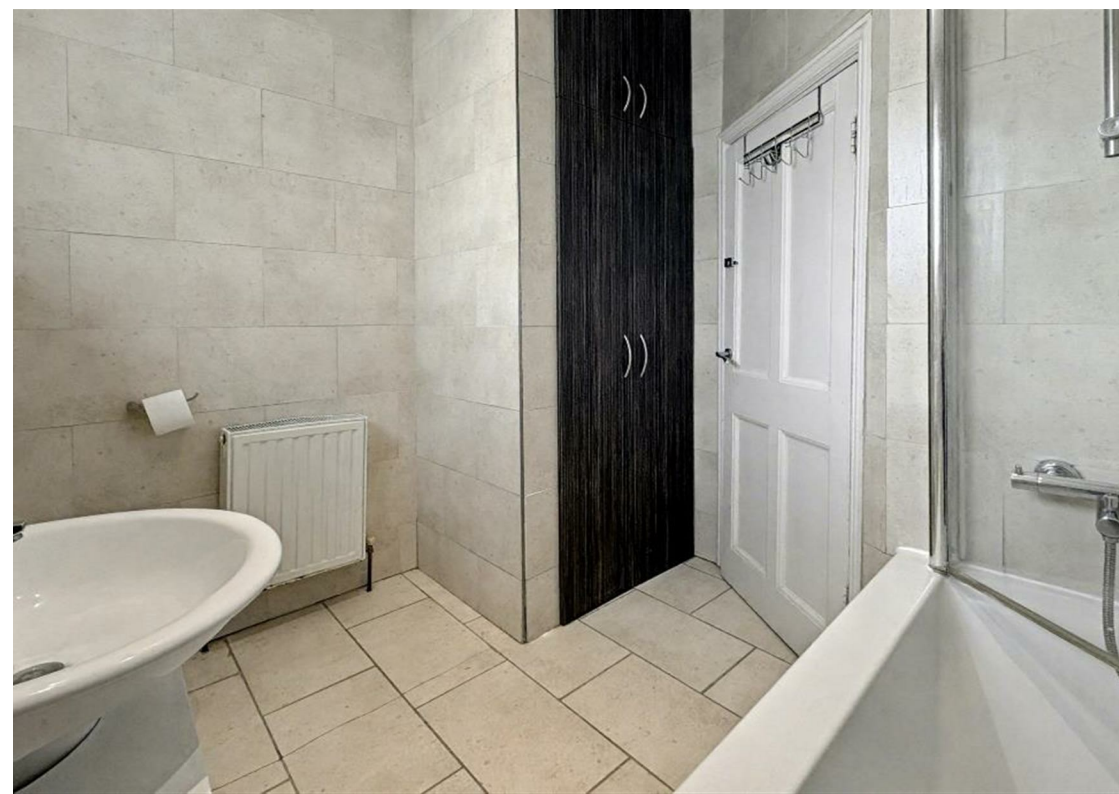
Communal Entrance

Hallway

Lounge/Kitchen  
14'00" x 13'00" (4.27 x 3.96)

Bedroom  
10'06" x 9'04" (3.20 x 2.84)

Family Bathroom







Floor Plan

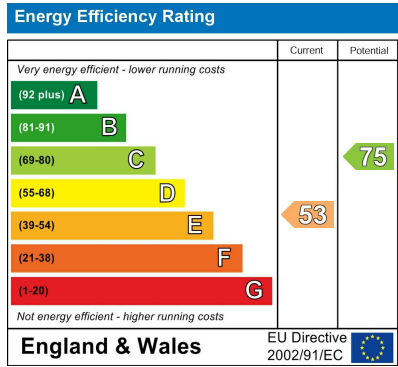


Please contact our office on 01702710555 if you wish to arrange a viewing appointment for this property or require further information.

Area Map



Energy Efficiency Graph



These particulars, whilst believed to be accurate are set out as a general outline only for guidance and do not constitute any part of an offer or contract. Intending purchasers should not rely on them as statements of representation of fact, but must satisfy themselves by inspection or otherwise as to their accuracy. No person in this firm's employment has the authority to make or give any representation or warranty in respect of the property.