



Portchester Court, Chalkwell Park Drive, Leigh-On-Sea, SS9 1NR

Offers in Excess of £160,000



ARE YOU LOOKING FOR A GROUND FLOOR RETIREMENT PROPERTY A STONES THROW FROM LEIGH BROADWAY?

Turner Sales are offering this one bedroom ground floor retirement property for over 65s in the popular Portchester Court. Situated on the ground floor, this spacious apartment provides the added bonus of direct access to a private balcony and communal gardens and internally offers a large lounge, fitted kitchen, modern shower room and double bedroom. There is a communal car park, residents social room and the property is being offered with no onward chain. Call us on 01702 710 555 to arrange a viewing.

Entrance

Via security door with access code and buzzer entry which leads to reception area, large communal lounge and entrance to the flat.

Internal Hallway

Smooth ceiling, storage cupboard, wood effect flooring, doors to accommodation.

Lounge

15'9 x 9'10 (4.80m x 3.00m)

Double glazed sliding patio doors leading to balcony and communal gardens, electric wall mounted radiator, wood effect flooring leading through to...

Kitchen

9'09 x 6'02 (2.97m x 1.88m)

Fitted with matching wall and base units with complementary work surface, inset stainless steel sink and drainer, built in oven with electric hob and extractor over, space and plumbing for washing machine and space for tall fridge freezer, storage cupboard, wood effect flooring.

Bedroom

11'10 x 9'10 (3.61m x 3.00m)

Double glazed window, electric wall mounted radiator, wood effect flooring.





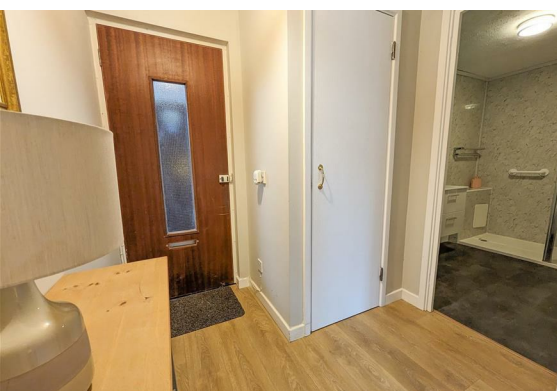
Shower Room

8'08 x 6'02 (2.64m x 1.88m)

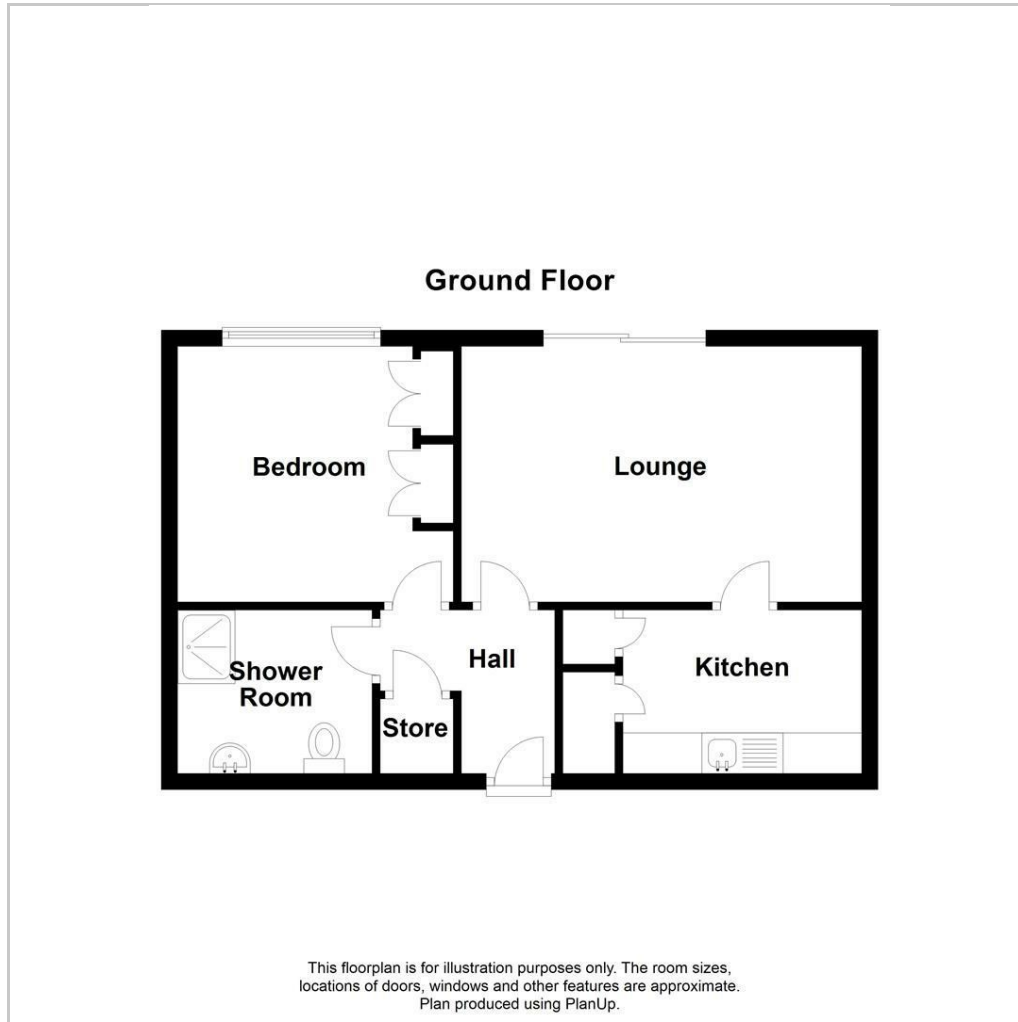
Fitted with a three piece suit comprising large walk in shower, wash hand basin in vanity unit with mixer tap and low level w/c with push button, extractor fan, towel radiator.

Agents Notes

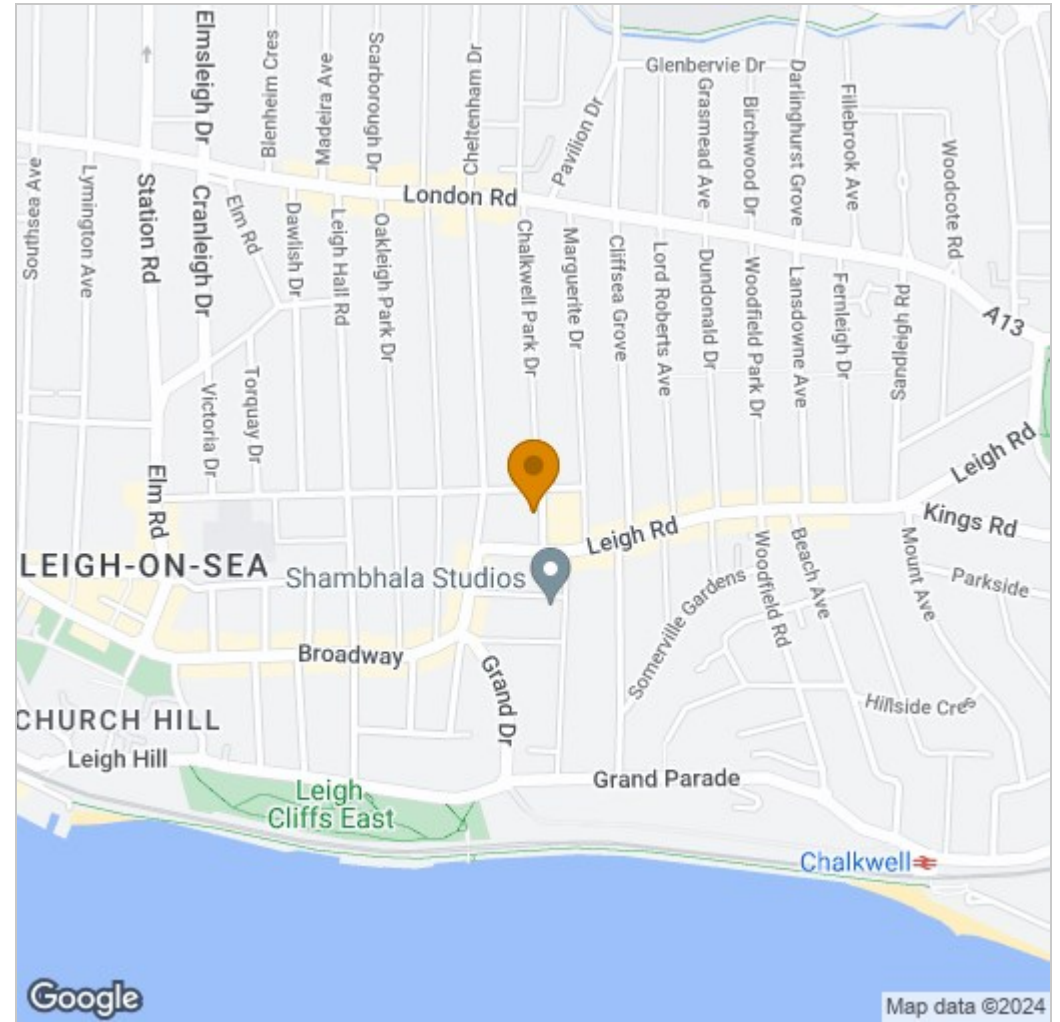
We have been advised that there are 64 years remaining on the lease, Service charge is £191 per month and Ground rent £5.83 per month. For over 65 years of age.



Floor Plan



Area Map



Please contact our Sales & Lettings Office on 01702710555 if you wish to arrange a viewing appointment for this property or require further information.

These particulars, whilst believed to be accurate are set out as a general outline only for guidance and do not constitute any part of an offer or contract. Intending purchasers should not rely on them as statements of representation of fact, but must satisfy themselves by inspection or otherwise as to their accuracy. No person in this firm's employment has the authority to make or give any representation or warranty in respect of the property.



34 Broadway, Leigh-on-Sea, Essex, SS9 1AJ
Tel: 01702710555 Email: info@turnerestates.co.uk turnerestates.co.uk