



Wine Close, E1W

£500,000

 1  1  1  C

- First Floor
- One Bedroom
- Open Plan Lounge / Kitchen

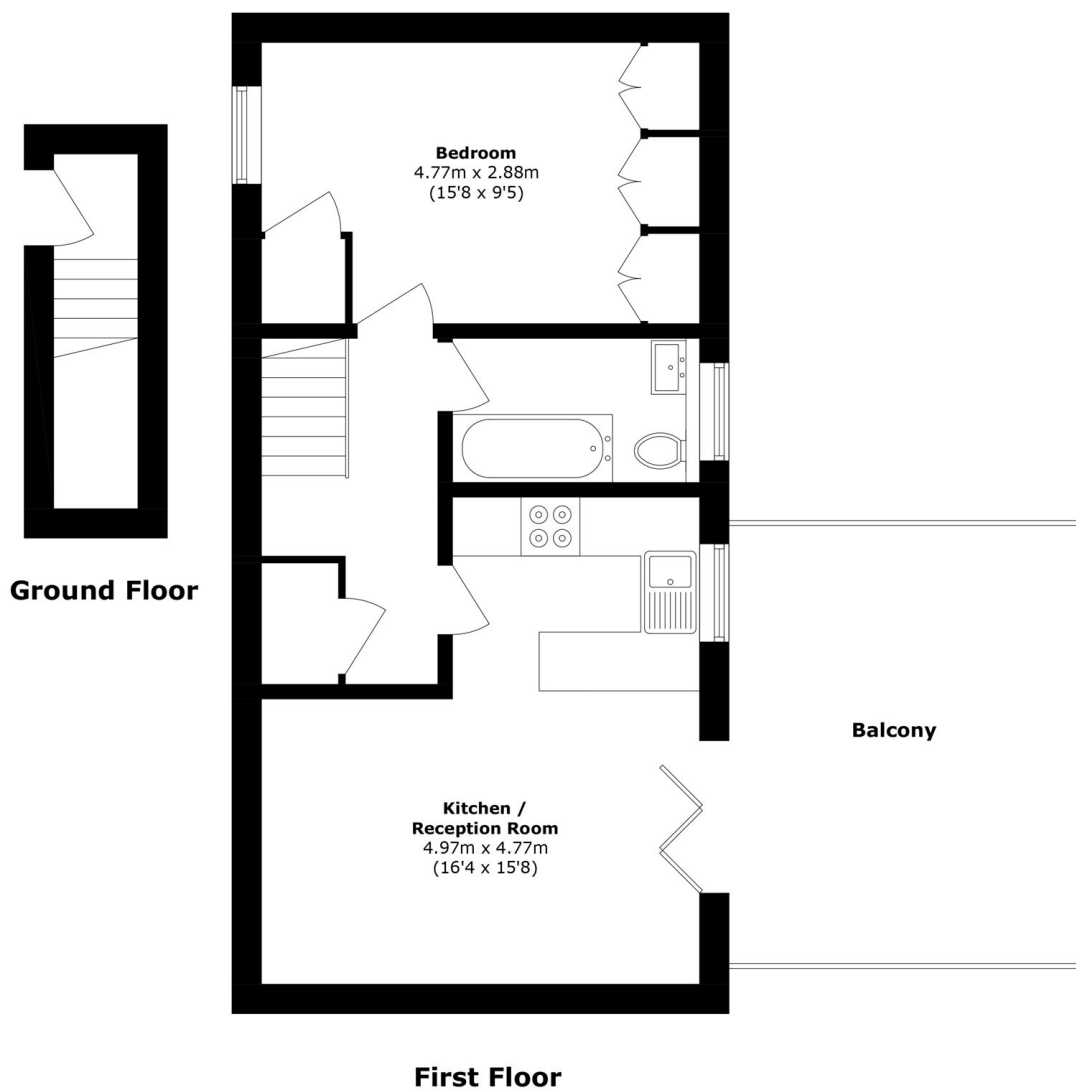
- Bi Folding Doors
- Terrace Facing Wapping Woods
- 0.3 Miles From Wapping Station



Ea2 are pleased to offer this immaculately presented one bedroom apartment on the first floor. The property benefits from an open plan Kitchen / Lounge with Bi Folding Doors onto a terrace overlooking Wapping Woods. The sellers have advised us that they are currently in the process of an enfranchisement claim to purchase a share of the freehold.

The property is located approximately 0.3 miles from Wapping Overground Station which offers access to the City, Canary Wharf & Shoreditch. Wapping Lane offers a wide selection of amenities including a Sainsburys Local, Butcher, Pharmacy and Post Office.





Total area (approx.): 46.0 sq. m (495.1 sq. ft)
Balcony area (approx.): 16.0 sq. m (172.2 sq. ft)

35A Wapping High Street,
London, E1W 1NR
020 7665 5589
ea2group.com