



The Highway, E1W

£475 Per week

 2  1  1  E

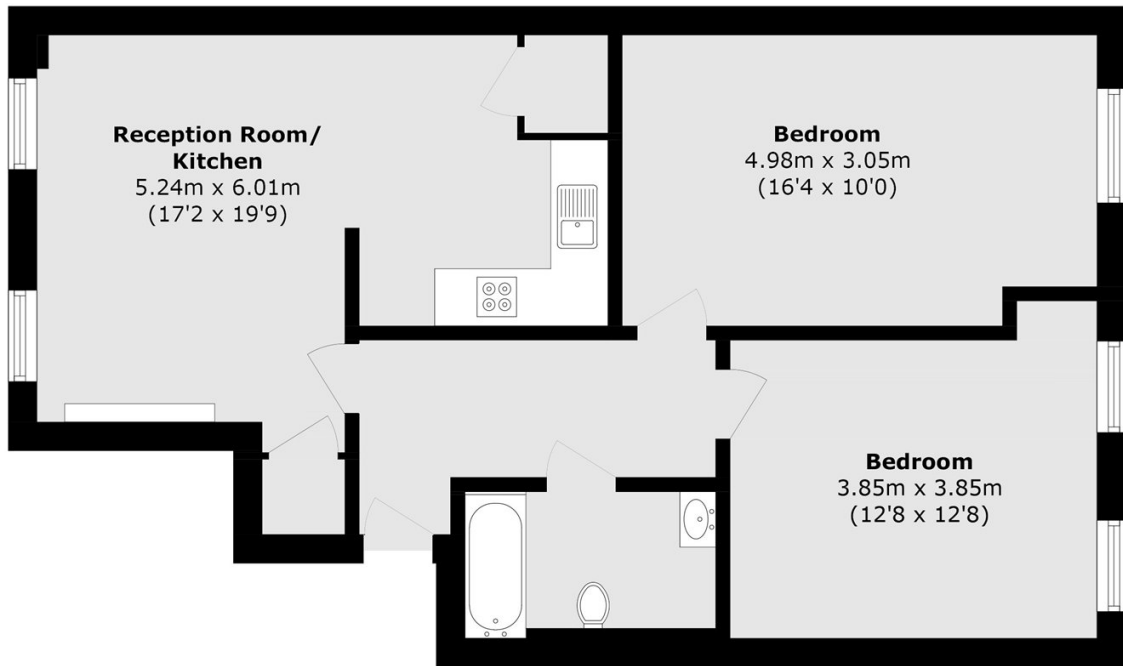
- Two Double Bedroom
- Under Floor Heating
- Concierge
- Bike Storage
- Communal Garden
- Parking Available



Two Bedroom apartment on the third floor of an exciting and vibrant development in Wapping. The apartment is finished to a high standard with wooden floors, under floor heating and contemporary bathroom and kitchen. The building also offers access to concierge and bike storage and is set around a beautiful communal garden. Parking is also available at separate negotiation.

Sovereign Court is an exciting development ideally located to provide an easy access to The City and Canary Wharf via a number of different transport links. Only a short walk from Wapping Overground Station, Tower Hill Stations, DLR links, and buses on the street for an easy access to the City, London Bridge, Canary Wharf or Shoreditch.





Total area (approx.): 62.7 sq. m (674.9 sq. ft)

35A Wapping High Street,
London, E1W 1NR
020 7702 3456
ea2group.com