



## Connaught Road, E16

£275,000

 2  1  1  C

- Two Bedroom Apartment
- Separate Kitchen
- Allocated Parking Space
- 900 + Year Lease
- Close to City Airport
- Chain Free

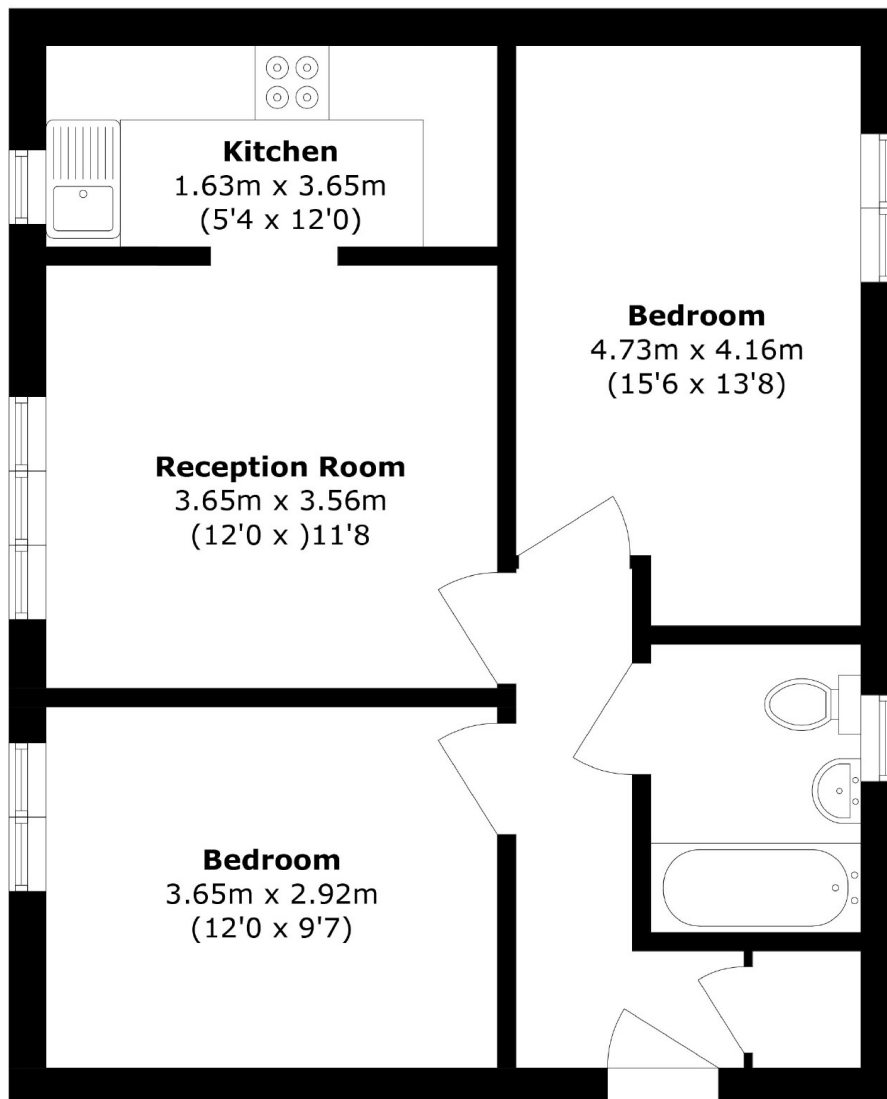


Ea2 are pleased to present this two double bedroom apartment located in North Woolwich. The property benefits from an allocated parking space which is in a gated car park. An ideal first time or buy to let investment purchase. Being offered Chain Free.

Located within 0.4 miles of City Airport which also has access to London City Airport DLR station offering access to Canary Wharf and the City. The property is approximately 1.6 miles from the campus of the University of East London.







Total area (approx.): 54.0 sq. m (581.2 sq. ft)

35A Wapping High Street,  
London, E1W 1NR  
020 7665 5589  
ea2group.com