



Ashton Street, E14

£290,000

 2  1  1  C

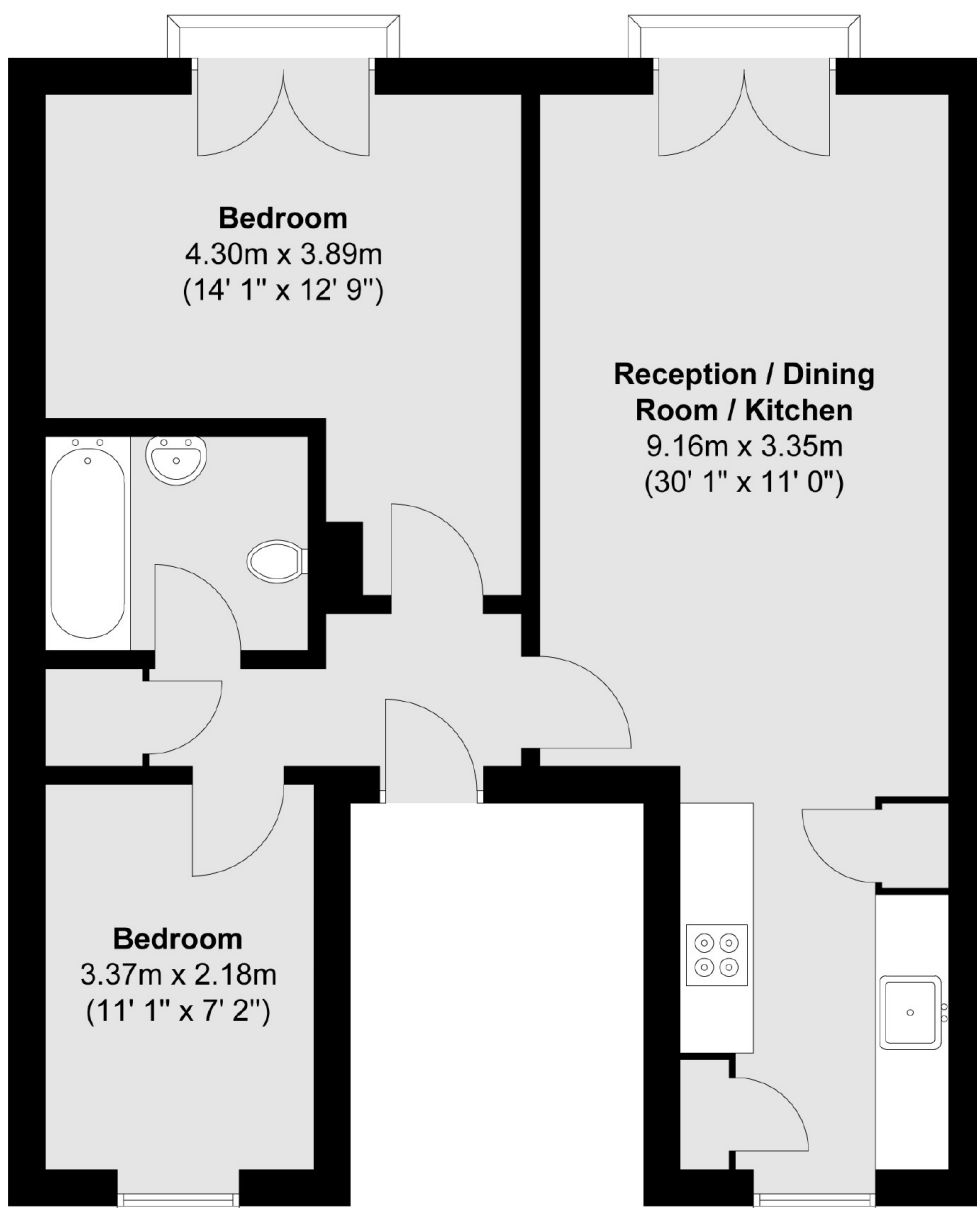
- Gated Development
- 2 Bedrooms
- 1 Bathroom
- Fitted Kitchen
- Close to Canary Wharf
- Buy to let Opportunity



A well-presented two-bedroom apartment located in the Delta Building development, just moments from Canary Wharf. Features a good size reception room, fitted kitchen, and a 'Juliet' style balcony. The two bedrooms are well-proportioned, and the apartment includes a contemporary bathroom suite. Situated within a gated complex. Agent note* This property is currently tenanted and under contract until 28th February 2026 and therefore only interested parties wishing to buy to let should apply.

Nearest Stations: All Saints DLR Station, Poplar DLR Station , Blackwall DLR Station, Canary Wharf Underground Station (Jubilee Line), Westferry DLR Station. Perfectly located for access to Canary Wharf, the City, and central London, this property offers convenience, comfort, and secure urban living.





Total area (approx.) : 56.4 sq. m (607 sq. ft)

35A Wapping High Street,
London, E1W 1NR
020 7665 5589
ea2group.com