



Jardine Road, E1W

£600,000

 2  1  1  B

- Direct River Views
- Balcony
- 2 Double Bedrooms
- Open Plan Kitchen
- Bathroom
- Allocated Parking Space

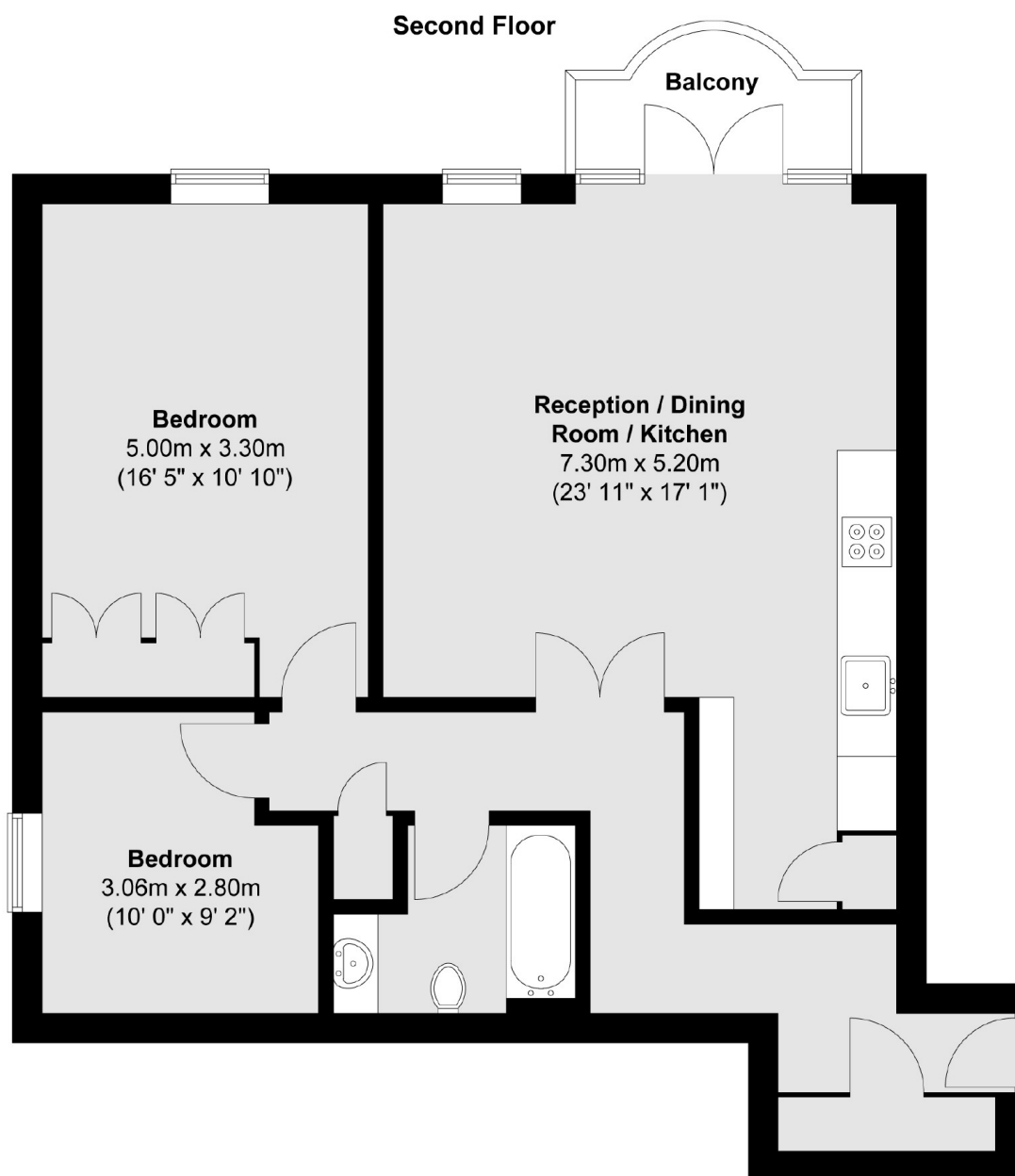


Enjoy superb River Thames views from this beautifully presented two-bedroom apartment, located in the sought-after Atlantic Wharf development. Boasting a private balcony with direct river vistas, the property features a bright and spacious reception room, an open-plan fully fitted kitchen, two well-proportioned double bedrooms, and a modern, recently updated bathroom. Additional benefits include an allocated parking space and access to a day porter, enhancing both convenience and security.

Perfectly positioned between Wapping and Limehouse, the apartment is just a short walk from Limehouse DLR station, offering swift connections to Bank, Canary Wharf, Stratford International, London City Airport, and Royal Greenwich. The C2C line also provides direct access to Fenchurch Street and the Essex coast, while the nearby Elizabeth Line from Canary Wharf extends connectivity across the capital. Set moments from the charming Narrow Street and scenic Limehouse Marina, the area also offers an abundance of green spaces within easy walking distance, blending riverside living with urban convenience.







Total area (approx.) : 74.7 sq. m (804 sq. ft)  
Total balcony area (approx.) : 3.3 sq. m (35 sq. ft)

35A Wapping High Street,  
London, E1W 1NR  
020 7665 5589  
ea2group.com