



White Horse Lane, E1

£710,000

 3  1  2  C

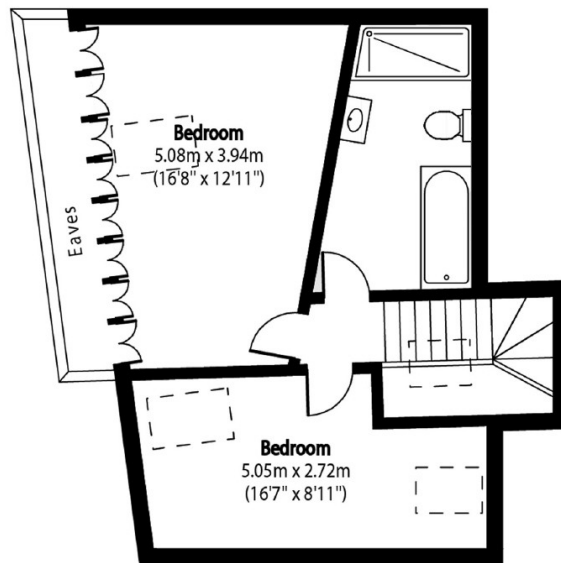
- Gated Development
- Three Bedrooms
- Stepney
- Parking
- Share of Freehold
- Chain Free



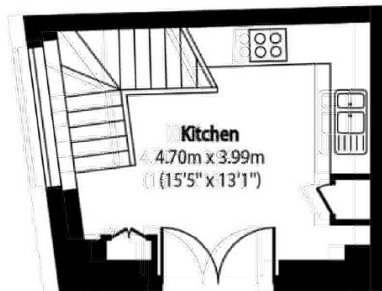
We are pleased to present this large three Bedroom Maisonette positioned in a secure gated development in Stepney within this exclusive mews style development. The property benefits from a decent sized Kitchen with high ceilings and a featured arch window. The open plan Lounge, dining area offers plenty of entertaining space. It additionally benefits from two Bathrooms, parking and lots of storage in the main Bedroom. A lovely family home or a great buy to let investment. Being offered chain free.

Located approximately 0.2 miles from Stepney Green Station offering access to the City of London, making this property perfect for the commuter. Approximately 0.3 miles from Queen Mary University of London. Under a mile to Sainsbury's, Genesis Cinema and nearby Restaurants, Pubs and Cafe's.

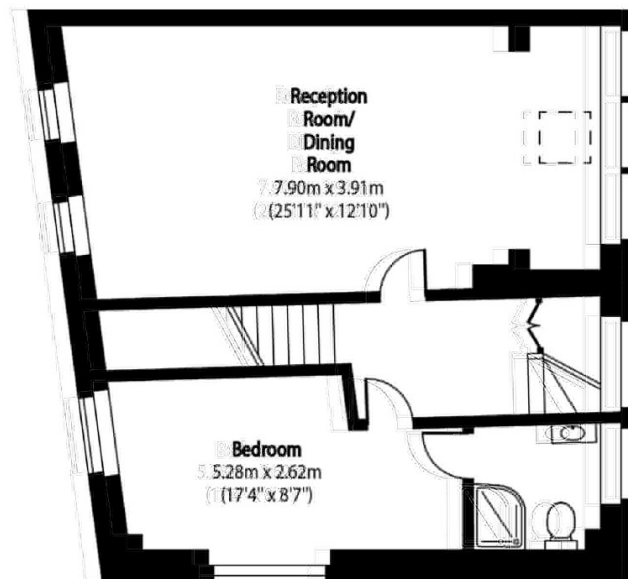




Second Floor



Ground Floor



First Floor

Total area (approx): 120.03 sq m (1292 sq. ft)

(Excluding Eaves)

35A Wapping High Street,
London, E1W 1NR
020 7665 5589
ea2group.com