



Codling Close, E1W

£700,000

 2  1  1  C

- Two Bedrooms
- Split Level Maisonette
- Long Lease
- West Wapping
- Allocated Parking Space
- Chain free

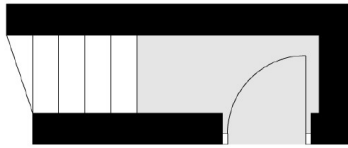


Located in West Wapping, ea2 are pleased to present this split level a Maisonette. The property benefits from two bedrooms, an open plan lounge and kitchen that offers an excellent entertaining space. The seller has advised us that this property was originally constructed as a three bedroom Maisonette but is currently laid out with two bedrooms. Being offered chain free.

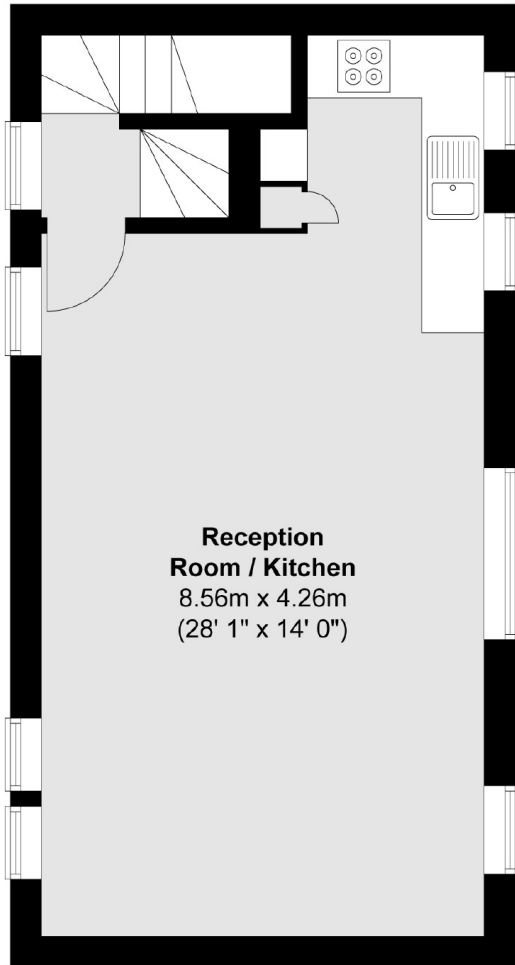
Located 0.8 miles from Tower Hill Underground and 0.5 miles from Wapping Station offering great access to the City and Canary Wharf. Picturesque St Katharine's Docks only 0.5 miles away offers a wide range of restaurants, cafe's, pubs and wine bars.



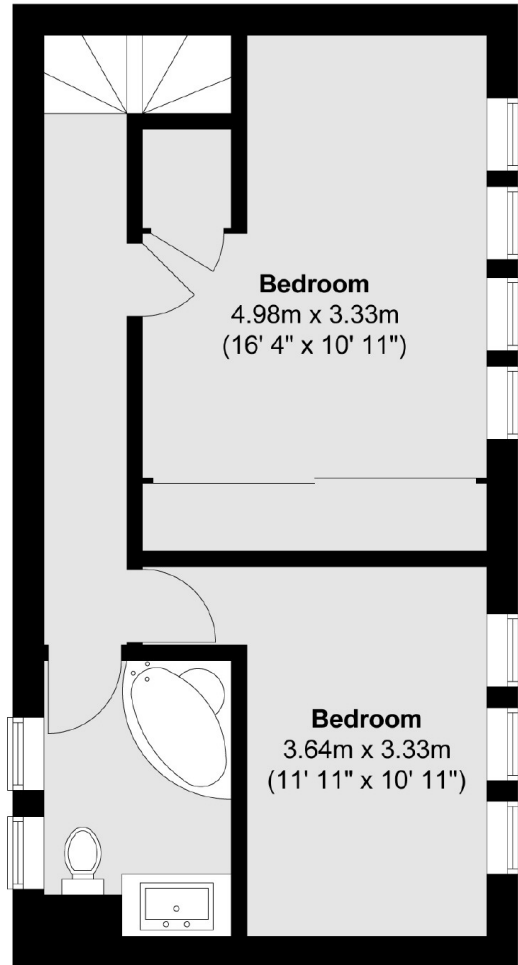
Ground Floor



First Floor



Second Floor



Total area (approx.) : 75.8 sq. m (816 sq. ft)

35A Wapping High Street,
London, E1W 1NR
020 7665 5589
ea2group.com