



Jewel Square, E1W

£380 Per week



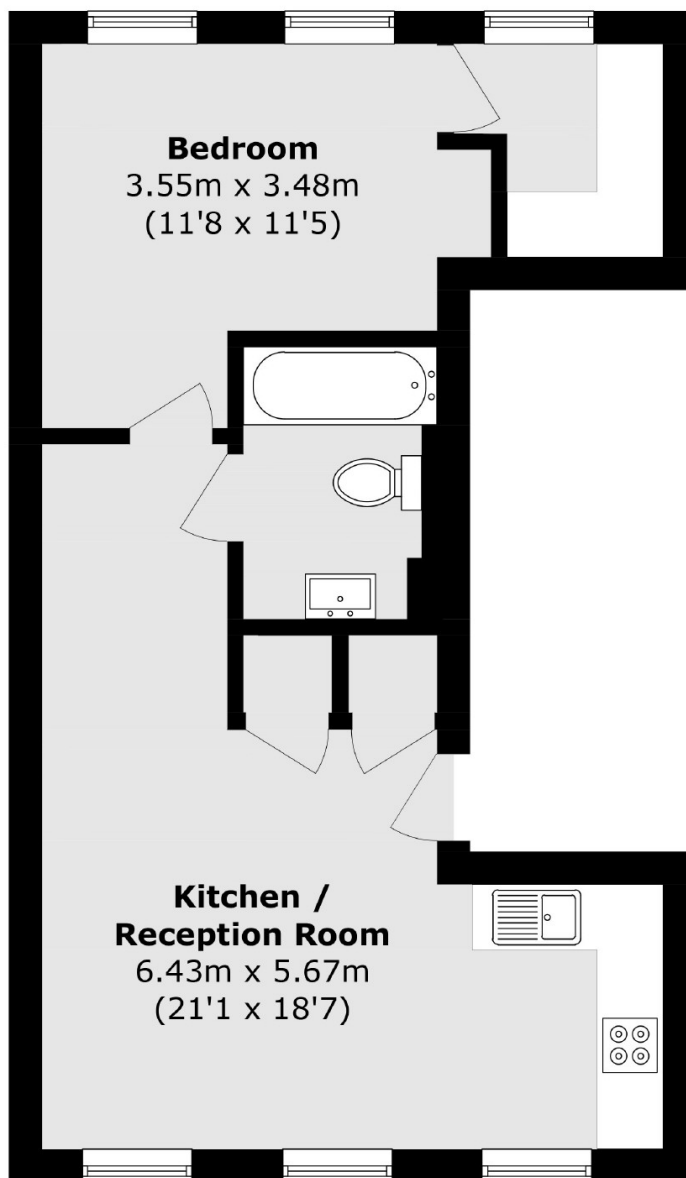
- One Bedroom Apartment
- Under Floor Heating
- 24hr Concierge
- Bike Storage
- Parking Available
- Wapping



One bedroom apartment finished to a high standard with wooden floors, under floor heating and contemporary bathroom and kitchen. The building also offers access to 24-hour concierge and bike storage, and is set around a beautiful communal garden. Parking is available at £25 per week.

Sovereign Court is recently refurbished development. It is ideally located only a short walk from DLR links, Wapping Overground Station, and buses right around the corner providing an easy access to the City, Canary Wharf, London Bridge or Shoreditch.





Total area (approx.): 45.5 sq. m (489.8 sq. ft)

35A Wapping High Street,
London, E1W 1NR
020 7702 3456
ea2group.com