



Vaughan Way, E1W

£1,125,000

 2  1  2  B

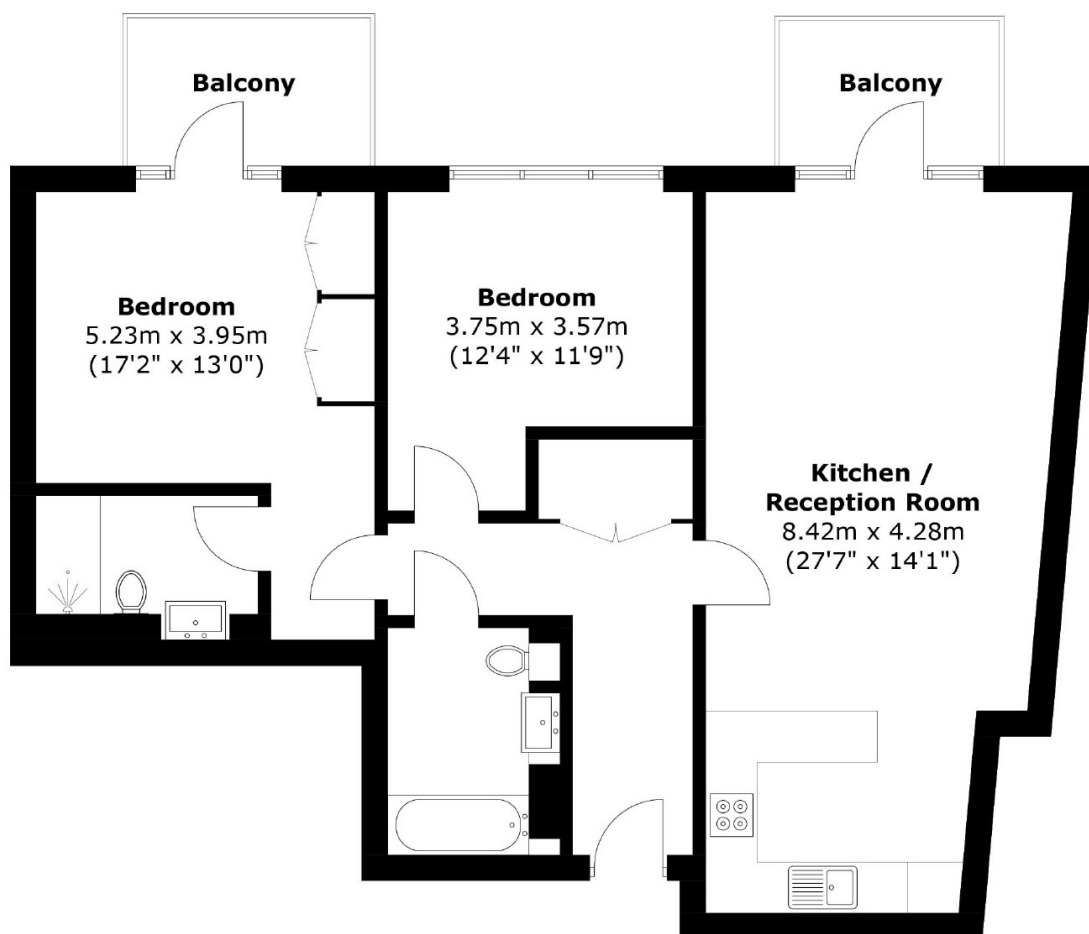
- New residential development
- 2 Bedroom Apartment
- 2 Bathrooms
- Fitted kitchen
- Luxury amenities
- Near to Tower Hill



This stylish two-bedroom, two-bathroom apartment boasts an open-plan reception and kitchen, two balconies, and a fully fitted modern kitchen. London Dock is a new residential development spanning 7.5 acres, featuring landscaped spaces, a central water feature, and a piazza with dining and entertainment options. Residents benefit from private gardens and luxury amenities, including a gym, spa, screening rooms, squash court, virtual golf, and 24-hour concierge services.

The property is ideally positioned just moments from Tower Bridge and St Katharine's Docks. Transport links are excellent, with Tower Hill, Aldgate, and Wapping stations all within walking distance, as well as easy access to the DLR, Overground, and bus routes, providing swift connections to the City, London Bridge, Canary Wharf, and Shoreditch.





Total area: Approx. 82.8 sq. meters (891.2 sq. feet)
Plus Balcony, approx. 9.3 sq. meters (100.1 sq. feet)

35A Wapping High Street,
London, E1W 1NR
020 7665 5589
ea2group.com