



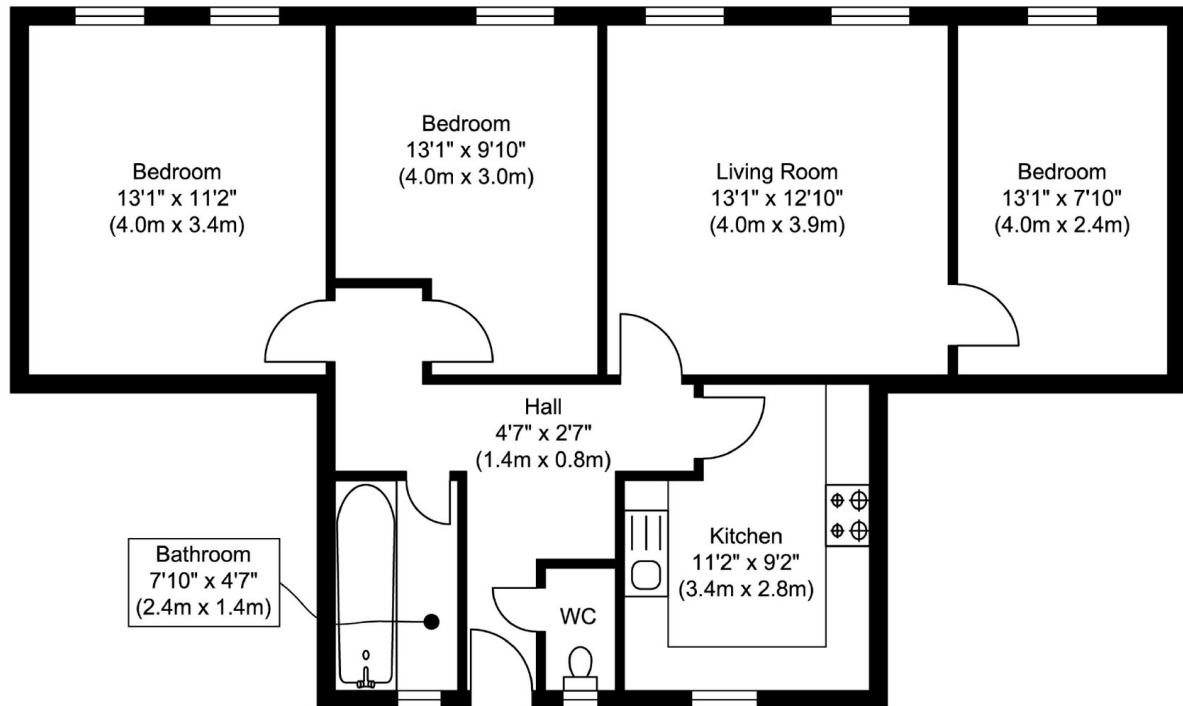
## Green Bank, E1W

£692 Per week

 3
  1
  1
  C

- Three Double Bedroom
- Furnished
- Separate Kitchen

- Second Floor
- Wapping
- Wooden Flooring



Approximate Floor Area  
796.09 sq. ft.  
(73.96 sq. m)

## Chancellor House, Wapping, E1W

Whilst every attempt has been made to ensure the accuracy of the floor plan contained here, measurements of doors, windows, rooms and any other items are approximate and no responsibility is taken for any error, omission, or mis-statement. This plan is for illustrative purposes only and should be used as such by any prospective purchaser. The services, systems and appliances shown have not been tested and no guarantee as to their operability or efficiency can be given.  
produced on behalf of Ea2

35A Wapping High Street,  
London, E1W 1NR  
020 7702 3456  
ea2group.com