



Thomas More Street, E1W

£800,000

 2  1  2  C

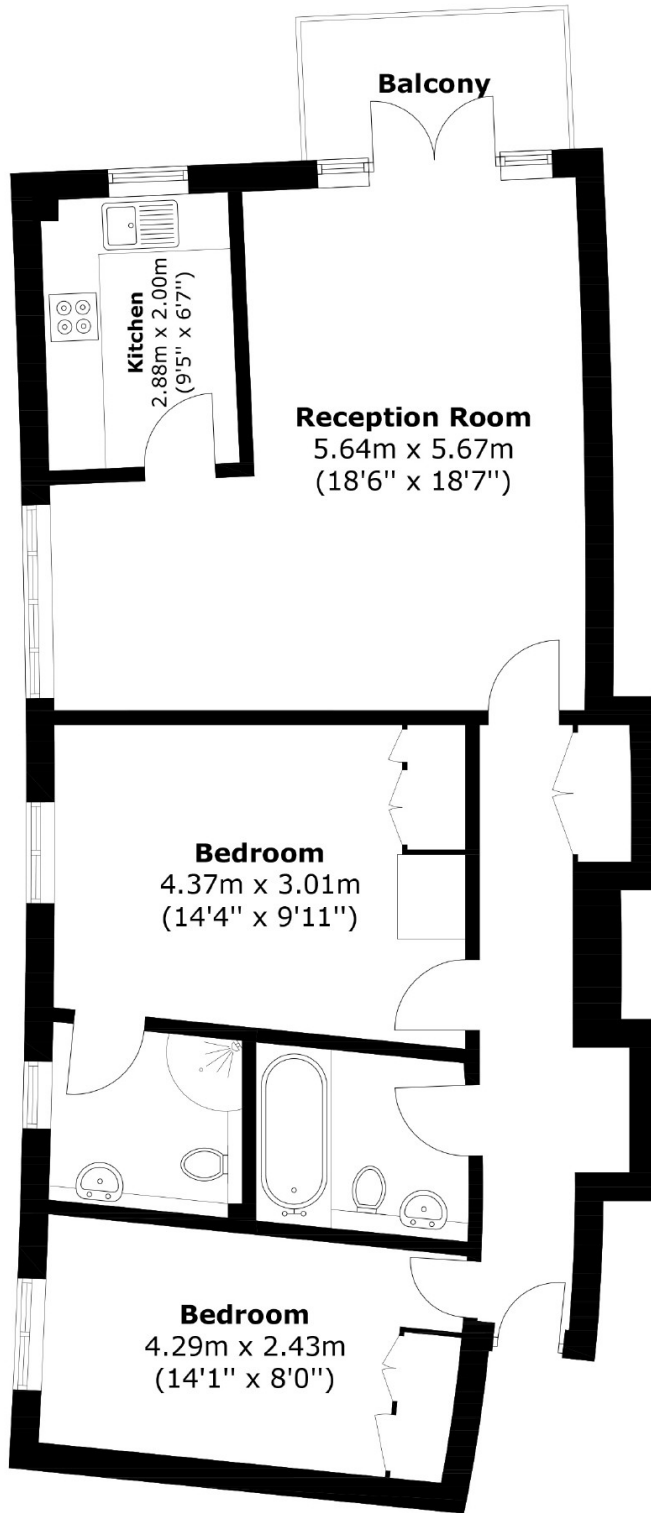
- Direct Water Views
- Modern Apartment
- 2 Bedroom
- 2 Bathroom
- Reception
- Balcony



Offers in excess of £800,000. This exquisite two-bedroom apartment, located in a secure building in West Wapping, offers stunning direct views of Hermitage Basin. The spacious layout features a bright reception room with access to a private balcony, a fully fitted kitchen, two generous double bedrooms, and two bathrooms. Hermitage Waterside provides exceptional amenities, including secure underground parking, bike storage, lift access, and porter services.

The property is ideally situated, just moments from St Katharine's Docks, with an array of pubs, restaurants, bars, and cafes nearby. Tower Bridge, Aldgate stations, and The City are all within walking distance, while local bus routes offer easy access to Canary Wharf, London Bridge, and Shoreditch. Offered chain-free, and with Waitrose supermarket just a short walk away, this property combines convenience, luxury, and a prime location near the historic St Katharine's Docks.





Total area: Approx. 76.2 sq. meters (820.2 sq. feet)
Plus balcony, approx. 4.1 sq. meters (44.1 sq. feet)

35A Wapping High Street,
London, E1W 1NR
020 7665 5589
ea2group.com