



Prospect Place, E1W

£685,000

 2  1  2  D

- House in Prospect Place
- Two Bedrooms
- Two Bathrooms

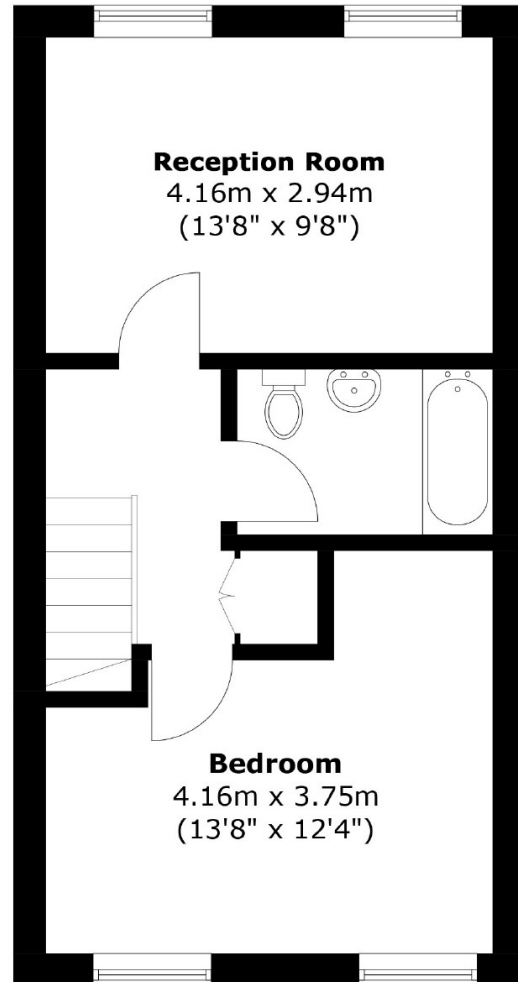
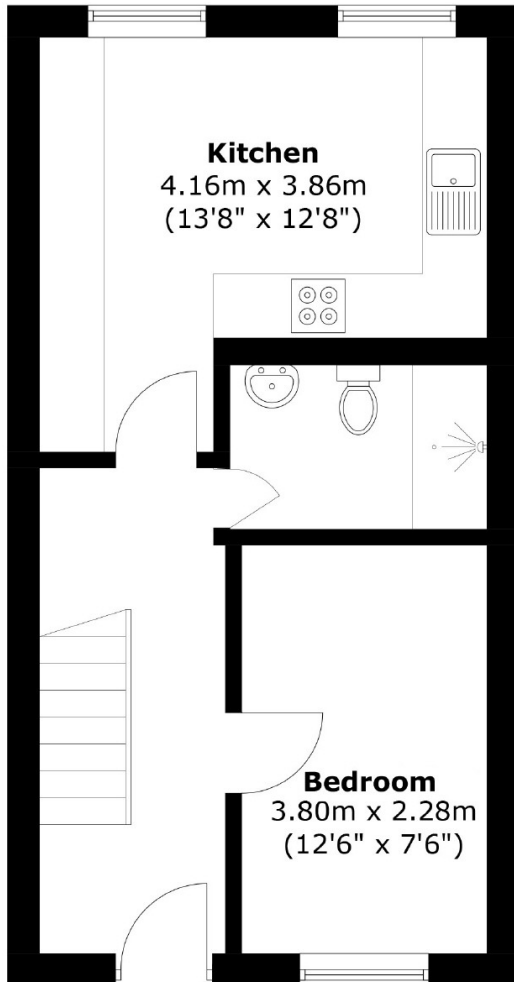
- Modern Kitchen
- Allocated Parking Space
- Overlooking communal Garden



Ea2 are pleased to offer this well presented two bedroom house overlooking the picturesque communal garden within this gated development. The property benefits from a modern kitchen and two bathrooms. Allocated parking space.

Ideally located in Prospect Place on Wapping Wall, 0.2 miles from Wapping Station and Wapping Lane that offers a range of convenience stores including a local butcher and Sainsbury's. Great for commuting to the City or Canary Wharf.





Total area: Approx. 71.1 sq. meters (766.3 sq. feet)

35A Wapping High Street,
London, E1W 1NR
020 7665 5589
ea2group.com