



Wapping High Street, E1W

£1,250,000

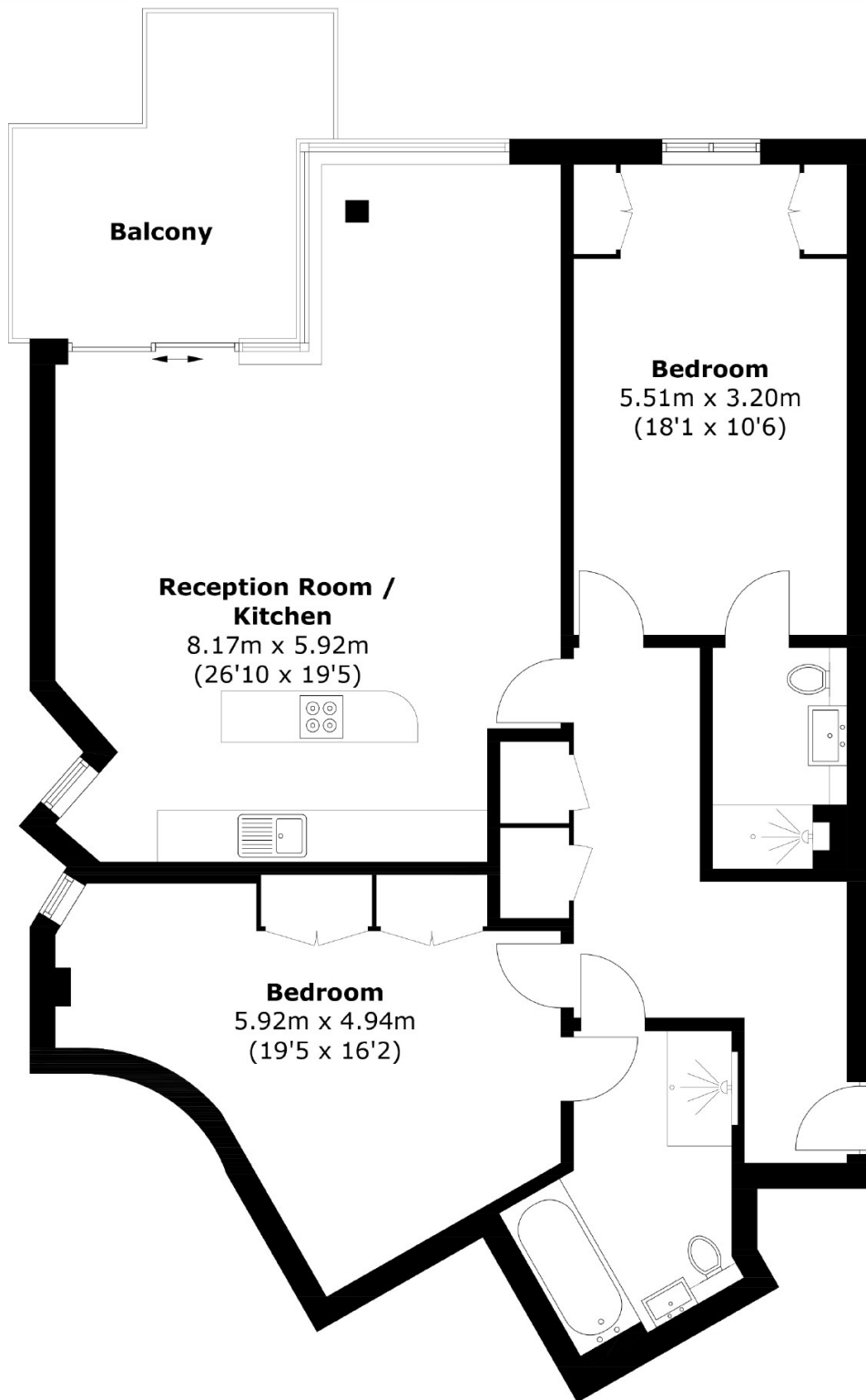
 2  1  2  B

- Stunning River Views
- 2 Bedrooms
- 2 Bathrooms
- Fitted Kitchen
- Concierge Service
- Communal Roof Terrace



This exquisite 2-bedroom, 2-bathroom apartment located on the 3rd floor of a newly developed, secure riverside building with porter services. The apartment boasts stunning views over the River Thames and features a spacious open-plan reception room and kitchen equipped with high-quality integrated SMEG appliances. The property comprises two double bedrooms, each with fitted wardrobes, and two contemporary en-suite bathrooms. Additionally, the apartment includes a private terrace offering spectacular water views towards Canary Wharf. Marc Brunel House further benefits from a concierge service, video entry phone security, bike storage, and a communal roof terrace with beautifully landscaped gardens, providing 360-degree views across London. The development is named after Marc Isambard Brunel (1769-1849), a French-born engineer who made significant contributions to engineering in the UK. Notably, he designed the Thames Tunnel, the world's first underwater tunnel, connecting Rotherhithe and Wapping. This naming likely honors his association with the local area and his engineering legacy. Marc Brunel House benefits from its proximity to Wapping Station, providing convenient transport links to central London. The area is steeped in history and character, situated along the north side of the River Thames, and is home to St Katharine Docks, central London's only marina, boasting an array of bars and restaurants. No Chain.





Total area: Approx. 105.8 sq. meters (1138.8 sq. feet)
Balcony area: Approx. 11.2 sq. meters (120.5 sq. feet)

35A Wapping High Street,
London, E1W 1NR
020 7665 5589
ea2group.com